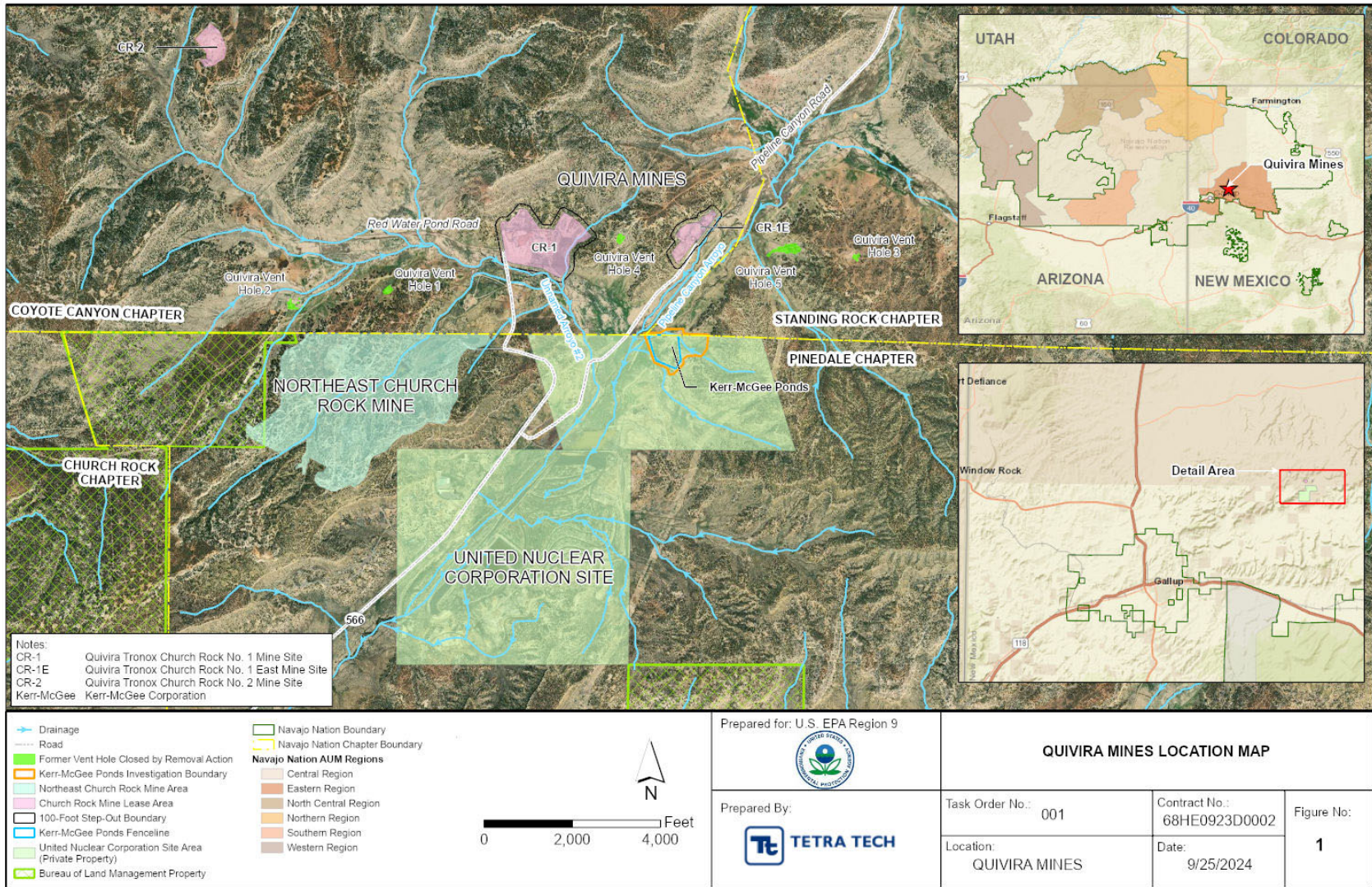
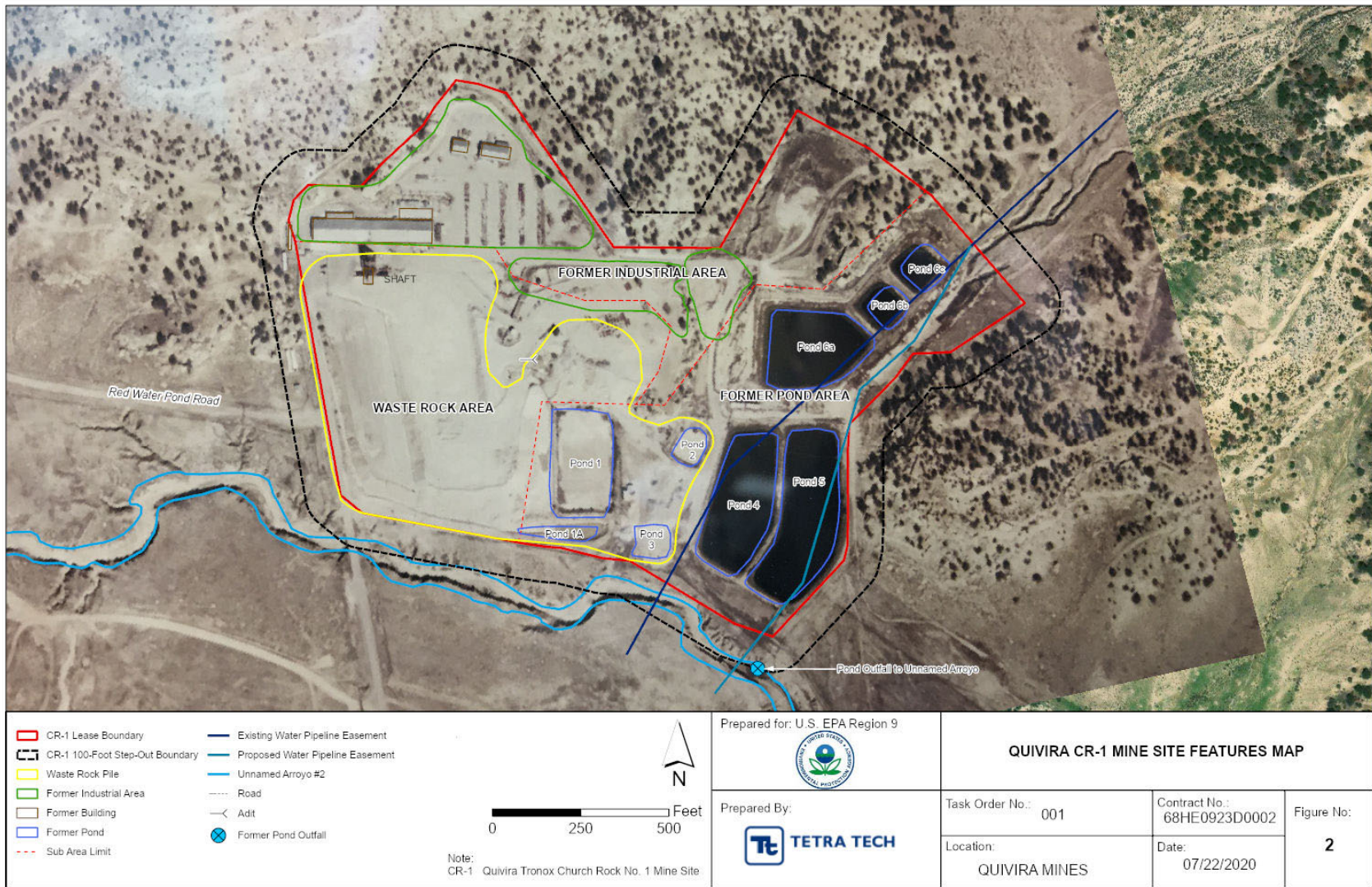


**Attachment II**  
**Site Location, Feature, and Removal Extent Maps**

















<p> <span style="color: grey;">---</span> Road  <span style="color: blue;">—</span> Arroyo  <span style="border: 1px solid blue; display: inline-block; width: 10px; height: 10px;"></span> Former Pond  <span style="border: 2px solid orange; display: inline-block; width: 10px; height: 10px;"></span> Kerr-McGee Ponds Investigation Boundary  <span style="background-color: #cccccc; border: 1px solid black; display: inline-block; width: 10px; height: 10px;"></span> Former Stockpile Area  <span style="background-color: #ffff00; border: 1px solid black; display: inline-block; width: 10px; height: 10px;"></span> Former Equipment Storage Area         </p>		<p> <span style="border: 1px solid cyan; display: inline-block; width: 10px; height: 10px;"></span> Kerr-McGee Ponds Fenceline  <span style="border: 1px dashed green; display: inline-block; width: 10px; height: 10px;"></span> United Nuclear Corporation Site Boundary  <span style="border: 1px solid orange; display: inline-block; width: 10px; height: 10px;"></span> Navajo Nation Chapter Boundary         </p>	
<p>           Note:            Kerr-McGee    Kerr-McGee Corporation         </p>		<p>Prepared for: U.S. EPA Region 9</p> 	
<p>Prepared By:</p> 		<p>Task Order No.: 001</p>	<p>Contract No.: 68HE0923D0002</p>
		<p>Location: QUIVIRA MINES</p>	<p>Date: 9/25/2024</p>
			<p>Figure No: 4</p>



