



Environmental Justice Community Engagement Session

Region 5

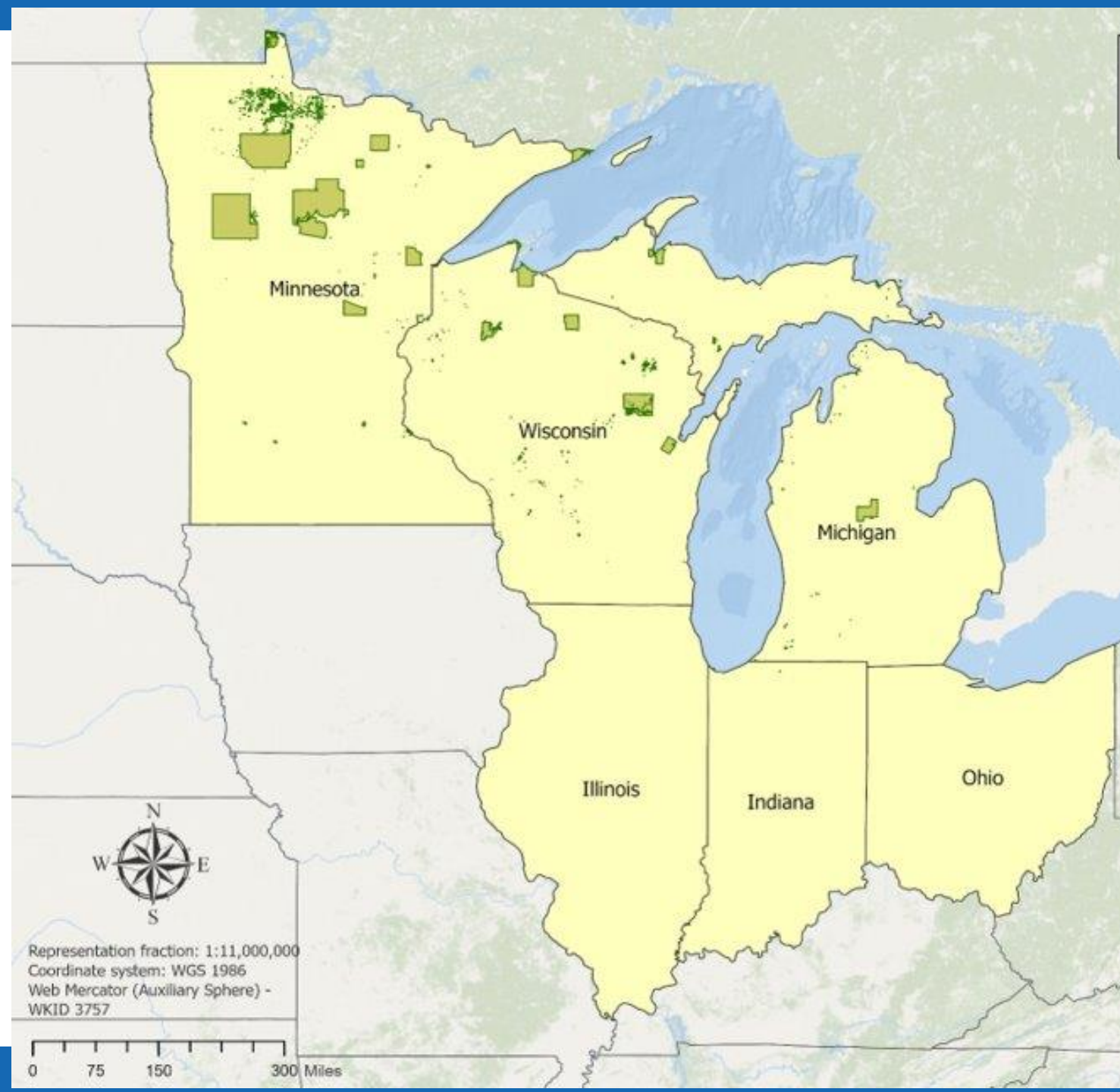
Serving Illinois, Indiana,
Michigan, Minnesota,
Ohio, Wisconsin, and
36 Federally
Recognized Tribal
Nations

November 18, 2024 • 6-7:30 pm, CST

Welcome

Introduce yourself in the chat:

- Where are you from?
- What's your name?



Housekeeping

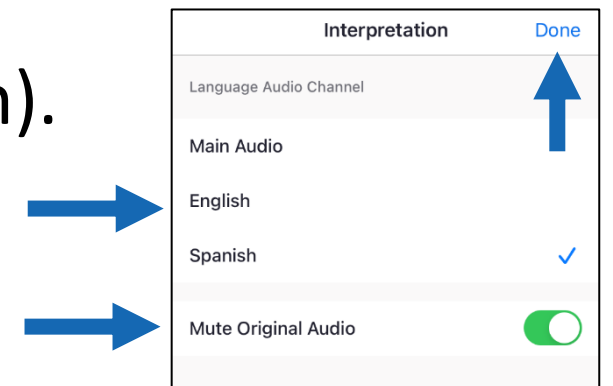
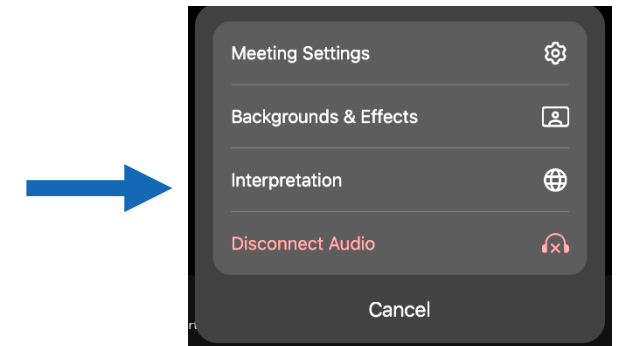
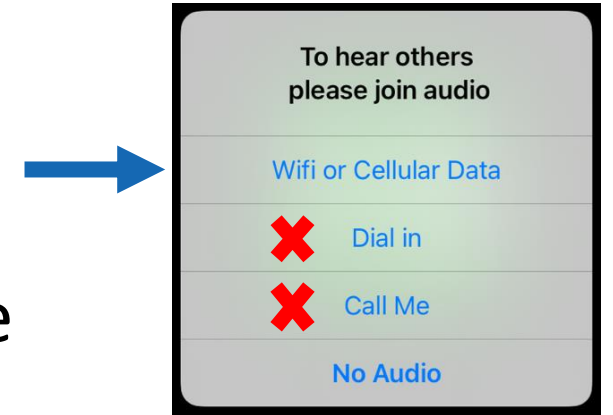
- Welcome! Please select your preferred language by clicking on the interpretation icon on at the bottom of your screen.
- ¡Bienvenido! Si necesita interpretación, seleccione el idioma que prefiera haciendo clic en el botón de interpretación situado en la parte inferior de la pantalla.



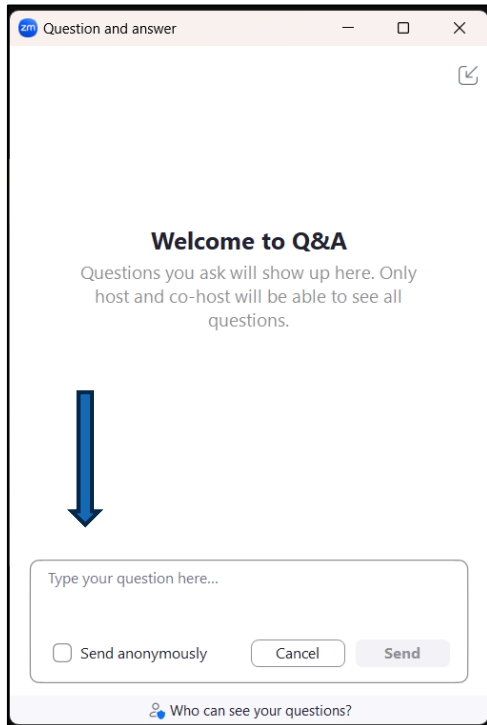
- Audio is available through computer speakers or telephone.
- Toll-free call-in number is: 833-568-8864.
- Meeting ID: 161 137 0453
- Turn on **closed captioning** by selecting the “CC” icon.

Language Support in the Zoom Mobile App

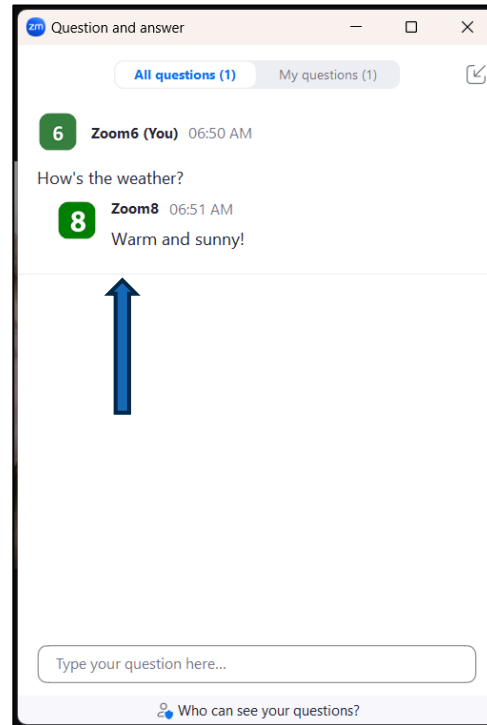
- To use interpretation services, you must select the **Wifi or Cellular Data** option when you join. You cannot use “Dial in” or “Call me.”
- Press the three dots above **More** in the control panel.
- Press the **Interpretation** icon.
- Select your preferred language (Español or English).
- Tap the toggle to **Mute Original Audio**.
- Click **Done**.



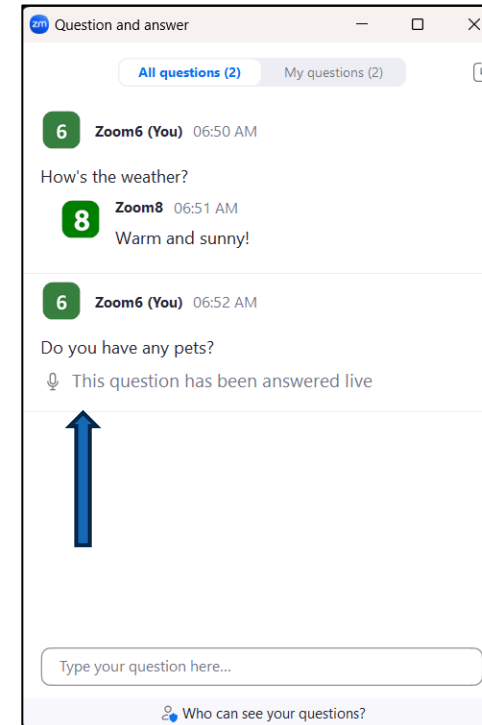
Please ask questions through the Q&A box



Type your question into the Q&A box



Questions will be answered with a written response

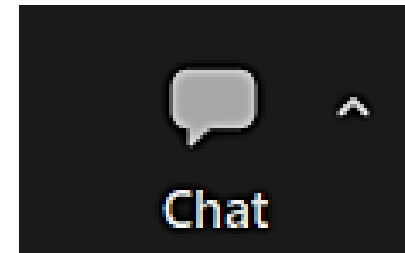


Or a verbal response

You can view your questions or all questions

Technical Difficulties?

- Please type technical difficulties in the **Chat** box, and we will troubleshoot issues with you.
- Or you can email leah.tevis@erg.com



Questions on presentation,
technical difficulties

Disclaimer

Please note that by participating in today's online event, you acknowledge and consent that your name, video, image, or phone number may be visible to others in the live online meeting. Any material you type into the chat will also be visible to others.

Today's event is not being recorded.

Agenda



- 1. Welcome - Jesse Casiano**
- 2. Housekeeping**
- 3. Regional Administrator Debra Shore**
- 4. Division Director Alan Walts**
- 5. EJCHERD Offerings**
- 6. EJ Academy Alumni Association President Gayle Covington Fowler**
- 7. Q&A**
- 8. Feedback Survey**



Regional Administrator

Debra Shore



Regional Priorities

Alan Walts

ENVIRONMENTAL & CLIMATE JUSTICE COMMUNITIES GRANT PROGRAM



Assessment

- Thriving Community Technical Assistance Centers (TCTACs)
- Assessment Grants (Thriving Communities Grantmakers)

Planning & Project Development

- Planning Grants (Grantmakers)
- Project Development Grants (Grantmakers)
- Technical Assistance

Pilots and Partnerships

- EJ Collaborative Problem-Solving Grants (EJ-CPS)
- EJ Government to Government Grants (EJ-G2G)

Implementation

- E&CJ Community Change Grants
- Evaluation and Reporting Technical Assistance

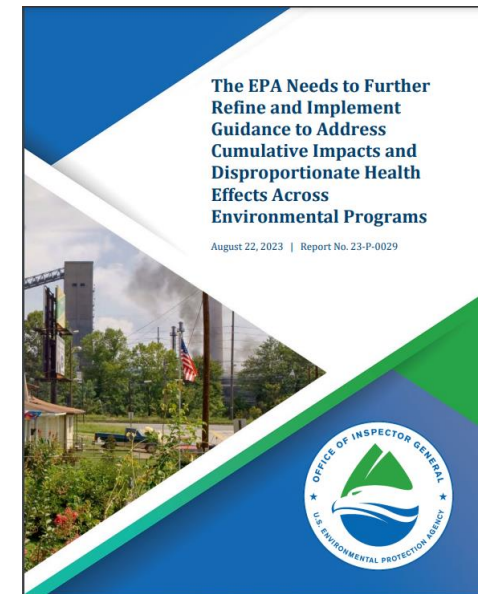
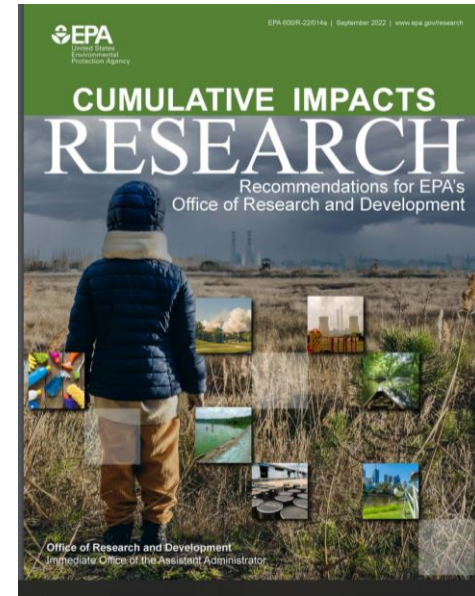
Addressing Cumulative Impacts

“Cumulative Impacts”: the totality of exposures to combinations of chemical and nonchemical stressors and their effects on health, well-being, and quality of life outcomes.

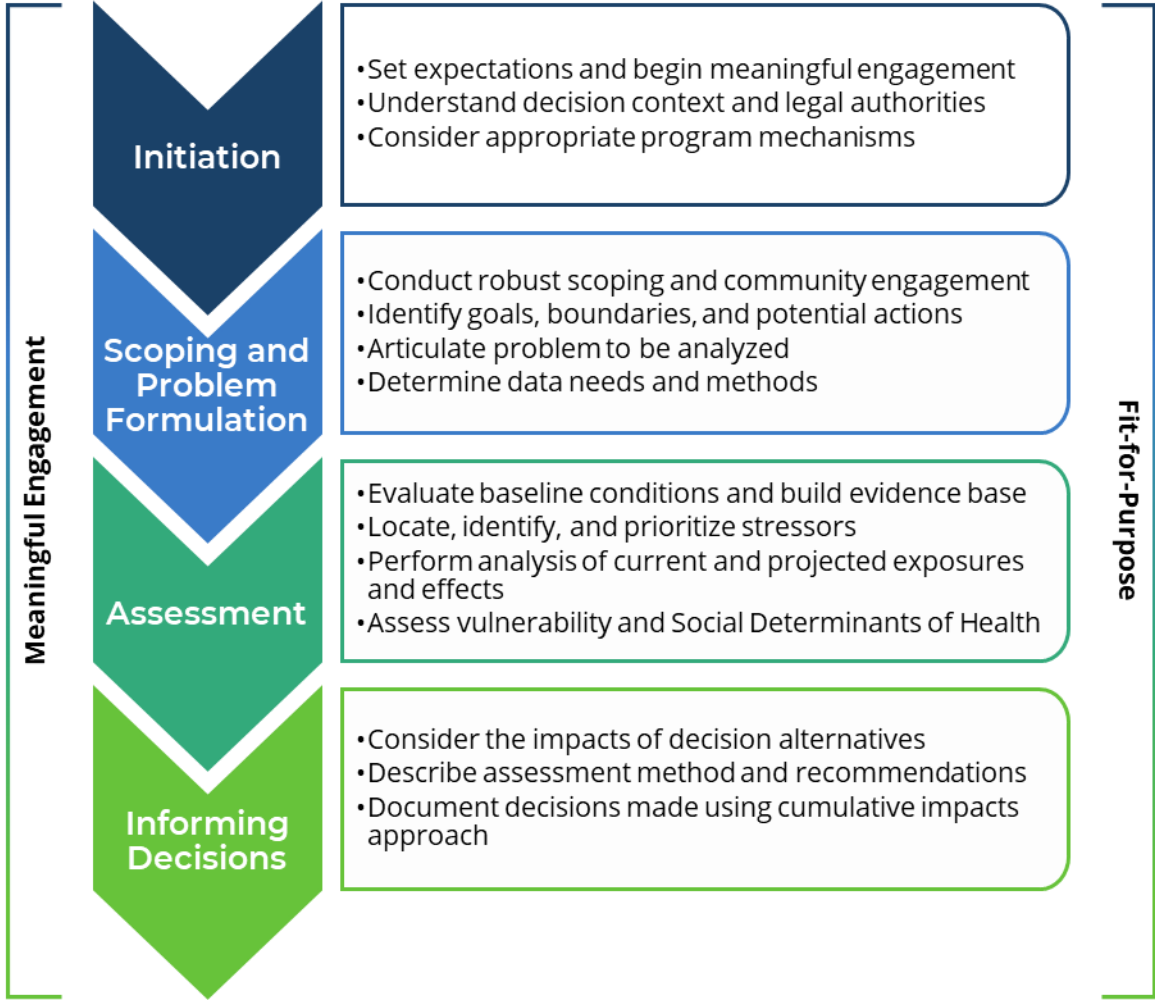
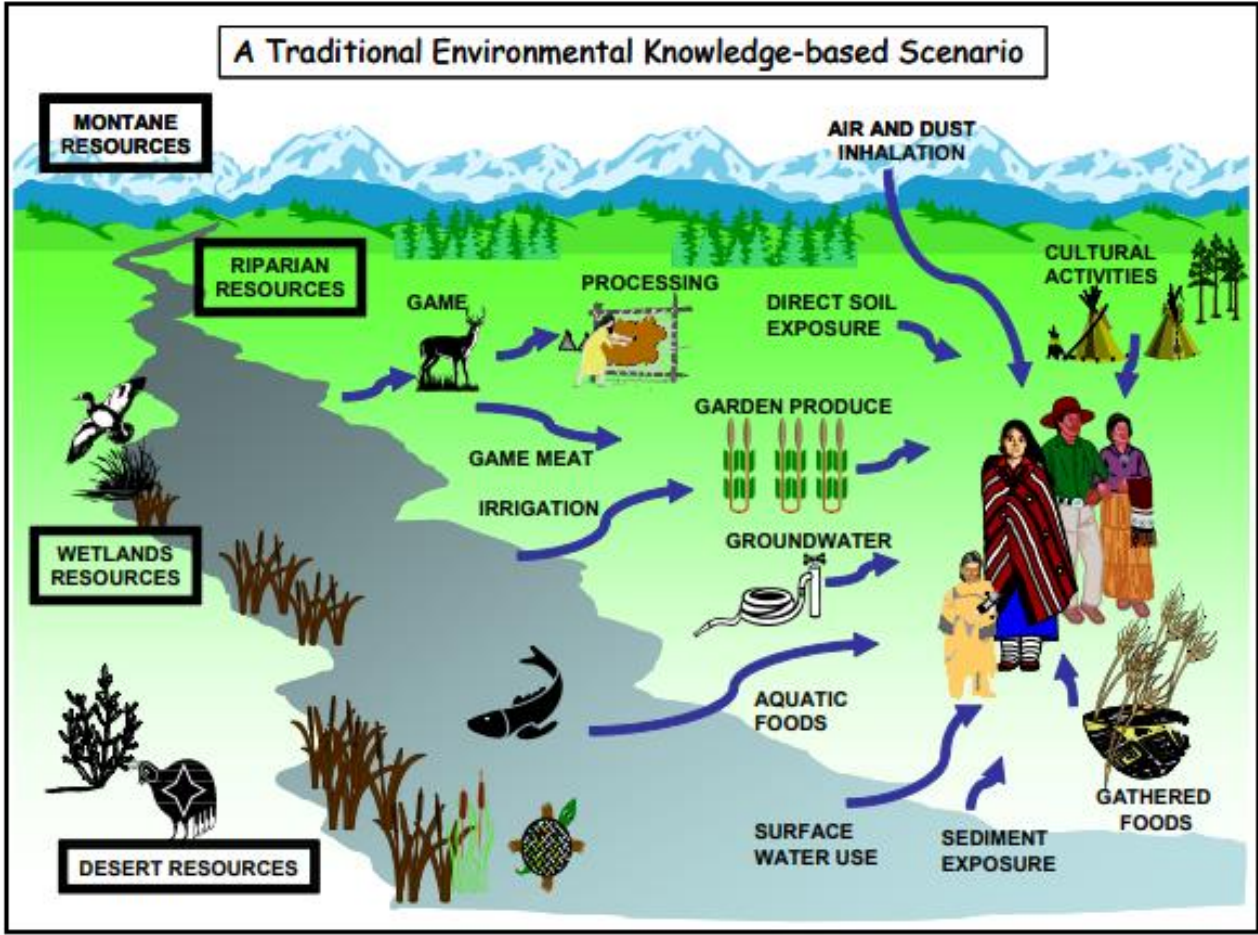
“Cumulative Impact Assessment”: a process of evaluating both quantitative and qualitative data representing cumulative impacts to inform a decision.

EPA OIG’s August 2023 report re: CI. EPA concurred with the recommendations to:

- Develop and implement policies and guidance to increase and **improve coordination between EPA programs** to assess and **address cumulative impacts** and disproportionate health effects.
- Develop and **implement performance measures** to monitor progress in identifying and **addressing cumulative impacts** and disproportionate health effects across EPA programs.



Cumulative Impacts Assessment



Addressing cumulative impacts is key to EPA achieving its mission of protecting human health and the environment

COMMUNITY ACTION ROADMAP

The Community Action Roadmap (Roadmap) is a systematic approach to **assess** and **address** cumulative impacts.

Goals:

- Identify the needs and concerns of overburdened communities through collaborative engagement with the community, community-based organizations, State and Local governments.
- Identify actions that will address cumulative and disproportionate impacts while building sustainable capacity to advance environmental justice and equity.



Links:

[Standard Operating Procedure for the Community Action Roadmap \(pdf\)](#) (2.42 MB)

[Region 5 Community Action Roadmap \(pdf\)](#) (583.79 KB)



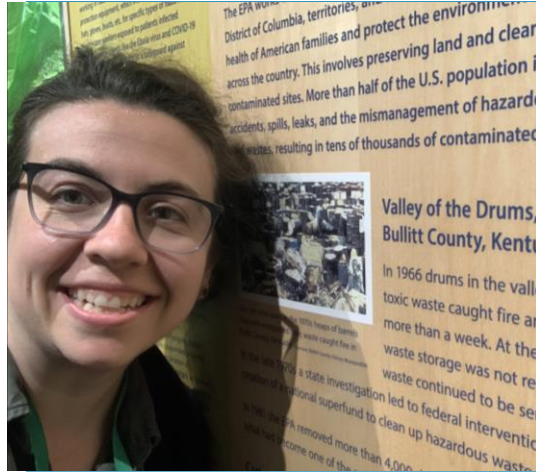
Environmental Justice, Children's Health, and Environmental Review (EJCHERD) Offerings

Today's Presenters



Megan Gavin

Megan Gavin is the environmental education coordinator for EPA region 5. She administers and manages the regional environmental education grants competition and coordinates the regional competition for the President's Environmental Youth Awards and the President's Innovation Award for Environmental Educators. She also manages multimillion dollar environmental justice grants. Megan lives in Chicago and enjoys reading, doing puzzles, and daydreaming about her next foreign vacation.



Elizabeth Poole

Elizabeth is the Children's Environmental Health Coordinator for EPA Region 5 – helping people create healthier and safer spaces for children to live, learn, and play. She has an MS in environmental health science from Johns Hopkins, and an undergraduate degree in geology from the University of Kentucky. Elizabeth lives in Chicago with her husband, two kids, and dog, and enjoys reading, being outside, and talking about cryptids.



Krystle McClain

Krystle McClain, P.E. serves the Region's National Environmental Policy Act (NEPA) Manager leading a team of intelligent and highly motivated staff in implementing the region's responsibilities for environmental review under the NEPA and Clean Air Act Section 309. Krystle has a Bachelors of Science in Chemical Engineering and a Masters of Environmental Engineering from the University of Maryland at College Park. On Sundays you can find her rooting for her favorite team: the Washington Commanders.

Today's Presenters



Gabby Plotkin

Gabby Plotkin is a Project Officer in EPA Region 5. She has a Bachelor of Arts in history with a focus on environmental policy and civic engagement from Northwestern University. Specializing in community engagement and grants, Gabby is passionate about improving access to federal grants and resources to communities. In her free time, Gabby enjoys biking, hiking, reading, and skiing.



Ravi Rao

Ravishankar (Ravi) Rao, MPH, MPA, is a Project Officer and an Epidemiologist at the EPA's EJ Office. Ravi earned a BS in Biology from Tuskegee University, master's degree in Public Health from University of Alabama at Birmingham, and a master's degree in Healthcare Administration from Auburn University at Montgomery. Ravi has considerable knowledge of Geographical Information System (GIS), computer/data scientist skills, and EJSCREEN tool.



Environmental Education

Megan Gavin



Environmental Education

- Mission
 - To encourage, support and promote environmental education programming to increase environmental literacy and stewardship to promote and protect human health and the environment.
 - [epa.gov/education](https://www.epa.gov/education)

Environmental Education at EPA

- Grants
- Presidential Innovation Award for Environmental Educators
 - Teacher awardees and their local education agency receive up to \$2,500
- President's Environmental Youth Awards
 - 2 categories:
 - K-5
 - 6-12 grades
- Resources





Children's Environmental Health

Elizabeth Poole

Children's Environmental Health / Healthy Schools

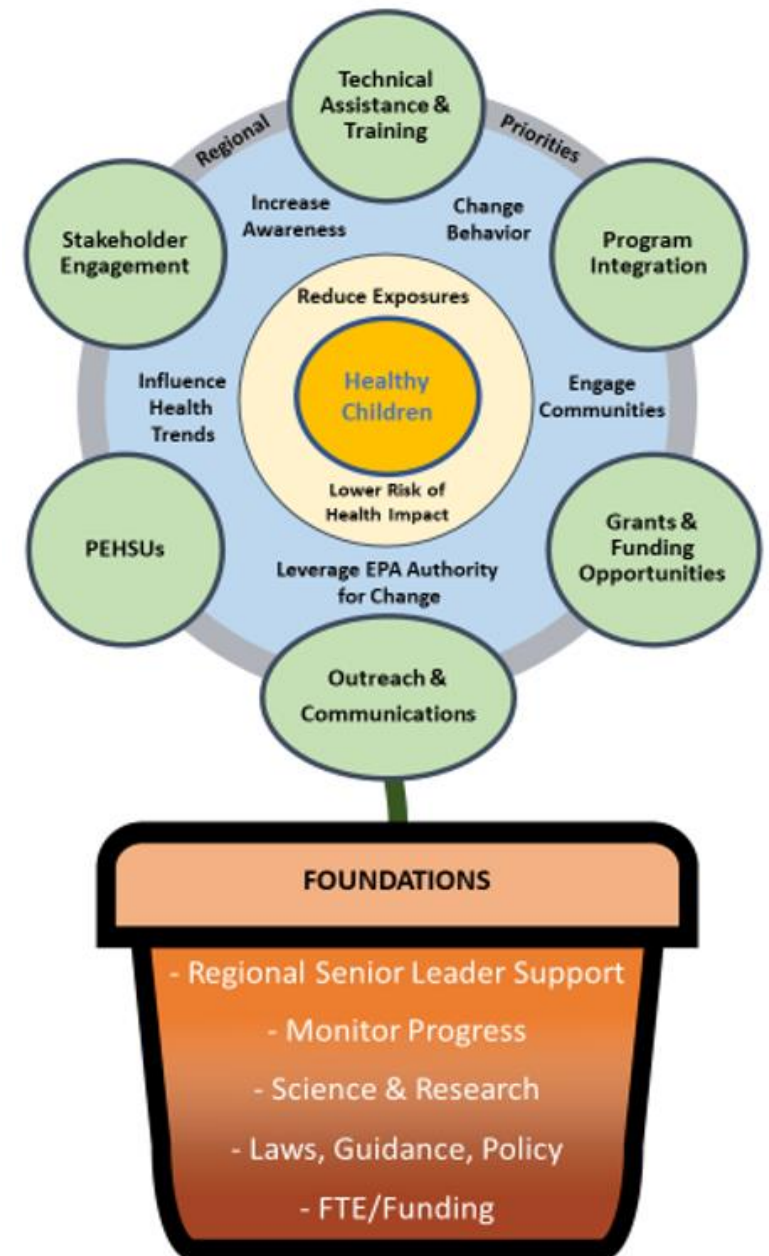
Protect children where they live, learn, and play

<https://www.epa.gov/children>

> [Grants and Technical Assistance](#)

<https://www.epa.gov/schools>

EPA Regional Children's Health Program Framework





Children's Environmental Health / Healthy Schools.

Pediatric Environmental Health Specialty Unit (PEHSU)

- Consultation
- Education/Outreach
- Referral/Liaison

Region 5: Great Lakes Center for Children's Environmental Health

- (866) 967-7337 toll free or (312) 864-5526
- ChildrensEnviro@uic.edu



NEPA

Krystle McClain

National Environmental Policy Act

- Signed into law on January 1, 1970
 - Requires federal agencies to assess the environmental effects of their proposed actions prior to making a decision.
- Council on Environmental Quality oversees NEPA implementation
 - 40 CFR Parts 1500-1508
 - Last update effective July 1, 2024
- Environmental Protection Agency's Role
 - Authority to review all Environmental Impact Statements (Clean Air Act Section 309)
 - Comply with NEPA for EPA actions (42 CFR Part 6)

National Environmental Policy Act.

- Three Levels of NEPA Review
 - Categorical Exclusion
 - Environmental Assessment
 - Environmental Impact Statement
- Evaluated Resources

Biological resources	Water resources	Socioeconomics	Air quality	Energy	Land use
Geological resources	Cultural/Visual/Tribal/Indigenous resources	Environmental Justice	Climate	Noise	Transportation

- Public Involvement
 - Scoping
 - Draft NEPA documents review
- Contact: R5NEPA@epa.gov



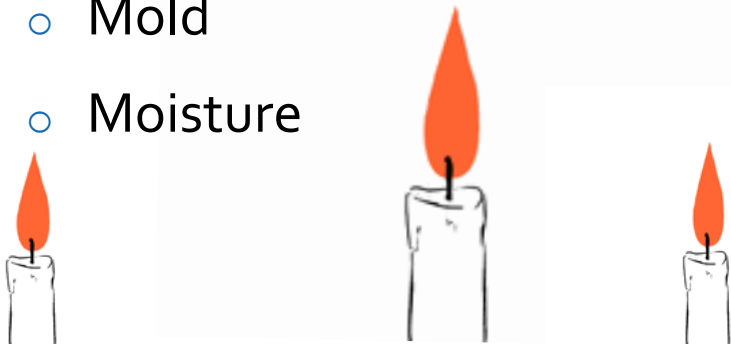
Healthy Homes

Gabby Plotkin

How to Keep a Healthy Home

- **Poor Indoor Air Quality**

- Asthma triggers
- Second-hand smoke
- Volatile Organic Compounds (VOCs)
 - Cleaners
 - Fragrances
 - Off-gassing
- Mold
- Moisture



- **Pests**

- Weeds, cockroaches and rodents, as well as the chemicals we use to control them

- **Pesticides**

- **Radon**

- **Mercury**





RUN YOUR WATER



KEEP HOMES CLEAN
& DUST FREE



EAT A DIET HIGH IN IRON,
CALCIUM & VITAMIN C



WASH HANDS



PLAY IN GRASS



HIRE CERTIFIED LEAD
PROFESSIONALS



SHOWER
& CHANGE



WASH TOYS,
PACIFIERS & BOTTLES

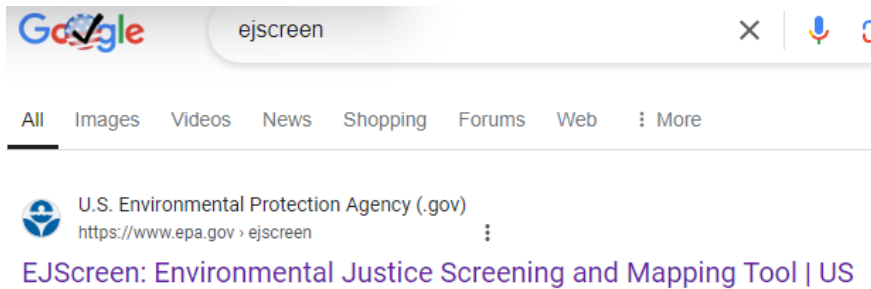


Ravi Rao

EJScreen

EJ Screen

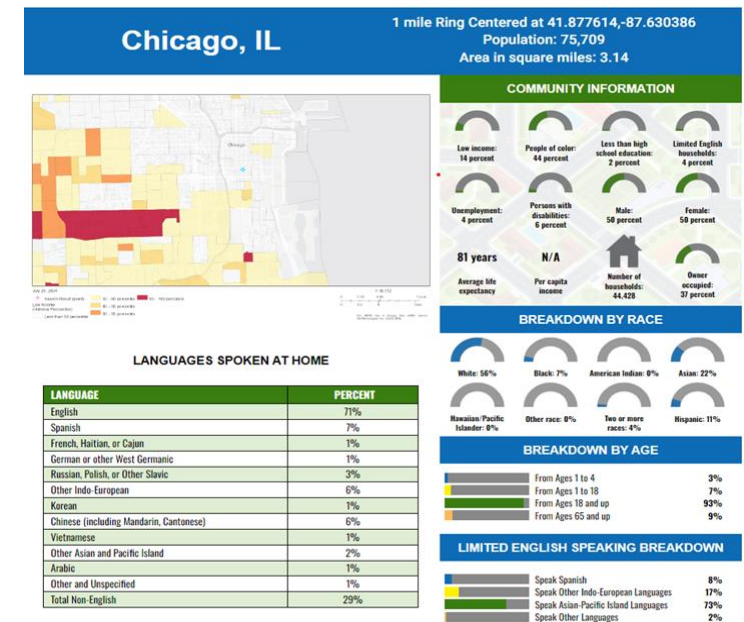
- EJScreen is the EPA’s environmental justice (EJ) screening and mapping tool that utilizes nationally-consistent data to highlight vulnerable communities overburdened by pollution.
- The tool provides summarized and detailed information at high resolution for both socioeconomic and environmental indicators.
- Easy to use, web-based, colorful maps, reports & charts.
- Annually up-dated national data, high resolution data.



Launch the Tool



- [Launch the EJScreen Tool](#)



EJ Screen.

- Generates Socioeconomic Indexes
 - (Demographic Indexes (2) & Supplemental Demographic Indexes (6))
 - People of color, Low-Income, Unemployment Rate, Limited English-speaking, Less than High School Education, Under age 5, Over age 64.
- Environmental Indicators:
 - Particulate matters, Ozone, Nitrogen Dioxide, Diesel Particulate matter, Toxic Release to Air, Traffic Proximity, Lead paint, Superfund proximity, RMP facility, Hazardous waste, Underground storage, Wastewater discharge, Drinking Water non-compliance
- Generates EJ Index & Supplemental Indexes for 13 Environmental indicators.



EJ Academy Alumni Association

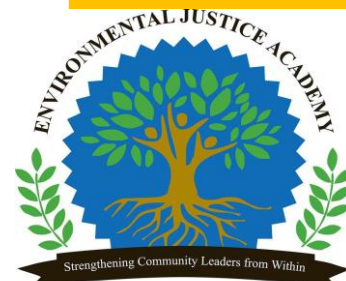
**Gayle Covington
Fowler**

2021-22 EPA Region 5 Inaugural EJA Cohort



NATIONAL EJA ALUMNI ASSOCIATION

Gayle Covington Fowler - gcfowler@pfacellc.com



Two Years since Graduation

Region 5 Inaugural Cohort Alumni Fellows

- Alumni Appointed to local city commission
- Elected to city council
- Successful grant writing, \$ millions of grant dollars awarded
- Businesses started
- Community & government program collaborations
- EJ Community Projects
- Environmental Awards
- National EJ Alumni Association Board Members
- Regional Cohort Training

NATIONAL EJA ALUMNI ASSOCIATION

Gayle Covington Fowler - gcfowler@pfaceilc.com

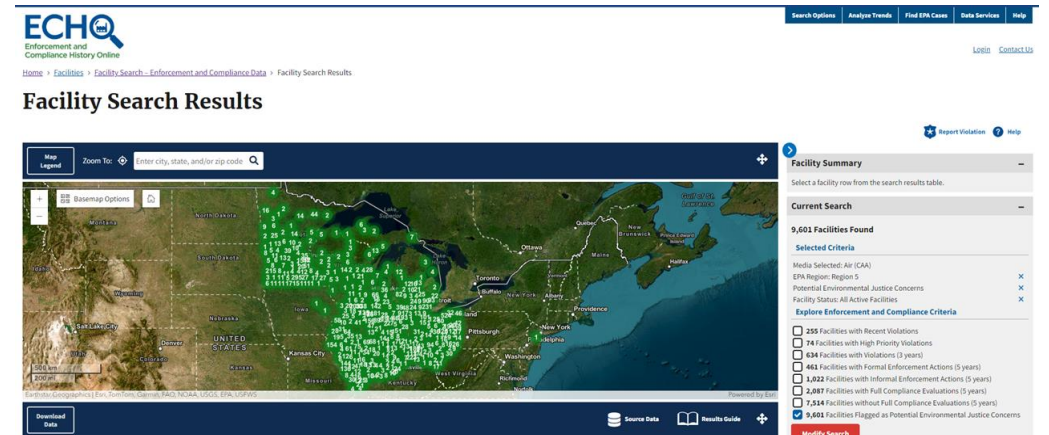


Q&A

Michelle Caldwell

Permitting Process

- Enforcement Orders vary in size and scope according to the assessed non-compliance.
- EPA cannot comment on status of individual Orders and is prohibited from communicating with outside parties.
- The Enforcement Compliance History Online database (ECHO) is a useful tool to view facility compliance.
- Air permitting is delegated to the individual states in Region 5, with EPA oversight.



Stormwater and Flooding Resources

What support can EPA provide to flood-prone communities?

- Flooding can contribute to or overwhelm sewer systems, which can impact waterways.
- EPA regulates Combined Sewer Overflows (CSOs) and Sanitary Sewer Overflows (SSOs).
- However, the main authority for flooding assistance and resources lies with:
 - Individual States
 - Local Government
 - Federal Emergency Management Agency (FEMA)
 - United States Army Corps of Engineers (USACE)

PFAS

- Per- and Polyfluoroalkyl Substances are widely used, long-lasting chemicals that break down very slowly over time.
- PFAS are found in water, air, fish and soil at locations across the nation and globally.
- Studies have shown PFAS exposure may be linked to harmful health impacts.
- EPA recently set drinking water regulations for 6 PFAS compounds.



Q&A

Yulissa Aguilar

Michigan Resources

- [EPA in Michigan website.](#)
- [EPA Flint FAQ webpage](#)

Lead Resources

- <https://www.epa.gov/ground-water-and-drinking-water/lead-and-copper-rule-improvements>
- <https://www.epa.gov/lead>

Metro East Resources

- <https://www.epa.gov/il/communities-east-st-louis-area-and-sanitary-sewer-overflows>

Metro East Coordinator, Besty Nightingale: Nightingale.Elizabeth@epa.gov

More Information

- Region 5 Email Contact
 - Email us with questions and concerns R5EnvironmentalJustice@epa.gov.
- National EJ Listserv
 - For up-to-date information about national Environmental Justice funding opportunities, events, and webinars, subscribe to EPA's Environmental Justice listserv by sending a blank email to: <mailto:join-epa-ej@lists.epa.gov>.