

# EPA's Office of Environmental & External Civil Rights

## EJ Webinar Series for Tribes and Indigenous Peoples:

***Cumulative Impacts:  
How Tribes and EPA are Considering  
Cumulative Impacts to Advance EJ for All***

**October 30, 2024**



# Webinar Agenda

- **Mindful Moment and OEJECR Updates with:**
  - **Andy Bessler, OEJECR Tribal Coalition Coordinator**
- **EPA's SEP Recognition of Native American Heritage Month with:**
  - **Alison Hawley, Chair, American Indian & Alaska Native Special Emphasis Program Advisory Council, Office of Water**
- **EPA's Advancing Consideration of Cumulative Impacts with:**
  - **Charles Lee, OEJECR Senior Advisor**
  - **Andrew Geller, Senior Science Advisor, Office of Research and Development**
- **Tribal Perspectives on Cumulative Impact with:**
  - **Renee Keezer, Coordinator, White Earth Nation's Natural Resources Division**
  - **Kade Lenz, Program Director, Great Lakes Inter Tribal Epi-Center and National Tribal Toxic Council Member**
- **Questions and Discussion with Panelists**



# EPA's Mindful Moment



# EPA OEJECR Updates

- **Next Month: Native American Heritage Month!**
- **OEJECR Leadership meets with the National Tribal Caucus this week**
- **EJ Webinar Series for Tribes and Indigenous Peoples:**
  - **Monthly, on or near last Wednesday, at 2:30 PM – 4:00 PM ET.**
  - **Don't miss 2024's last webinar on Nov. 20th:  
Advancing EJ Through Storytelling**
  - **Features OEJECR Updates, Best EJ Practices, and Tribal Presenters**
  - **See past recordings/register for future events on [OEJECR's website!](#)**



# EPA's EJ Web Resources

- **EPA Finalizes Policy for Meaningful Engagement and Public Participation**
- **Environmental Justice Clearinghouse**
- **EJSCREEN**
- **EPA External Civil Rights Docket**
- **Environmental Justice Scorecard**
- **Resources to Help Communities page**



# EPA's Climate Web Resources

- **EPA National Climate Resources for Tribes**
- **EPA's Revamped AirNow Map**
- **NEW ! EPA's Climate Resilience and Adaptation Funding Toolbox (CRAFT)**
- **NEW ! Environmental Justice Climate Corps**
- **NEW ! Climate Pollution Reduction Grants (CPRG) Training, Tools and Technical Assistance**



# IRA FUNDED GRANTMAKERS

*CHECK OUT THE [GRANTMAKERS FAQ PAGE](#)  
THAT IS UPDATED REGULARLY!*



**Environmental  
Justice Thriving  
Communities  
Grantmaking  
Program (EJ TCGM)**

**Regional & National  
Grantmakers**

**GRANTS FOR TRIBES AND  
INDIGENOUS PEOPLES**



# EPA's EJ TGM Funding Breakdown

## Approximately \$600 M awarded to 11 Grantmakers

- 9 Regional and 3 National Grantmakers to provide 1000s of subgrants nationwide
- 80% of each \$50 million Regional Grantmaker award will be redistributed in Thriving Community Subgrants [\$40million]
- Tier 1-3 Competitive subgrants available for **Assessment**, **Planning**, and **Project Development** activities ranging from \$150,000 to \$350,000
- Non-competitive awards up to \$75,000 provided to severely capacity-constrained CBO

## Project Timeline

- **11 cooperative Agreements** with substantial EPA involvement & oversight
- Grantmakers awarded in **Spring 2024**. Subgrant applications open in **Summer 2024**
- **Project Period is 3 years**. Funds available until 2027 depending on award date





# 11 GRANTMAKERS



9 REGIONAL

3 NATIONAL

Proposed Geographic Area	Legal Business Name	Submitter's State	Grant Office
Region 1	Health Resources in Action	MA	Region 1
Region 2	Fordham University	NY	Region 2
Region 3	Green & Healthy Homes Initiative Inc.	MD	Region 3
Region 4	**Research Triangle Institute	NC	Headquarters
Region 5	The Minneapolis Foundation	MN	Region 5
Region 6	*Texas Southern University	TX	Region 6
Region 7	Reference Central National GM		NA
Region 8	JSI Research and Training Institute, Inc.	CO	Region 8
Region 9	Social and Environmental Entrepreneurs (SEE), Inc.	CA	Region 9
<b>Region 10</b>	<b>Philanthropy Northwest</b>	<b>WA</b>	<b>Region 10</b>
National GM East [Regions 1-3]	*Institute for Sustainable Communities	VT	Headquarters
<b>National GM West [Region 8-10]</b>	<b>Climate Justice Alliance</b>	<b>CA</b>	<b>Headquarters</b>
National GM Central [Region 4-7]	**Research Triangle Institute	NC	Headquarters

\*RTI will serve as both the Region 4 Grantmaker as well as one of three National Grantmakers

\*TCTAC or TCTAC partner

# Grantmakers can make subawards to eligible entities including:

- **NGO/CBO and other grassroots nonprofit organizations**
- **Tribal governments (both federally and state-recognized) and intertribal consortia (i.e., a partnership between 2+ Tribes that seek to achieve a common goal)**
- **Native American Organizations (incl. Native Hawaiian orgs., cooperatives, nonprofit corporations, partnerships, and associations with the authority to sign legally binding agreements)**
- **Puerto Rico, Hawaiian Native Organizations and US Territories**
- **Freely Associated States (FAS) – incl. local governmental entities and local nonprofit organizations in the Federated States of Micronesia, the Republic of the Marshall Islands, and Palau.**



# Active EJTC Grantmakers:

- **Region 2: Fordham University's Flourishing in Community initiative Request for Applications** [Accepting Applications!]
  - **Application Deadlines:** Applications will be accepted on a **rolling basis**, and the Grantmaker will operate for a **three-year duration**. First awards are expected to be made in **late winter 2024-2025**. **Contact Information:** To access the application or more information, including details on the application process, please visit [FORDHAM.EDU/FIC](http://FORDHAM.EDU/FIC) or email [InfoFIC@fordham.edu](mailto:InfoFIC@fordham.edu). workshop hosted by you! To request an info session or an application workshop, please complete the following [form](#).
- **Region 3: Green and Healthy Homes Initiative's (GHHI) Request for Applications** [Accepting Applications!]
  - **Application Deadlines:** Two-year grants are rolling until **November 30, 2024**, and one-year grants are rolling until **April 30, 2025**. **Contact Information:** [ThrivingCommunities@ghhi.org](mailto:ThrivingCommunities@ghhi.org) or call 443-687-7343. You can also **subscribe** to their TCGM email list.
- **Region 8: Mountains and Plains Environmental Justice Grants Hub (MAP EJ)** [RFPs open October 28!]
  - **Application Deadlines: December 12** **Contact Information:** Email [mapejgrants@jsi.com](mailto:mapejgrants@jsi.com) with any questions or to schedule a spot in our regular office hours and sign up [here](#) for our newsletter. You can also access Frequently Asked Questions [here](#).
- **Region 10: Philanthropy Northwest Type 3 Grant Request for Applications,**
  - Online portal to the **Request for Application** [Accepting Applications!]
  - **Application Deadlines:** Applications are accepted on a rolling basis for the window in which that grant type is open. Refer to [this page](#) for more information. **Contact Information:** Email [thrivingcommunities@philanthropynw.org](mailto:thrivingcommunities@philanthropynw.org) with any questions, **sign up [here](#) for updates**, and **sign up to join office hours [here](#)**. You can also access **Frequently Asked Questions [here](#)**.



# Historic Funding for Tribes

## Greenhouse Gas Reduction Fund:

- **\$27 b. for clean energy project funding and grants for low-income communities**
- **Solar for All provided \$7 b. to 60 awardees, including 6 Tribal awardees**
- **National Clean Investment Fund awarded \$14 b. to 3 entities to create clean financing institutions**
- **\$6 b. for a Clean Communities Investment Accelerator for 5 awardees, including the Native CDFI Network (\$400 million award), a nonprofit that serves 60+ U.S. Treasury-certified Native CDFIs.**
- **Native CDFIs have a presence in 27 states across rural reservation and urban communities. They strive to combat capital access barriers in Native communities.**



# Historic Funding for Tribes

- **Environmental and Climate Justice Community Change Grants Program (EJ CCG)**
  - **⚠ Application period closes on 11/21/24 ⚠**
  - **First EJ CCG Award announced for MTERA/GRID Alternatives to receive nearly \$20 million**
  - **More CCG awards announced soon!**
- **Tribal & Territory Grants: Diesel Emissions Reduction Act**
- **\$20 million Solid Waste Infrastructure for Recycling Grants for Tribes and Inter-Tribal Consortia**
- **White House's Access to Capital Clearinghouse for Tribes**



U.S. Environmental  
Protection Agency



# Thriving Communities

- **Environmental Justice Thriving Communities Technical Assistance Center (EJ TCTAC) Program** available over the next 5 years from 3 national and 15 regional TCTAC's.
- **EPA's EJ TCTAC Program** is part of the **Federal Thriving Communities Network Initiative** that is working towards a holistic government-wide framework for providing technical assistance.



## Environmental Justice Thriving Communities Technical Assistance Centers (TCTACs)

In partnership with the U.S. Department of Energy, EPA's TCTAC program is a network of technical assistance centers designed to remove barriers and improve accessibility to environmental and energy justice grant opportunities for communities that are underserved and overburdened.



TCTACs will help communities that are underserved and overburdened to:

- Identify** grant opportunities. 
- Prepare** grant applications and **manage** grant funding. 
- Build capacity** to effectively engage with decisionmakers. 
- Develop** collaborative community-based partnerships. 

For more information, please visit [The Environmental Justice Thriving Communities Technical Assistance Centers Program | US EPA](#)





# How do TCTACs work?

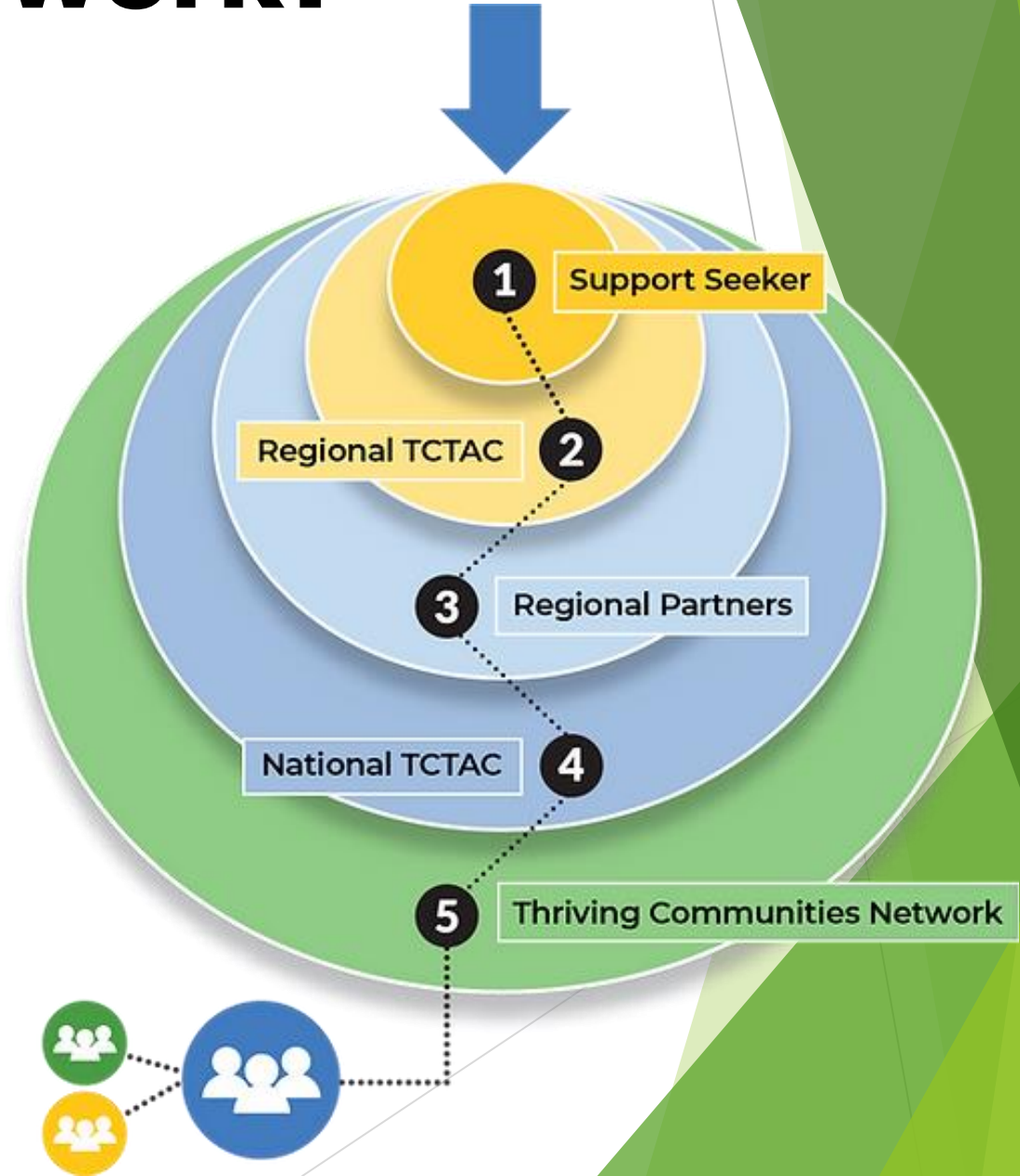
**Support seeker** from an eligible CBO, tribal government, or state/local government requesting expertise in federal grant applications, proposal writing, and grant management for environmental justice projects

**Regional TCTAC** prepared to provide technical assistance in collaboration with an extensive regional network of partners

**Regional Partnerships** with over 160 organizations nationwide ready to support regional efforts in building capacity on the ground

**National TCTAC** coordinating with regional centers and partners through resource-sharing and networking opportunities

**Thriving Communities** Network expanding our program's access to a range of technical assistance providers

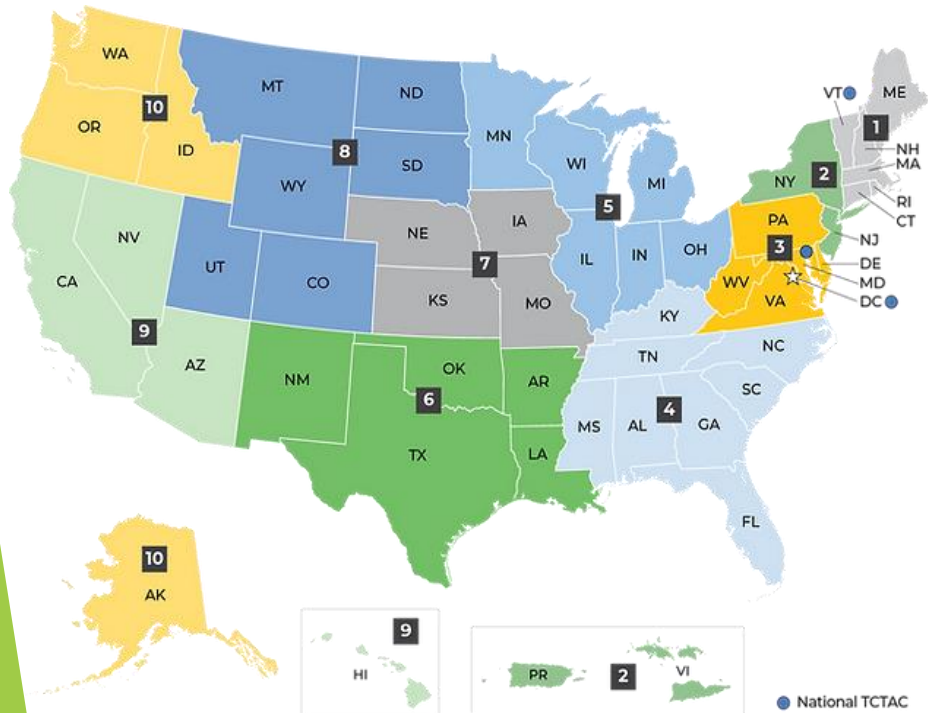




# Regional & National TCTAC Map and Contacts

[www.ejtctac.org](http://www.ejtctac.org)

Region	Name	Email or Phone	Request TA
<b>National Tribal Lead TCTAC</b>	<b><u><a href="#">NIHB: National Indian Health Board</a></u></b>	<b><u><a href="mailto:environmentalhealth@nihb.org">environmentalhealth@nihb.org</a></u> <b>(202) 996-4717</b></b>	<b><u><a href="#">Form</a></u></b>
National	<u><a href="#">ISC: Institute for Sustainable Communities</a></u>	<u><a href="mailto:ejtctac@sustain.org">ejtctac@sustain.org</a></u>	<u><a href="#">Email</a></u>
National	<u><a href="#">ICMA: International City/County Management Association</a></u>	<u><a href="mailto:tctac@icma.org">tctac@icma.org</a></u> (800) 745-8780	<u><a href="#">Form</a></u>



Region	Name	Email or Phone	Request TA
1	<u><a href="#">Institute for Sustainable Communities</a></u>	<u><a href="mailto:rsanderson@sustain.org">rsanderson@sustain.org</a></u>	<u><a href="#">Email</a></u>
2	<u><a href="#">WE ACT for Environmental Justice</a></u>	<u><a href="mailto:sarah.salem@weact.org">sarah.salem@weact.org</a></u>	<u><a href="#">Form</a></u>
2	<u><a href="#">Engage &amp; Assist Grassroots organization for Environment/Energy Justice and Leadership capacity building (EAGLE) at the Inter-American University of Puerto Rico-Metropolitan Campus</a></u>	<u><a href="mailto:ygovender@metro.inter.edu">ygovender@metro.inter.edu</a></u> (787) 250-1912	<u><a href="#">Form</a></u>
3	<u><a href="#">National Wildlife Federation's Mid-Atlantic Thriving Communities Technical Assistance Center</a></u>	(202) 792-5350	<u><a href="#">Form</a></u>
4	<u><a href="#">REACT4EJ at RTI International</a></u>	<u><a href="mailto:jarmstrongbrown@rti.org">jarmstrongbrown@rti.org</a></u> (866) 309-4559	<u><a href="#">Form</a></u>
4, 6	<u><a href="#">Deep South Center for Environmental Justice (DSCEJ) Community Investment Recovery Center (CIRC)</a></u>	<u><a href="mailto:circ@dscej.org">circ@dscej.org</a></u>	<u><a href="#">Form</a></u>
5	<u><a href="#">Blacks in Green (BIG)</a></u>	<u><a href="mailto:bigejtctac@blacksingreen.org">bigejtctac@blacksingreen.org</a></u> (833) 828-2269	<u><a href="#">Form</a></u>
5	<u><a href="#">Great Lakes Environmental Justice Thriving Communities Technical Assistance Center (Great Lakes EJ TCTAC) at the University of Minnesota</a></u>	<u><a href="mailto:tctac@umn.edu">tctac@umn.edu</a></u> (800) 525-8636	<u><a href="#">Email</a></u>
6	<u><a href="#">South Central TCTAC at New Mexico State University (NMSU)</a></u>	<u><a href="mailto:patsulli@nmsu.edu">patsulli@nmsu.edu</a></u> (575) 646-2913	<u><a href="#">Email</a></u>
7	<u><a href="#">Heartland Environmental Justice Center</a></u>	<u><a href="mailto:heartlandej@wichita.edu">heartlandej@wichita.edu</a></u> (316) 945-6615	<u><a href="#">Form</a></u>
8	<u><a href="#">Mountains and Plains Thriving Communities Collaborative at Montana State University</a></u>	<u><a href="mailto:R8TCTAC@montana.edu">R8TCTAC@montana.edu</a></u> (406) 994-6904	<u><a href="#">Form</a></u>
9	<u><a href="#">The Center for Community Energy and Environmental Justice (CCEEJ) at San Diego State University (SDSU)</a></u>	<u><a href="mailto:cceej@sdsu.edu">cceej@sdsu.edu</a></u> (619) 594-8287	<u><a href="#">Form</a></u>
9	<u><a href="#">Western Environmental Science Technical Assistance Center for Environmental Justice (WEST EJ Center) at the University of Arizona</a></u>	<u><a href="mailto:lothrop@arizona.edu">lothrop@arizona.edu</a></u> (520) 314-7971	<u><a href="#">Form</a></u>
10	<u><a href="#">University of Washington Center for Environmental Health Equity (CEHE)</a></u>	<u><a href="mailto:cehe@uw.edu">cehe@uw.edu</a></u> (206) 543-0608	<u><a href="#">Form</a></u>
10	<u><a href="#">Northwest Environmental Justice Center (NW EJ Center) at Willamette Partnership</a></u>	<u><a href="mailto:connect@nwejc.org">connect@nwejc.org</a></u>	<u><a href="#">Form</a></u>

Source: Flickr

# EPA Special Emphasis Programs

The purpose of Special Emphasis Programs is to assist management in promoting equal employment opportunity and diversity and inclusion in the workplace. By establishing and utilizing Special Emphasis Programs, EPA can raise awareness of the importance of EEO and D&I principles and demonstrate the agency's commitment to a model EEO workplace.

## **Statutory and Executive Order Authorities**

- Civil Rights Act of 1964, as amended
- Age Discrimination in Employment Act
- Rehabilitation Act
- Equal Employment Opportunity Act

## **Special Emphasis Program Objectives**

- Improve employment and advancement opportunities for their respective constituents in the Federal service
- Identify systemic causes of discrimination against protected groups
- Seek ways to help protected groups to advance by using their skills more fully
- Monitor agency progress in eliminating discrimination and adverse impact on protected groups in employment and agency programs
- Educate Federal employees and managers about the extent of various forms of discrimination within the Federal Service.



# American Indian & Alaska Native Special Emphasis Program

## AI/AN SEP Objectives

- Investigate the root causes of low participation rates of AI/AN employees in EPA's mission critical occupations and management positions and recommend solutions to management.
- Examine agency workplace flexibilities and policies such as remote work and telework to ensure they are consistently applied and maximized.
- Provide constituents with a network of mutual support and a forum for discussing employment-related concerns.
- Raise awareness of AI/AN people, histories, cultures, knowledges, traditions, current events, challenges, and contributions across EPA.
- Enhance outreach and engagement with Tribal Colleges and Universities (TCUs) and develop a more robust pathway for early career AI/AN professionals.



# American Indian & Alaska Native Special Emphasis Program Managers

Special Emphasis Program Managers serve as representatives for their Special Emphasis Programs. Management solicits volunteers to serve as SEPMs on a "collateral duty" basis. They are considered members of EPA's management team because they provide advice and guidance to management on initiatives and issues regarding their respective programs. Volunteers must be approved by their immediate supervisor or management chain and may devote up to 20 percent of official duty time to perform SEPM functions.

- **Analyst:** Identify red flags through analysis of employee data and determine root causes in workplace policies, procedures, and practices.
- **Advisor:** Advises management to ensure personnel actions and agency policies are equitable.
- **Liaison:** Cultivates relationships with organizations and constituencies within and outside of EPA. Serves as a conduit between employees and management.
- **Manager:** Set goals and develop a strategy to achieve those goals. Delegate program responsibilities appropriately.
- **Advocate:** Effectively represents constituency and advocates for improvements to agency policies and practices to ensure equality of employment opportunities.



# USG Native American Heritage Month Observances

## National Museum of the American Indian

- Nov. 11: Honoring Native Veterans (DC)
- Nov. 22-29: Native Cinema Showcase 2024 (DC)
- Nov. 29: Native American Heritage Day—Honoring Zitkala-Ša with Hoop Dancer Starr Chief Eagle (DC)
- Nov. 29: Native American Heritage Day – Stomp Dancing with Hithla (NY)
- Why We Serve: Native Americans in the United States Armed Forces (Online Exhibit)

## National Park Service

- 2024 Native American Heritage Month Commemoration



# **EPA's Efforts to Advance Consideration of Cumulative Impacts**

**Charles Lee, OEJECR  
Andrew Geller, ORD**

**EJ Webinar Series for Tribes  
and Indigenous Peoples  
October 30, 2024**





# Place Matters



# Administration Commitments



- Four Executive Orders:
  - EO 13985: Advancing Racial Equity and Support for Underserved Communities Through the Federal Government
  - EO 14008: Tackling the Climate Crisis at Home and Abroad
  - EO 14091: Further Advancing Racial Equity and Support for Underserved Communities Through the Federal Government
  - EO 14096: Revitalizing Our Nation's Commitment to Environmental Justice for All
- EPA Strategic Plan, Goal 2
- EPA Equity Action Plans
- EPA Administrator Regan issued an Agency-wide directive to better serve historically marginalized communities using cumulative impact assessment



# Key Goals

Support EPA decision makers



Improve health and environment

# Three Prongs of EPA's Cumulative Impacts Work



**PROGRAM  
COMMITMENTS**



**PERFORMANCE  
METRICS**



**FRAMEWORK**

# Framework: Key Concepts

GOALS AND PRINCIPLES



```
graph TD; A[GOALS AND PRINCIPLES] --> B[SCIENTIFIC EVIDENCE AND LIVED EXPERIENCE]; B --> C[CORE CONCEPTS]; C --> D[PROCESS]; D --> E[EXISTING PRACTICE/CONTINUOUS IMPROVEMENT];
```

SCIENTIFIC EVIDENCE AND LIVED EXPERIENCE

CORE CONCEPTS

PROCESS

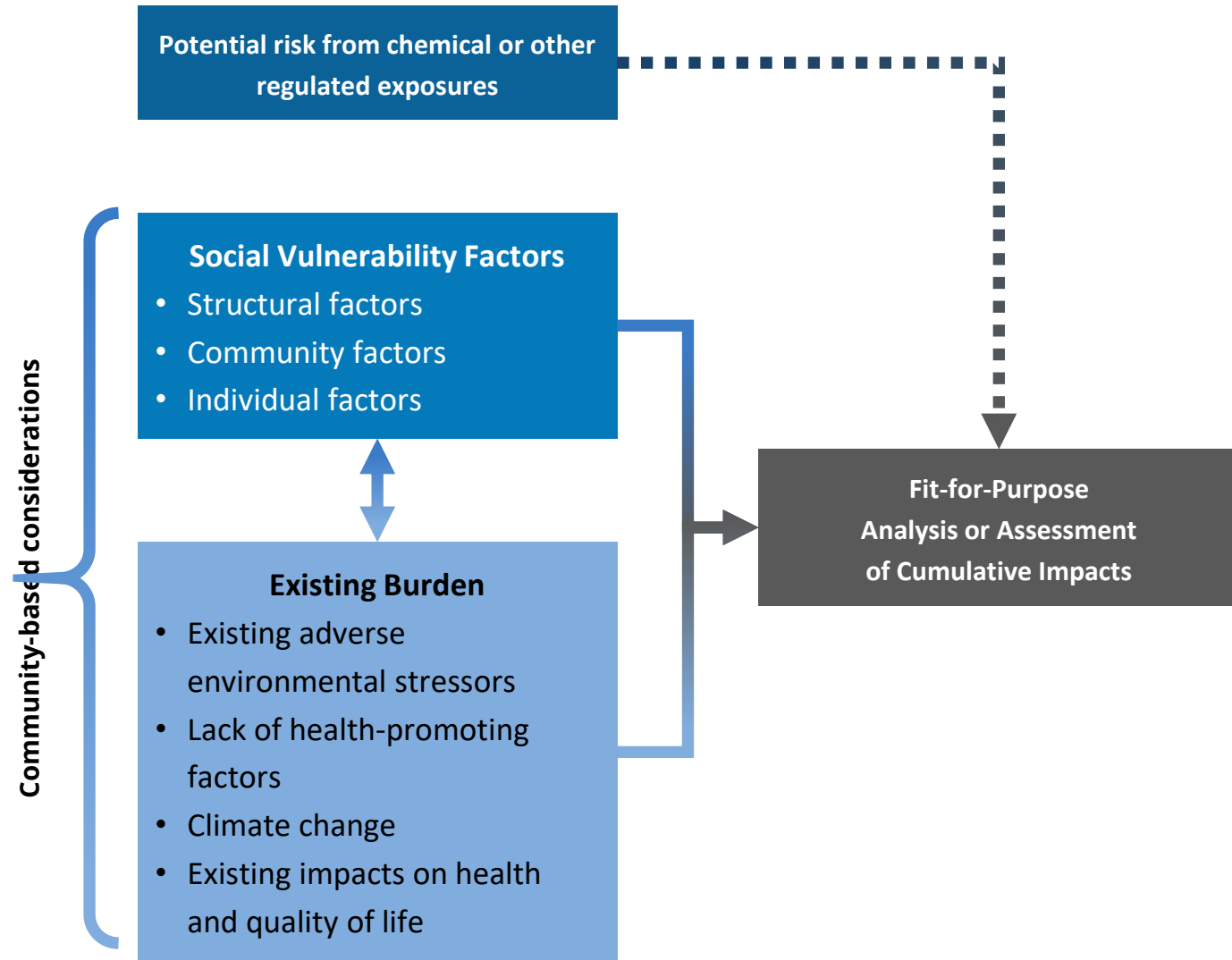
EXISTING PRACTICE/CONTINUOUS IMPROVEMENT

# What are cumulative impacts?

EPA recognizes cumulative impacts as the totality of exposures to combinations of chemical and non-chemical stressors and their effects on health and quality of life outcomes

**Multiple Impacts**

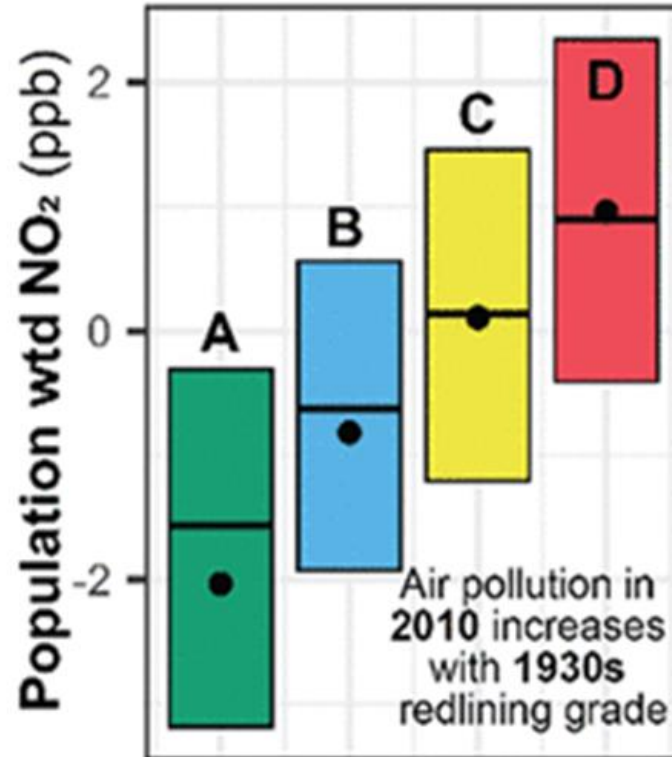
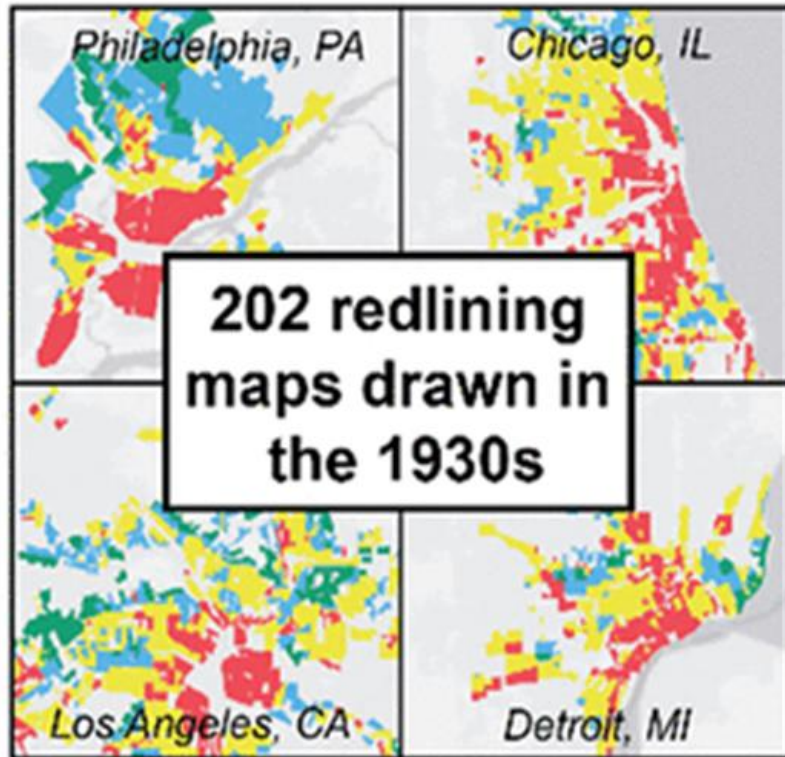
**Disproportionate Impacts**





# Why is EPA Working on Cumulative Impacts?

## Modern air pollution disparities in historically redlined areas



- Acting on substantial scientific evidence of pattern concentrated environmental burdens
- Acknowledging long-standing testimony from communities regarding their lived experience
- Acknowledging government role in policies/practices resulting in inequitable distribution of environmental burdens

Lane, et al. *Environ. Sci. Technol. Lett.* 2022, 9, 4, 345–350

# Why is EPA Working on Cumulative Impacts?

- Ongoing community attention and awareness
- Paper on Tribal Issues Related to Tribal Traditional Lifeways, Risk Assessment, and Health & Well Being: Documenting What We've Heard (EPA, 2006)
- Traditional Tribal Subsistence Exposure Scenario and Risk Assessment Guide (Harper et. Al, 2007)
- Understanding Tribal Exposures to Toxics Report (National Tribal Toxics Council, 2015)

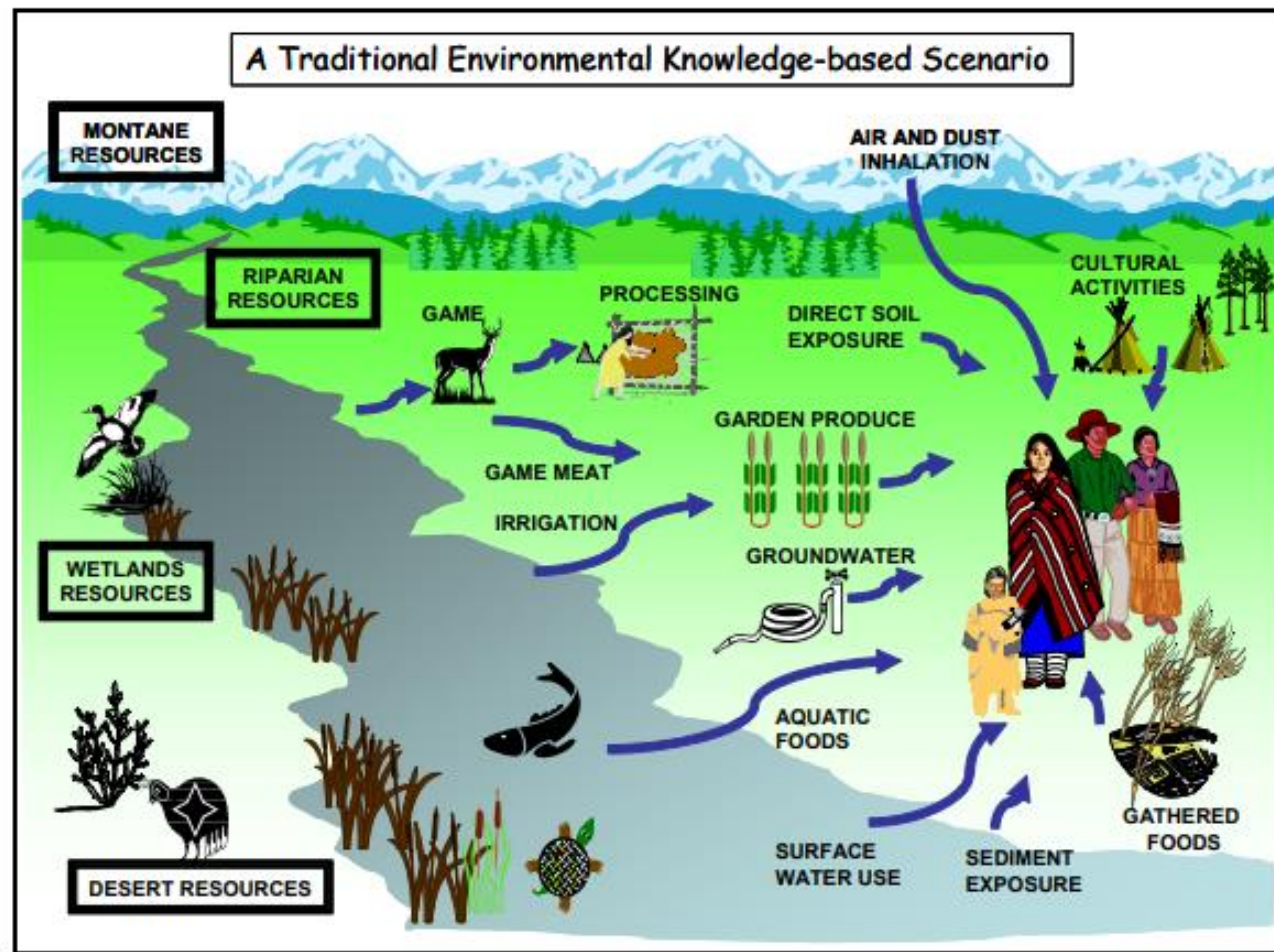


Figure 5. Tribal Exposure Pathways Based on Subsistence Lifestyle (Harper et. al, 2007)



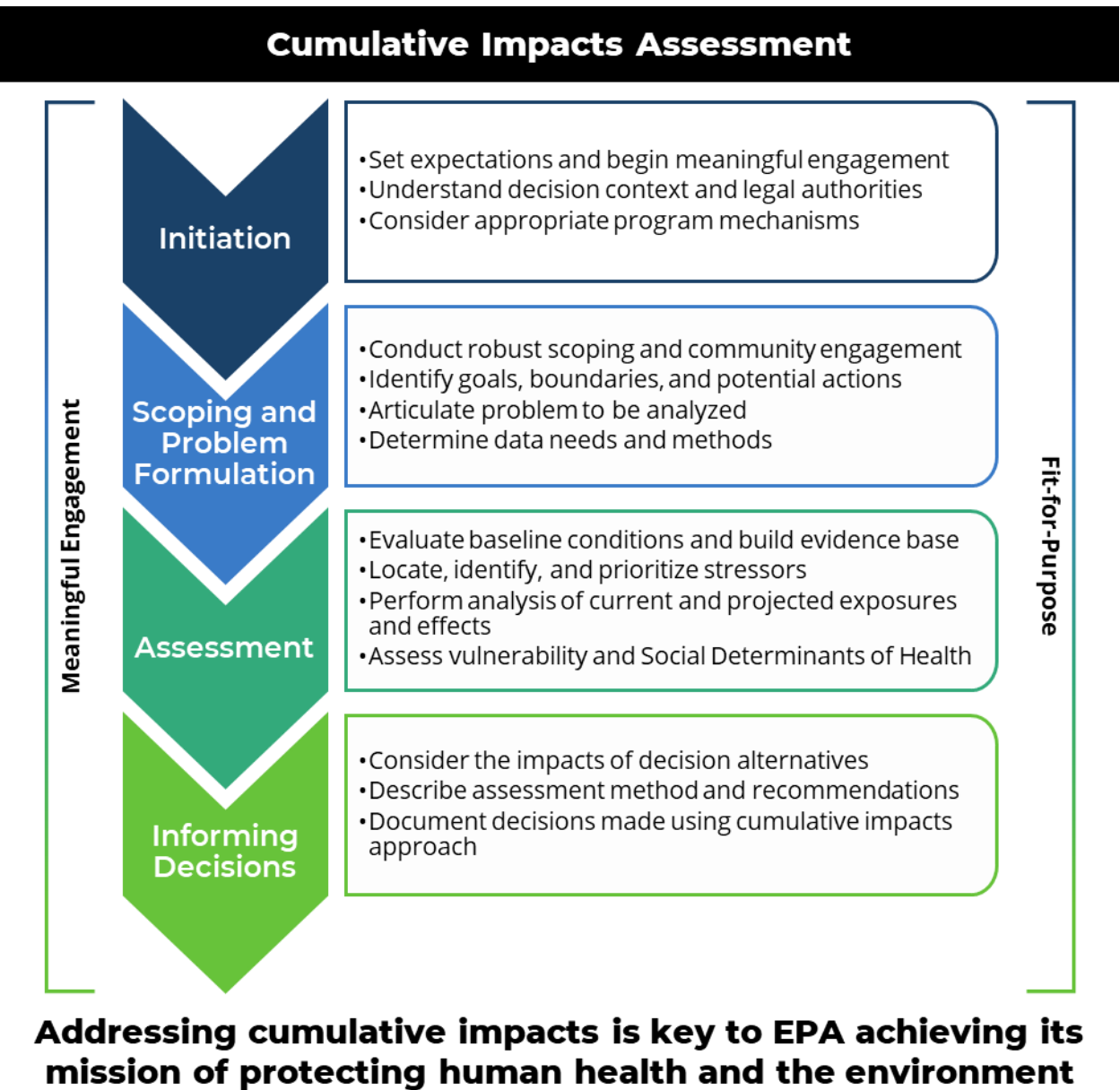
# EPA's Principles for Considering Cumulative Impacts in Decision-Making

1. Center cumulative impact work on improving human health, environment, and the quality of life in all communities.
2. Focus on the disproportionate and adverse burden of cumulative impacts.
3. Apply a fit-for-purpose approach for assessing and addressing cumulative impacts.
4. Meaningfully engage communities and incorporate their lived experience.
5. Make decisions and take action based on available data and information.
6. Operationalize and integrate ways consider and address cumulative impacts.



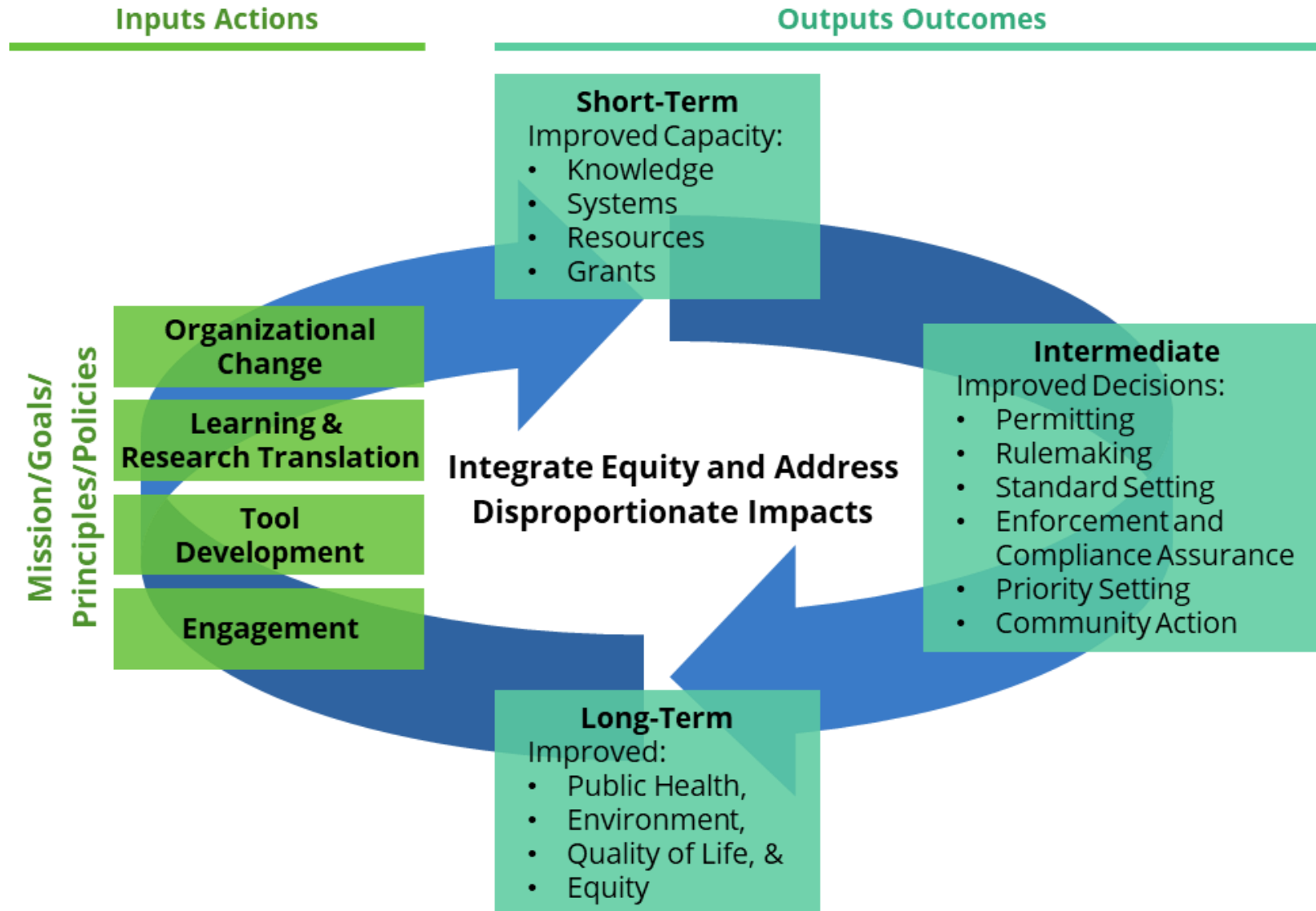
# Processes

- While cumulative impacts refers to total burden, cumulative impacts analysis or assessment **does not require identifying, measuring, and quantifying all exposures and effects**
- There are methods that capture environmental conditions and stressors for the purpose of informing decisions
- Fit-for-purpose analyses that reflect context-specific priorities and needs



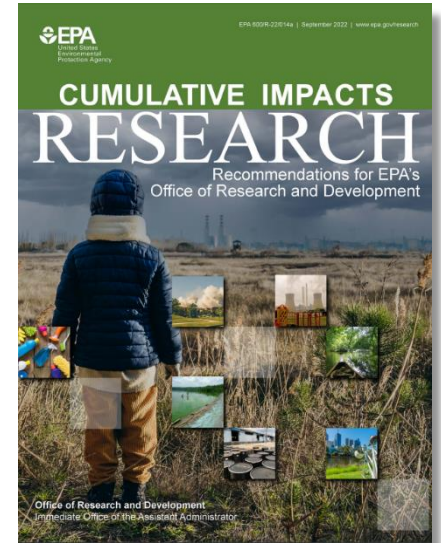
# Operationalizing Disproportionate and Cumulative Impacts at US EPA

## ANALYSIS AND CONSIDERATION OF CUMULATIVE IMPACTS



# Cumulative Impacts in Context

- Research Recommendations Report
- Cumulative Health Impact Assessment (CHIA) Tool
- Community Action Plan SOP – Region 5
- HIA for Brownfields Redevelopment, Rockford IL
- NPDES Permit: Cook Inlet, Alaska
- Underground Injection Control Permit: Dewey Burdock, S Dakota
- Underground Injection Control Permit: Denied aquifer exemption: Madison aquifer, Fremont County, Wyoming



# Essential Take Aways from EPA's Cumulative Impacts Implementation

- Keen sense about need to promote action, learning, and building capacity in EPA's workforce
- Alignment between framework, performance metrics, and work plan commitments to build a full Agency approach for considering cumulative impacts at the local, regional, and national scales consistent with applicable law
- EPA's approach is centered on collaboration with communities, states, territories, and Tribes

# Points of Contact

- Andrew Geller: EPA, Office of Research and Development  
[geller.andrew@EPA.gov](mailto:geller.andrew@EPA.gov)
- Amanda Hauff: EPA, Office of International and Tribal Affairs  
[hauff.amanda@EPA.gov](mailto:hauff.amanda@EPA.gov)
- Surabhi Shah: EPA, Region 4 Cumulative Impacts sub-lead Region  
[shah.surabhi@EPA.gov](mailto:shah.surabhi@EPA.gov)
- Charles Lee: EPA, Office of Environmental Justice and External Civil Rights  
[lee.charles@EPA.gov](mailto:lee.charles@EPA.gov)

# Cumulative Impacts

Renee Keezer

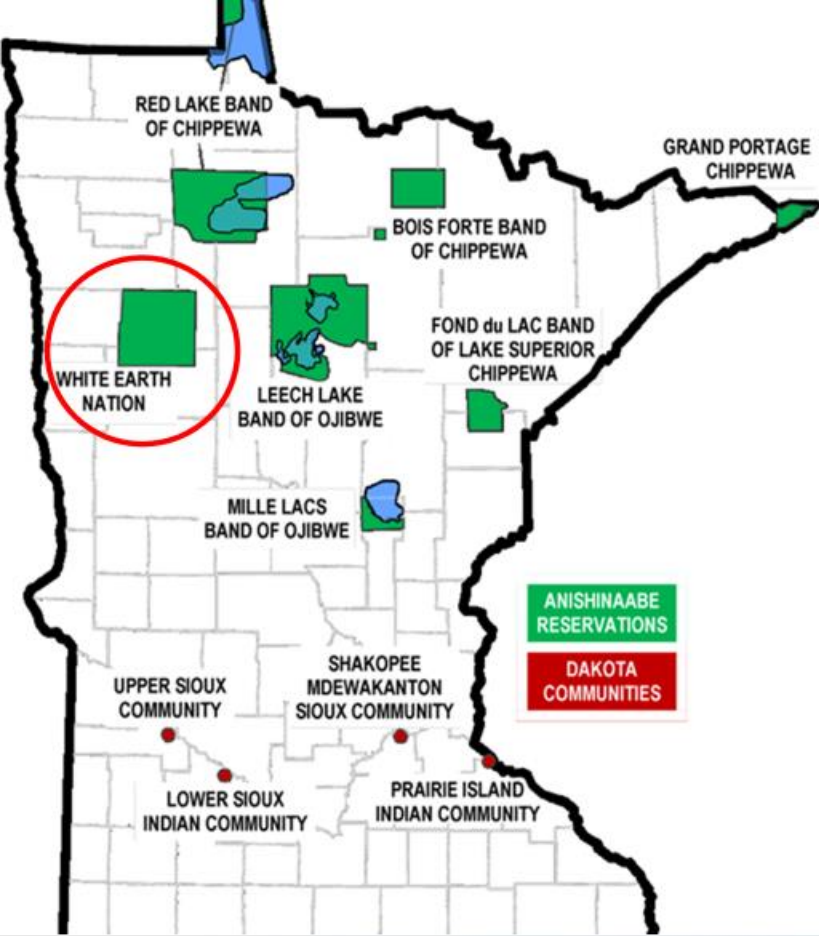
White Earth Natural Resources



# Cumulative Impacts

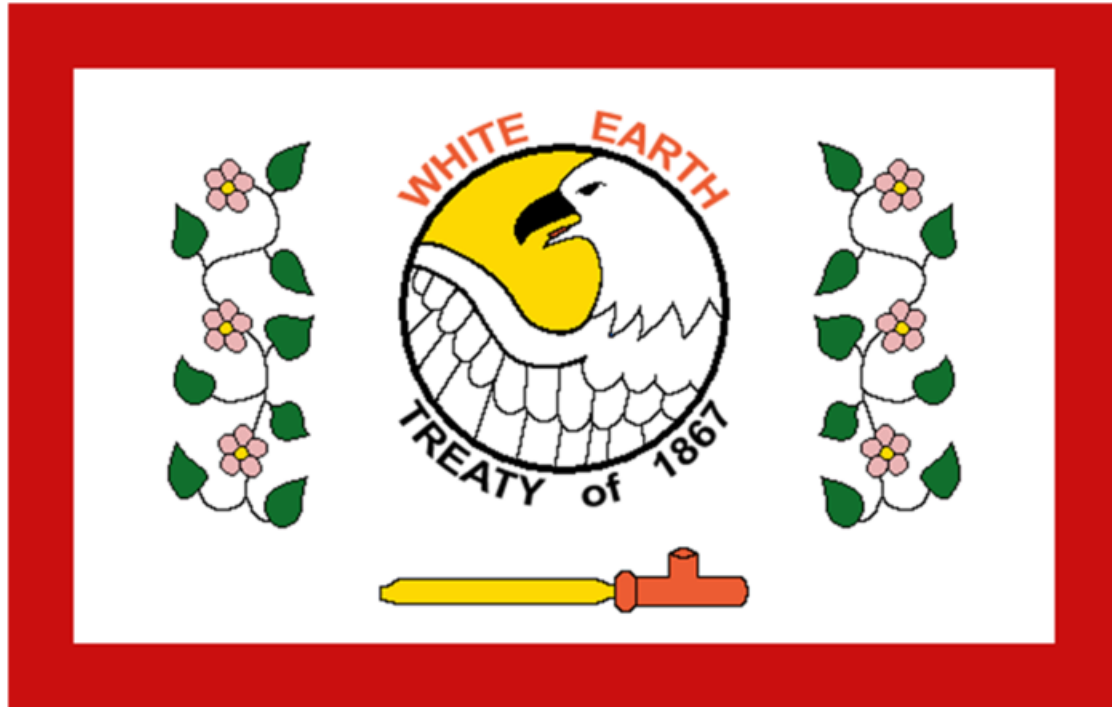
What does it  
mean?

The totality of exposures to combinations of chemical and non-chemical stressors and their effects on health, well-being, and quality of life outcomes.

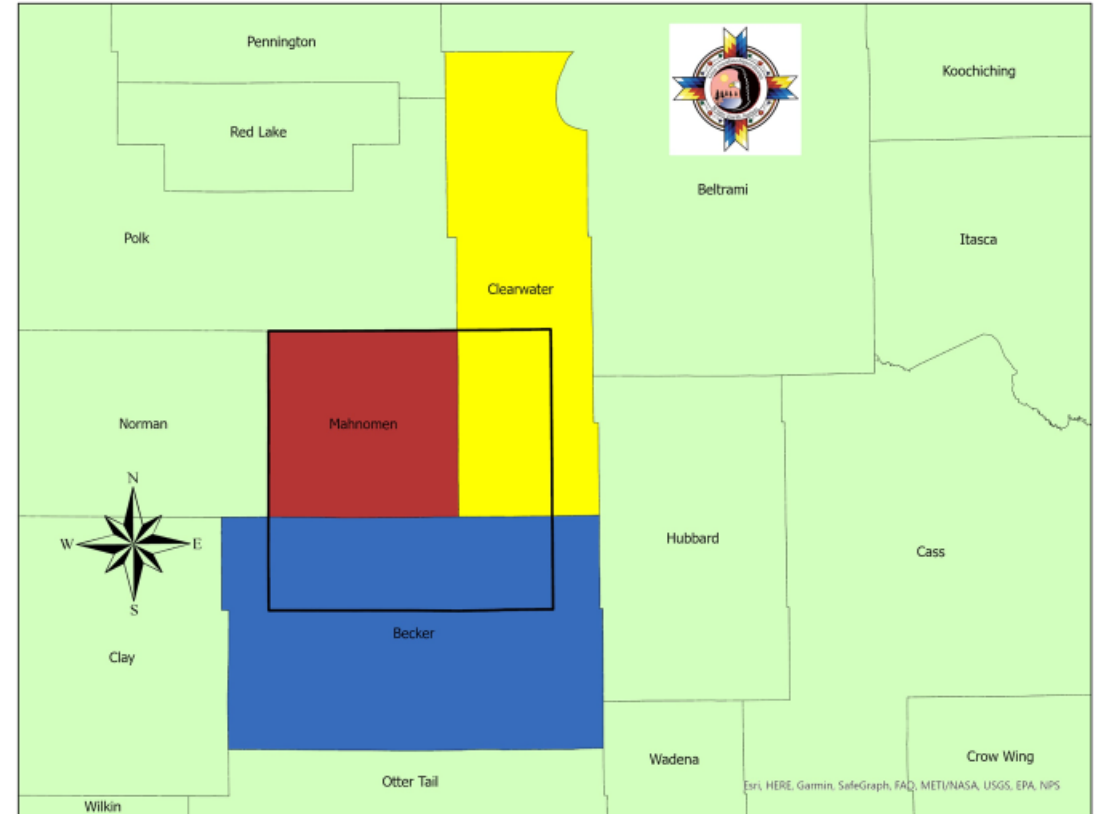


# White Earth Band of the Minnesota Chippewa Tribe





## White Earth County Map



0 12.5 25 50 Miles

### Legend

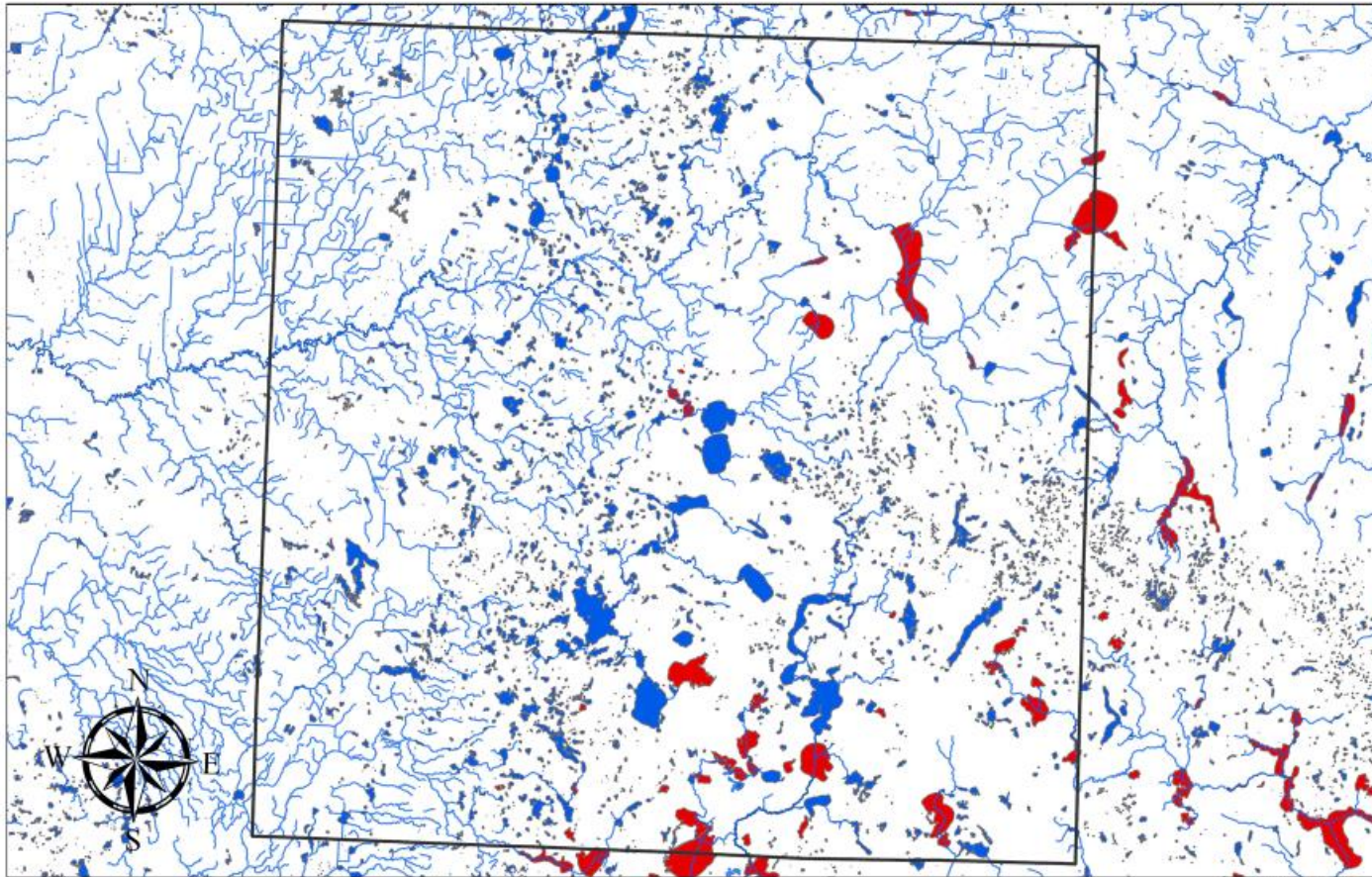
- White Earth Reservation Boundary
- Clearwater County
- Mahnomen County
- Becker County
- County Boundaries

Data Source: Minnesota Counties-Minnesota Geospatial Data Commons  
 White Earth Reservation Boundary-White Earth Land Department  
 NAD 1983 UTM Zone 15N

Renee Keezer  
 White Earth Natural Resources  
 Pesticide Coordinator  
 09/21/2022



## White Earth Waterbodies and Waterways

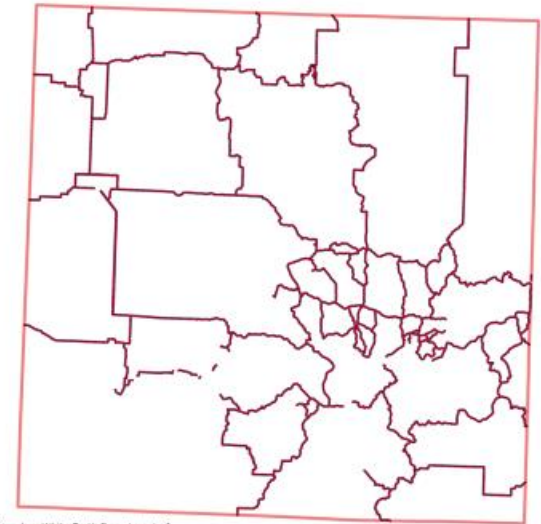


### Legend

- White Earth Reservation Boundary
- Wild Rice Lakes
- Water bodies
- Rivers and Streams

Renee Keezer  
 White Earth Natural Resources  
 Pesticide Coordinator  
 Hydrology and wild rice lake data-MN geospatial Data Commons  
 06/24/2022

## White Earth Reservation Snowmobile Trails



Data Source: White Earth Boundary-White Earth Department of  
 Natural Resources Land Office  
 Snowmobile Trails Data-MNGEO Minnesota IT Service Geospatial  
 Information Office

0 5 10 20 Miles

White Earth Department of Natural Resources  
 Pesticide Coordinator



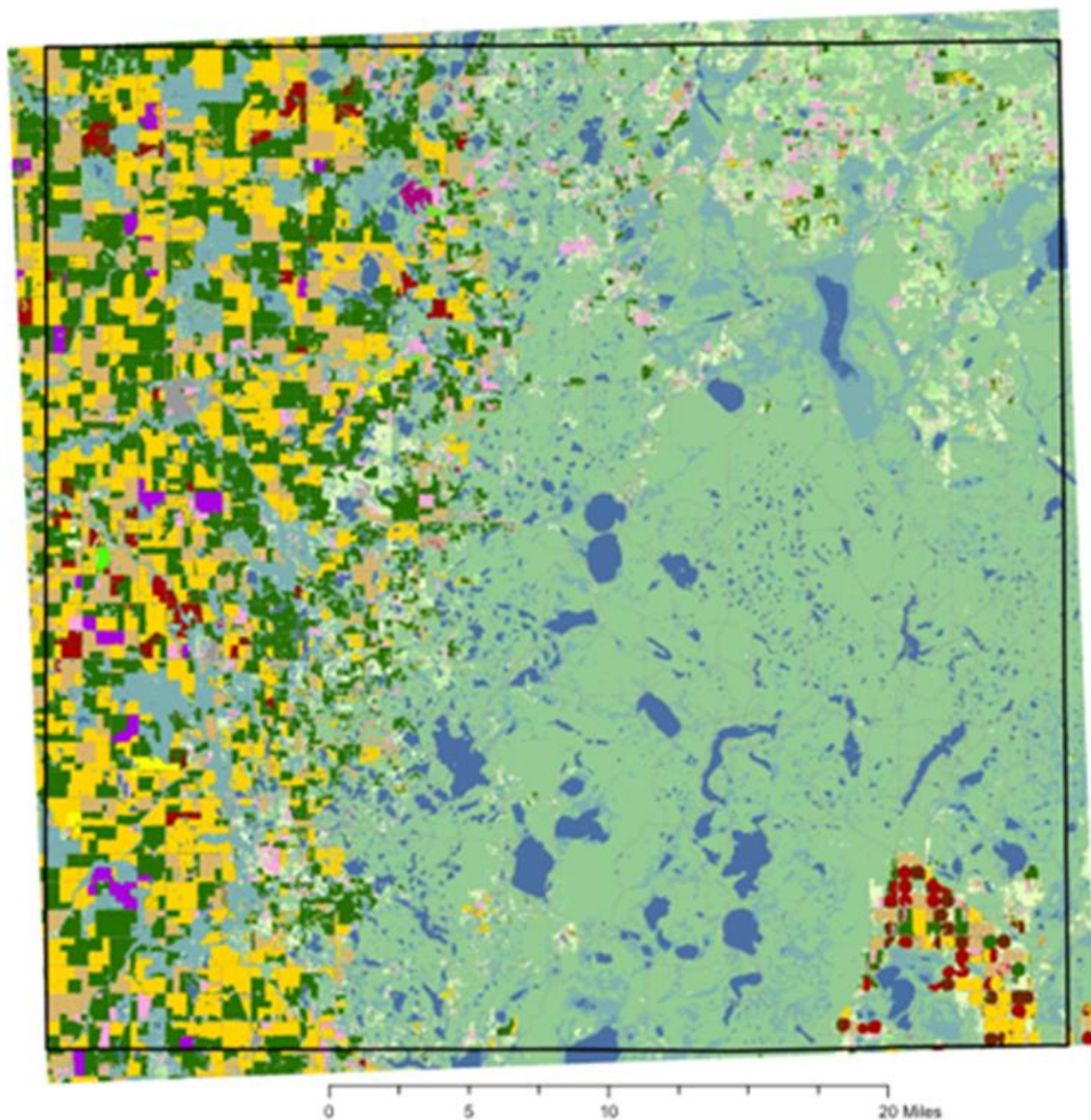
Image: **WATER WAY** Shannon Wadena and his son, Shannon Jr. (right), work their canoe across Upper Rice Lake near Bagley, Minnesota. © Jenn Ackerman and Tim Gruber <https://www.nature.org/en-us/magazine/magazine-articles/ojibwe-wild-rice-harvest/>



# White Earth Land Use Land Cover 2021



## Legend



- |                                  |                          |                           |
|----------------------------------|--------------------------|---------------------------|
| White Earth Reservation Boundary | Buckwheat                | Developed/ Med Intensity  |
| Corn                             | Sugarbeets               | Developed/ High Intensity |
| Sorghum                          | Dry Beans                | Barren                    |
| Soybeans                         | Potatoes                 | Deciduous Forest          |
| Sunflower                        | Other Crops              | Evergreen Forest          |
| Barley                           | Peas                     | Mixed Forest              |
| Spring Wheat                     | Herbs                    | Shrubland                 |
| Winter Wheat                     | Clover/ Wildflowers      | Grassland/ Pasture        |
| Rye                              | Sod/Grass Seed           | Woody Wetlands            |
| Oats                             | Fallow/Idle Cropland     | Herbaceous Wetlands       |
| Millet                           | Open Water               | Triticale                 |
| Canola                           | Developed/ Open Space    |                           |
| Alfalfa                          | Developed/ Low Intensity |                           |
| Other Hay/ Non Alfalfa           |                          |                           |







# Fish

- Mercury
- PFAS
- Microplastics
- Pharmaceuticals
- Personal Care Products
- Shoreline Development
- Recreation
- PPD-quinone
- Infrastructure
- Climate Change



# Wild Rice

- Sulfate
- Pesticides
- Heavy metals
- Shoreline Development
- Recreation
- Climate Change

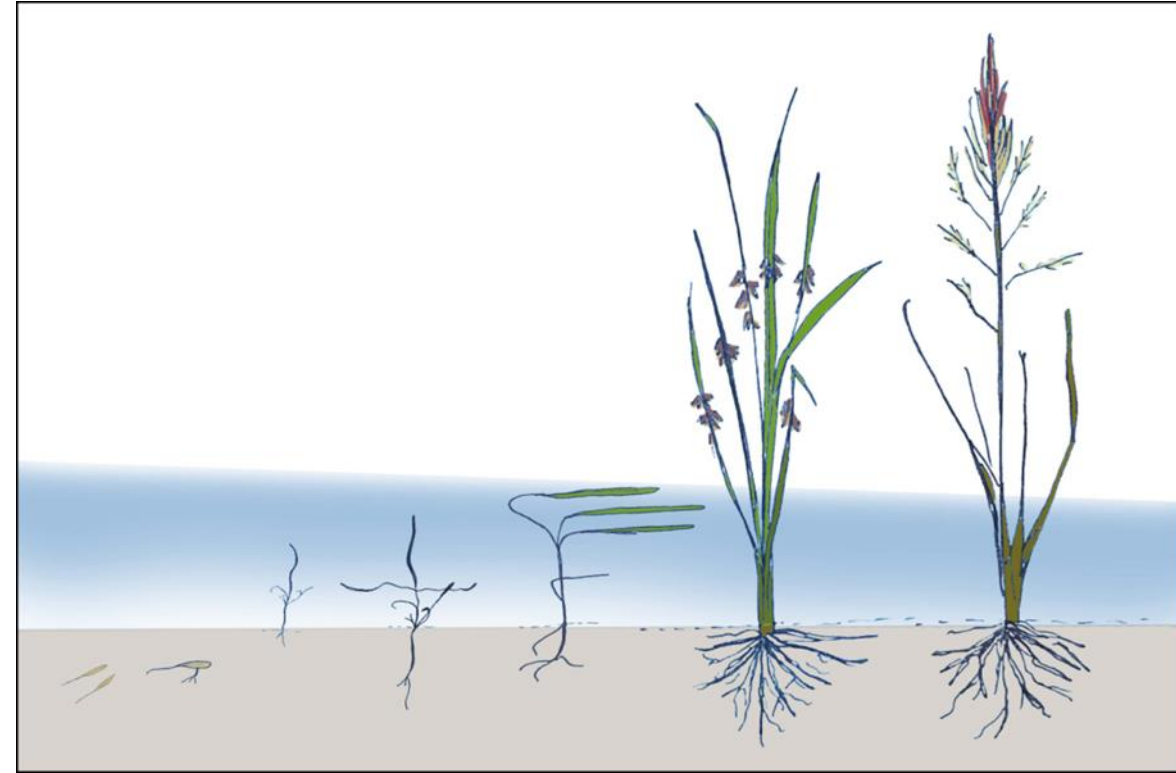
Photo Credit: John Enger, MPR News



# Wild Rice

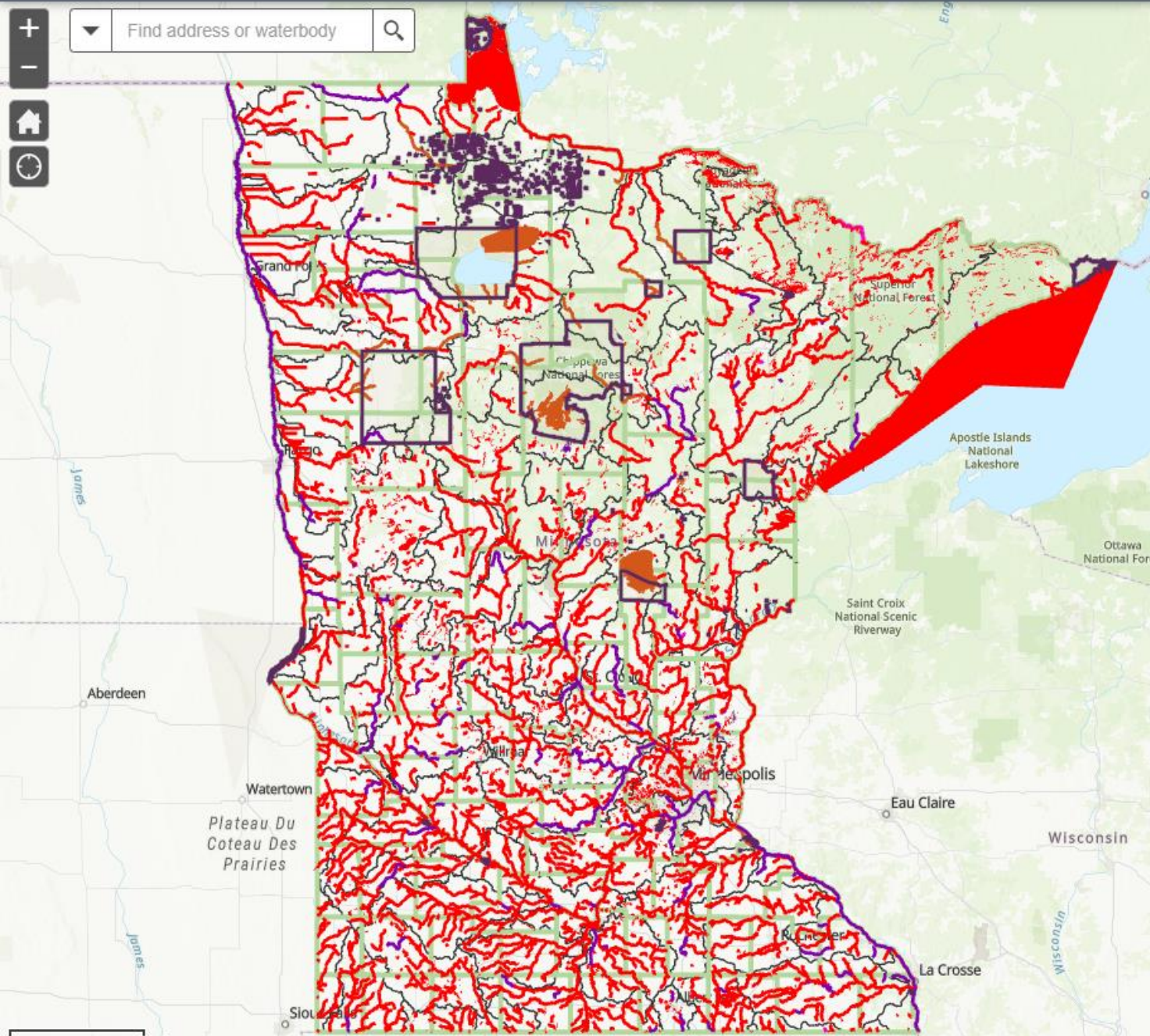


Wild Rice in the floating leaf stage.  
Credit: 1854 Treaty Authority



Wild rice is an annual plant, meaning it grows from a seed each year. In early summer, it's in the floating leaf stage, when its thin root systems make it vulnerable to water level fluctuations. Credit: Madeline Nyblade





<https://gisdata.mn.gov/dataset/impaired-waters-viewer>

# Impairments

- Acetochlor
- Aluminum
- Ammonia, unionized
- Arsenic
- Chloride
- Chlorpyrifos
- Copper
- DDT (Dichlorodiphenyltrichloroethane)
- Dieldrin
- Dioxin (including 2,3,7,8-TCDD)
- Dissolved oxygen
- E. coli: Escherichia coli (E. coli)
- Fecal coliform
- Fish bioassessments
- Mercury in fish tissue
- Mercury in water column
- Benthic macroinvertebrate
- bioassessments
- Nitrate
- Nutrients
- Polychlorinated biphenyls (PCBs) in fish tissue
- Polychlorinated biphenyls (PCBs)
- Perfluorooctane Sulfonate (PFOS) in fish tissue
- Perfluorooctane
- Sulfonate (PFOS)
- pH
- Aquatic plant bioassessments
- Sulfate
- Turbidity
- Temperature
- Toxaphene
- TSS: Total suspended solids

# Risk Assessment

- One analyte or stressor
- Tolerances
- Aquatic life benchmarks
- Human Health benchmarks



# Trust Responsibility



Access to  
Clean Water



Access to  
resources



Access to  
Food



Sustainability



Obligation



# What are the cumulative impacts?



ENVIRONMENTAL  
HEALTH



PHYSICAL  
HEALTH



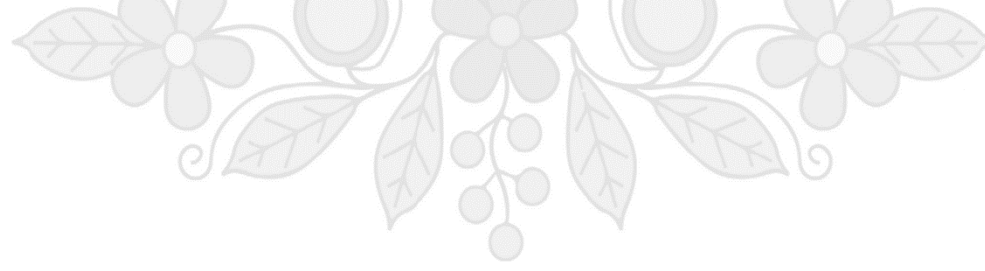
MENTAL HEALTH



SOCIAL HEALTH

# Resources

- Chemicals in Plastics-A technical report. UN Environment Programme. May 2023 [https://www.unep.org/resources/report/chemicals-plastics-technical-report#:~:text=Some%20key%20findings%20\\*%20Based%20on%20the,household%20products%2C%20and%20agriculture%2C%20aquaculture%20and%20fisheries.](https://www.unep.org/resources/report/chemicals-plastics-technical-report#:~:text=Some%20key%20findings%20*%20Based%20on%20the,household%20products%2C%20and%20agriculture%2C%20aquaculture%20and%20fisheries.)
- Campen, Matthew et al. Bioaccumulation of Microplastics in Decedent Human Brains Assessed by Pyrolysis Gas Chromotography-Mass Spectrometry. May 2024. <https://pmc.ncbi.nlm.nih.gov/articles/PMC11100893/>
- Atamanalp, Muhammed, et al. Microplastics in Tissues (Brain, Gill, Muscle and Gastrointestinal) of Mullus barbatus and Alosa immaculata. Archives of Environmental Contamination and Toxicology. October 2021. [https://www.researchgate.net/publication/354704293\\_Microplastics\\_in\\_Tissues\\_Brain\\_Gill\\_Muscle\\_and\\_Gastrointestinal\\_of\\_Mullus\\_barbatus\\_and\\_Alosa\\_immaculata](https://www.researchgate.net/publication/354704293_Microplastics_in_Tissues_Brain_Gill_Muscle_and_Gastrointestinal_of_Mullus_barbatus_and_Alosa_immaculata)
- Van Dellen, Grace. Climate Change Threatens the Future of Wild Rice. EOS. December 18, 2023 <https://eos.org/articles/climate-change-threatens-the-future-of-wild-rice>
- Enger, John. MPCA Wild Rice, clean water plan walks political tightrope. MPR News. March 24, 2015. <https://www.mprnews.org/story/2015/03/24/mpca-sulfate-standard>
- 1854 Treaty Authority. Biology of Wild Rice. <https://www.1854treatyauthority.org/wild-rice/biology-of-wild-rice.html>
- National Institute of Environmental Health Sciences. Arsenic <https://www.niehs.nih.gov/health/topics/agents/arsenic>
- National Cancer Institute. Arsenic <https://www.cancer.gov/about-cancer/causes-prevention/risk/substances/arsenic>
- Kuivenhoven, Matthew; Mason, Kelly. Arsenic Toxicity. National Library of Medicine. June 12, 2023. <https://www.ncbi.nlm.nih.gov/books/NBK541125/#:~:text=Arsenic%20is%20a%20naturally%20found,as%20in%20a%20gaseous%20form.>
- Glacial Lake Agassiz information <https://www.sciencedirect.com/topics/earth-and-planetary-sciences/glacial-lake-agassiz>
- Minnesota Pollution Control Agency Impaired Water: Final 2024 <https://mpca.maps.arcgis.com/apps/webappviewer/index.html?id=fcfc5a12d2fd4b16bc95bb535d09ae82>
- Regulation of Pesticide Residues on Food. EPA <https://www.epa.gov/pesticide-tolerances>



# Introduction To NTTC and Recognition of Tribes Under TSCA

---

KADE LENZ

NATIONAL TRIBAL TOXICS COUNCIL

GREAT LAKES INTER-TRIBAL EPIDEMIOLOGY CENTER

OCTOBER 30<sup>TH</sup>, 2024





## What is the NTTC?



An EPA Tribal Partnership Group (TPG) started in 2012 with Office of Pollution Prevention and Toxics (OPPT).



OPPT is the office responsible for administering:

Pollution  
Prevention Act

Toxics Release  
Inventory (TRI)

Toxic  
Substances  
Control Act  
(TSCA)

# Tribes and Amended TSCA



The Lautenberg Act defines “potentially exposed or susceptible subpopulations “ to mean “a group of individuals within the general population identified by the Administrator who, due to either **greater susceptibility** or **greater exposure**, may be at greater risk than the general population to adverse health effects from exposure to a chemical substance or mixture, such as infants, children, pregnant women, workers, or the elderly.”

*For environmental exposures tribes may represent a potentially exposed and susceptible subpopulations as required in the law.*





## Guidelines for Human Exposure Assessment

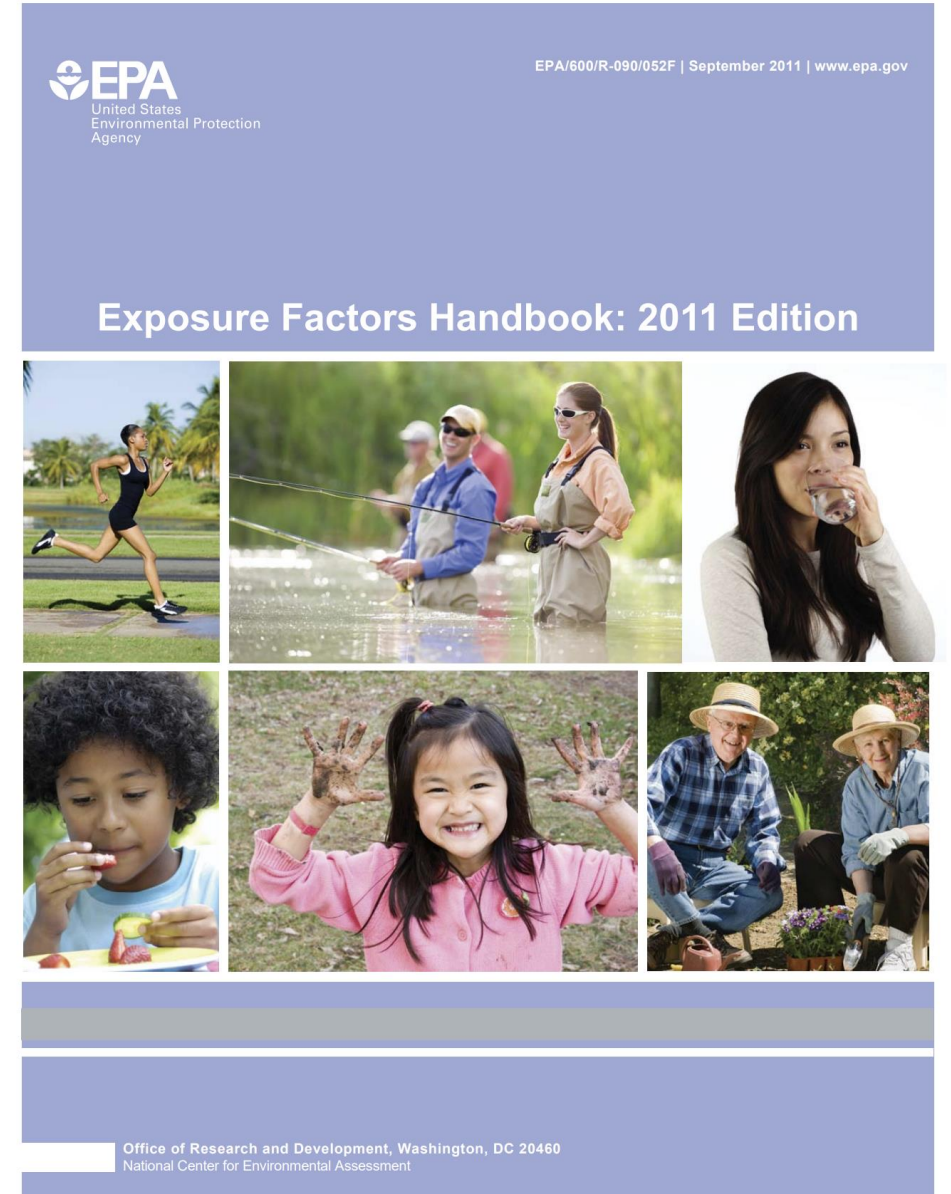


# Chapter 4: Consideration of Life Stages, Vulnerable Groups, and Populations of Concern in Exposure Assessments

- Assessments involving potentially vulnerable populations can consider economic, public health and other factors along with environmental conditions.
- As appropriate, exposure assessors identify and characterize those conditions that lead to the highest agent intensities and resulting exposures and those situations that lead to exposure for the most susceptible receptors (U.S. EPA 2009a).
- Considering vulnerability and susceptibility when making risk management decisions is essential for **protecting not only the general population but also those populations at greatest risk** (U.S. EPA 1995b; U.S. EPA 2010b).


# Exposure Factors Handbook

- Several NTTC members have helped ORD with their Seafood Consumption project to ensure tribal consumption rates are accurately characterized.
- Fish consumption remains the only factor OPPT considers in risk evaluations.
- NTTC is hopeful that other tribal exposure will be considered for risk evaluations and the revisions of the handbook.



# NTTC Public Comments

- Since FY21, NTTC has submitted **20** highly technical comment letters to EPA.
- List of comment letters located at: <https://tribaltoxics.org/our-work/public-comments/>



Home   About Us   Our Work   Resources   TSCA

Meetings	<b>TSCA Risk Evaluations</b> <ul style="list-style-type: none"><li>• <a href="#">Comments on the Draft Proposed Principles of Cumulative Risk Assessment Under TSCA (April 2023)</a></li><li>• <a href="#">Comments on the Development of Tiered Data Reporting to Inform TSCA Prioritization, Risk Evaluation, and Risk Management (Aug 2021)</a></li><li>• <a href="#">Comments on the Draft Systematic Review Protocol Supporting TSCA Risk Evaluations for Chemical Substances (Sep 2022)</a></li><li>• <a href="#">Comments on Draft TSCA Screening Level Approach For Assessing Ambient Air and Water Exposures to Fenceline Communities (Feb 2022)</a></li><li>• <a href="#">Comments on Proposed Procedures for Chemical Risk Evaluations Under TSCA (Dec 2023)</a></li><li>• <a href="#">Comments on TSCA Rules for Chemical Risk Evaluations (March, 2017)</a></li><li>• <a href="#">Comments on Identifying Chemicals for Prioritization under TSCA (Nov, 2018)</a></li></ul> <b>First 10 high priority chemicals</b> <ul style="list-style-type: none"><li>• <a href="#">Comments on the Draft Supplement to the TSCA Risk Evaluation of 1,4 dioxane (Sep 2023)</a></li><li>• <a href="#">Comments on Asbestos Part II: Supplemental Evaluation Including Legacy Uses and Associated Disposals of Asbestos: Draft Scope For the Risk Evaluation to be Conducted Under TSCA (March 2022)</a></li><li>• <a href="#">Comments on the Draft Revision to TSCA Risk Determination of Cyclic Aliphatic Bromide Cluster (HBCD)</a></li></ul>
Presentations	
<b>Public Comments</b>	
Other Work	



# TSCA Section 21 Petition by Tribes to Prohibit the Manufacturing, Processing, Use, and Distribution of 6PPD in Tires



ASSISTANT ADMINISTRATOR FOR CHEMICAL SAFETY AND POLLUTION PREVENTION  
WASHINGTON, D.C. 20460

November 2, 2023



August 1, 2023

Michael S. Regan, Administrator  
U.S. Environmental Protection Agency  
1200 Pennsylvania Avenue, N.W.  
Washington, D.C. 20460  
Regan.Michael@epa.gov

**VIA EMAIL AND CERTIFIED U.S. MAIL RETURN RECEIPT REQUESTED**

**Re: Citizen Petition under TSCA Section 21 to Prohibit 6PPD in Tires**

Dear Administrator Regan:

On behalf of the Yurok Tribe, the Port Gamble S'Klallam Tribe, and the Puyallup Tribe of Indians we hereby petition the U.S. Environmental Protection Agency ("EPA") under Section 21 of the Toxic Substances Control Act ("TSCA"), 15 U.S.C. § 2620, to establish regulations prohibiting the manufacturing,<sup>1</sup> processing, use, and distribution of N-(1,3-Dimethylbutyl)-N'-phenyl-p-phenylenediamine ("6PPD"), CASRN 793-24-8, for and in tires under EPA's TSCA Section 6(a) authority, 15 U.S.C. § 2605(a), with such regulation to take effect as soon as practicable, in order to eliminate the unreasonable risk 6PPD in tires presents to the environment.

**Re: Petition ID No. 001845: Toxic Substances Control Act Section 21 Petition Regarding N-(1,3-Dimethylbutyl)-N'-phenyl-p-phenylenediamine (CASRN 793-24-8, aka 6PPD) in Tires - Final EPA Response to Petition**

The U.S. Environmental Protection Agency received your petition dated August 1, 2023, submitted on behalf of the Yurok Tribe, the Port Gamble S'Klallam Tribe, and the Puyallup Tribe of Indians, requesting that the EPA "establish regulations prohibiting the manufacturing, processing, use, and distribution of N-(1,3-Dimethylbutyl)-N'-phenyl-p-phenylenediamine, CASRN 793-24-8, for and in tires under the EPA's TSCA Section 6(a) authority, 15 U.S.C. 2605(a), with such regulation to take effect as soon as practicable, in order to eliminate the unreasonable risk 6PPD in tires presents to the environment."

...This letter is to advise you that the EPA grants the petition. Specifically, the EPA plans to in the coming months: (a) commence a proceeding through issuance of an advance notice of proposed rulemaking for 6PPD under TSCA Section 6; and (b) initiate additional data gathering activities under TSCA to address data needed to understand and characterize risk associated with 6PPD-quinone and potential risks associated with 6PPD.

...The EPA appreciates Tribal leadership on the 6PPD-quinone issue, and is committed to considering the interests (including treaty reserved rights) of the Tribal governments described in the petition. The agency intends to offer consultation to federally recognized Tribal governments in accordance with the EPA Policy on Consultation and Coordination with Indian Tribes.

Thank you for your continued interest in reducing exposure to 6PPD and 6PPD-quinone. If you have any questions relating to your petition or the EPA's guidelines for TSCA section 21 petitions, feel free to contact Thomas Groeneveld of my staff at (202) 566-1188 or [groeneveld.thomas@epa.gov](mailto:groeneveld.thomas@epa.gov).

Sincerely,

MICHAL  
FREEDHOFF

Digitally signed by MICHAL  
FREEDHOFF  
Date: 2023.11.02 14:54:45  
+0400'

# Lead Curriculum

- Partnering with tribal communities to host a series of free educational sessions on lead
  - EPA has worked closely with Turtle Mountain Band of Chippewa Indians to establish this curriculum
- Held over 100 free educational sessions
  - 60 Understanding Lead sessions
  - 42 Curriculum Train-the-Trainer sessions
- Upcoming Sessions:  
[epa.gov/lead/community-lead-awareness-sessions](https://epa.gov/lead/community-lead-awareness-sessions)





# Draft Considerations and Resources for Assessing Tribal Exposures in TSCA Risk Evaluations

- The purpose of the document is to assist exposure assessors in incorporating tribal exposures and tribal lifeways into exposure assessments under TSCA.

## Upcoming Webinar Dates

- Wednesday, November 6<sup>th</sup> at 2PM ET
- Thursday, November 7<sup>th</sup> at 2PM ET

## Point of Contact: **Irina Myers**

- Phone: (202) 564-8822
- Email: [myers.irina@epa.gov](mailto:myers.irina@epa.gov)

# Contact Information

- Kade Lenz  
[klenz@glitc.org](mailto:klenz@glitc.org); (715) 588-1019
- National Tribal Toxics Council  
[NTTC Home](http://tribaltoxics.org) (tribaltoxics.org)

**Time to Discuss!**

**Questions?**

**Comments?**



# Thank you for attending!

- **To sign up for more OEJECR updates send a blank email to: [join-epa-ej@lists.epa.gov](mailto:join-epa-ej@lists.epa.gov)**
- **For any questions/concerns, please contact Andy Bessler, OEJECR Tribal Stakeholder Coalition Coordination, at [bessler.andy@epa.gov](mailto:bessler.andy@epa.gov)**
- **To learn more about EPA's EJ work with Tribes and Indigenous Peoples, visit [this page!](#)**

