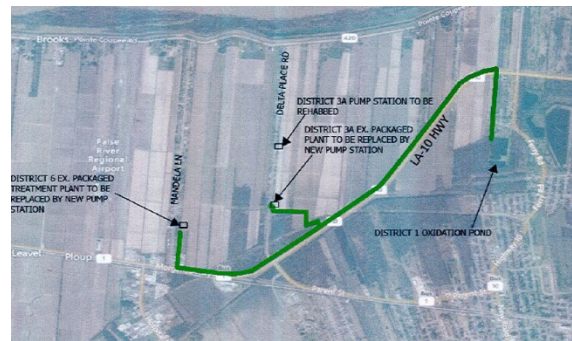


# POINTE COUPEE PARISH SEWER DISTRICT 1 CONSOLIDATION

**STATE PROGRAM:** Louisiana Department of Environmental Quality

**ASSISTANCE RECIPIENT:** Pointe Coupee Parish Sewer Board

**ASSISTANCE AMOUNT:** \$1.3M



## PROJECT DESCRIPTION

Pointe Coupee Parish Sewer Board, located in New Roads, Louisiana, operated two aging wastewater treatment plants that were failing to meet discharge limits and posed a risk to both the environment and public health. To address these issues, the Pointe Coupee Parish Sewer Board proposed to decommission the two facilities and replace them each with a new pump station and install a force main network to convey wastewater to an existing system in another district. This project also eliminates the problem of infiltration and inflow (I/I) into the system, which will reduce the loading on the system from other water sources.

To ensure adequate outreach, the Pointe Coupee Parish Sewerage District Consolidation Project engaged the community through a public hearing, worked with community leaders, and attended community events. These proactive engagements ensured the community had a voice in shaping the project's direction and outcomes, fostering a sense of ownership and support among community members. Supported by a \$1.3 million CWSRF loan, the \$4.2 million project not only improves water quality and protects public health but also supports economic development in the parish through the creation of jobs associated with the new construction.

To read more about this case study, please visit <https://www.epa.gov/system/files/documents/2024-04/cwsrf-piscs-2023-recognition-program.pdf>.