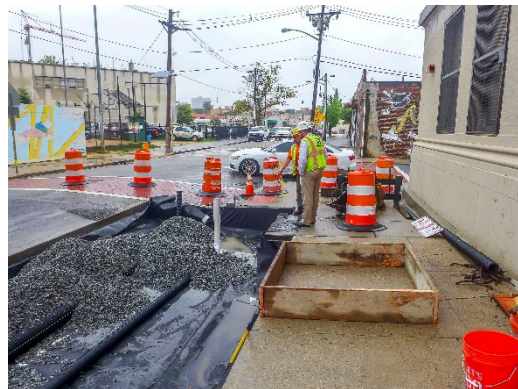


## JERSEY CITY MUNICIPAL UTILITIES AUTHORITY GREEN INFRASTRUCTURE

**STATE PROGRAM:** New Jersey Environmental  
Infrastructure Bank

**ASSISTANCE RECIPIENT:** Jersey City Municipal  
Utilities Authority

**ASSISTANCE AMOUNT:** \$6.6M



### PROJECT DESCRIPTION

The Jersey City Municipal Utilities Authority (JCMUA) received a \$6.6 million loan with \$1.3 million in principal forgiveness to implement a green infrastructure (GI) project designed to reduce flooding and increase resiliency to potential extreme weather events and sea level rise. Students at the Jersey City Public School No. 5 approached their science teacher after noticing that the area in front of their school flooded on a regular basis. The teacher reached out to the Rutgers Cooperative Extension Water Resources program (Rutgers CoopX) about conducting a GI evaluation at the school. In the meantime, the students calculated rainfall and analyzed how much GI would be necessary to solve the flooding issues. Rutgers CoopX then validated the data compiled by the students. The students recognized that their school wasn't the only area in Jersey City that flooded and pitched their plans to the City Council, which led to the development of a project at their school and at the JCMUA Administrative Building to intercept, treat, and filter stormwater runoff. Best management practices were installed that included replacing impermeable pavement with porous and permeable surfaces, relocating trees at the school, and planting rain gardens at the Administrative Building. This project demonstrates how community action and strategic planning enabled the JCMUA to invest in state-of-the-art resiliency measures to benefit their community for years to come.

To read more about this case study, please visit [https://www.epa.gov/sites/default/files/2019-11/documents/pisces\\_2019\\_compendium.pdf](https://www.epa.gov/sites/default/files/2019-11/documents/pisces_2019_compendium.pdf).