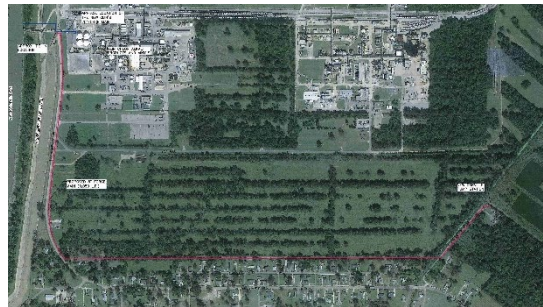


CARVILLE AND DELTA PROJECT

STATE PROGRAM: Louisiana Department of Environmental Quality

ASSISTANCE RECIPIENT: City of St. Gabriel

ASSISTANCE AMOUNT: \$3M



PROJECT DESCRIPTION

The City of St. Gabriel invested \$3 million from a CWSRF loan to improve their wastewater system and decrease the loading of an impaired water body, Bayou Manchac. The City will reroute two discharge flows away from streams that lead to the Bayou by partnering with existing facilities to save on infrastructure costs. This will include the construction of pump stations and associated force mains to carry the effluent from the wastewater treatment plant to the Mississippi River. Collaborating with a private company and a correctional center to use their existing infrastructure to take the flows from the two decommissioned discharge points, this partnership delivered significant cost savings in pipe construction and prevented potential utility conflicts or public disruption. The loan term of 20 years and an interest of 0.95 percent ensure this project will allow user fees in this disadvantaged area to be affordable while also decreasing the pollution loading on an impaired water body.

To read more about this case study, please visit https://www.epa.gov/sites/default/files/2021-02/documents/2020_pisces_compendium.pdf.