

Table 1
Community Continuous Air Monitoring Results
East Palestine Derailment Site
East Palestine, Columbiana County, Ohio

Monitoring Period: 10/24/2023 00:00 through 10/25/2023 09:15

Air Monitoring Instrument: Serial Number	Analyte	Screening Level ¹	Screening Level Exceeded?	8-hour Period Concentration Range	Average of All 8-hour Periods
8533230504	PM _{2.5} (mg/m ³)	0.035 (mg/m ³)	No	0.004 to 0.021	0.014
	PM ₁₀ (mg/m ³)	0.070 (mg/m ³)	No	0.005 to 0.024	0.016
8533183117	PM _{2.5} (mg/m ³)	0.035 (mg/m ³)	No	0.009 to 0.022	0.016
	PM ₁₀ (mg/m ³)	0.070 (mg/m ³)	No	0.010 to 0.025	0.018
W01A00002133	VOC (ppm)	0.5 (ppm)	No	0.00 to 0.00	0.00
W01B00002220	VOC (ppm)	0.5 (ppm)	No	0.00 to 0.00	0.00

Notes:

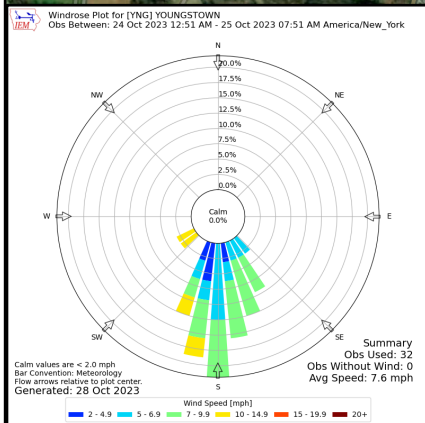
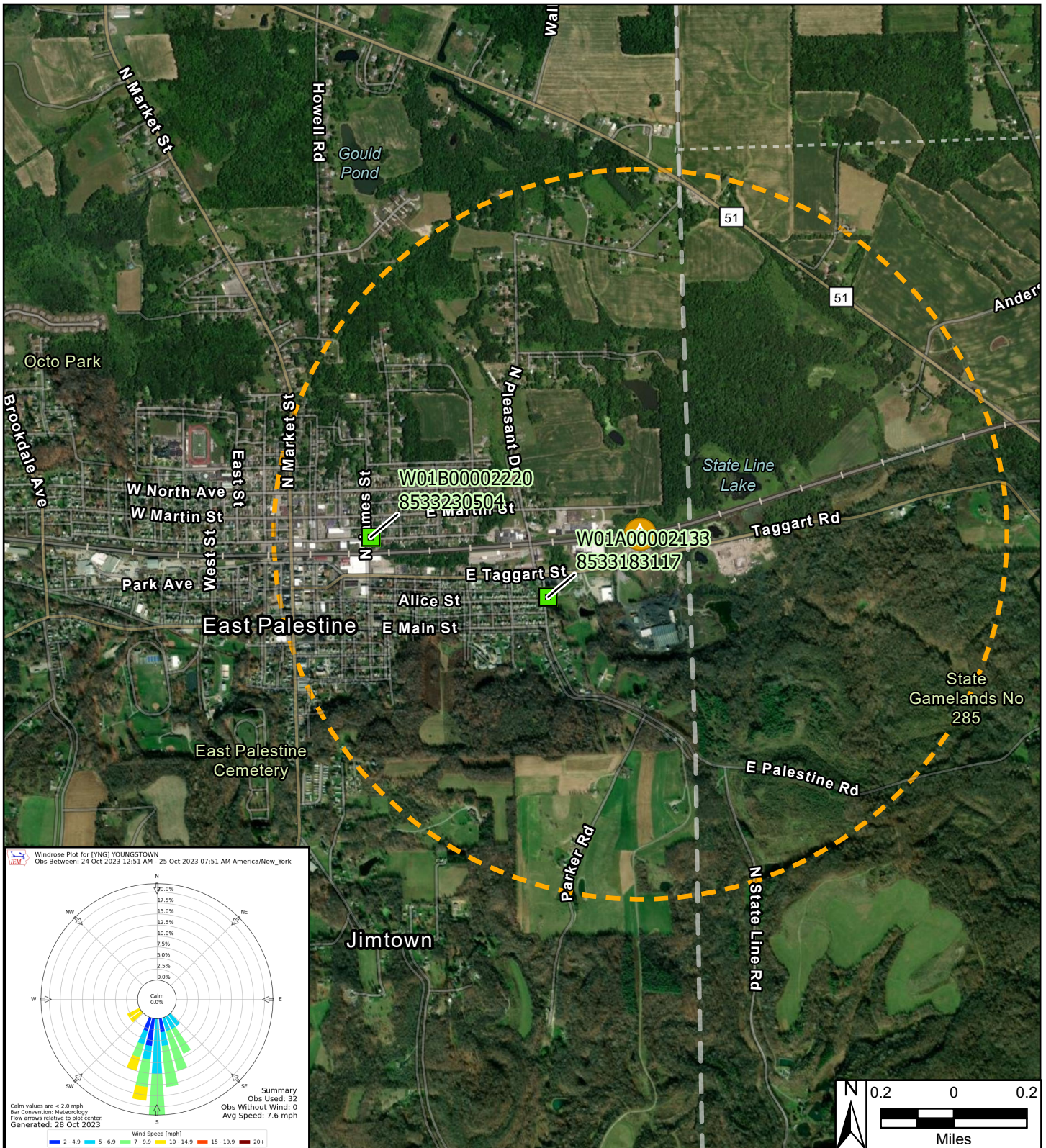
¹ Site-Specific Screening Levels stated in the Tetra Tech Air Monitoring and Sampling Plan. Screening levels were modified on March 16, 2023 to reflect updated operation procedures on when to apply mitigation methods to reduce dust. Action levels set by health departments have not changed.

Air monitoring measurements have been averaged over a 8-hour time period and summarized above.
Air monitoring is not performed during inclement weather conditions/rain and thunderstorms.

Abbreviations:

- mg/m³ - milligrams per meter cubed
- PM_{2.5} - Particulate Matter, diameter 2.5 micrometers and smaller
- PM₁₀ - Particulate Matter, diameter 10 micrometers and smaller
- ppm - Parts per million
- S/N - Serial number
- VOC - Volatile organic compound

We are in the process of ensuring this document is accessible to all audiences. If you need assistance accessing this document, or any materials on the EPA East Palestine, Ohio emergency response webpages, please contact the Region 5 Public Information Officer on-call r5_eastpalestine@epa.gov



- Legend**
- Continuous Air Monitoring Locations with DustTrak
 - Continuous Air Monitoring Locations
 - One Mile Radius
 - ▲ Derailment Location

East Palestine Derailment ER Site
 East Palestine, Columbiana County, OH 44413

Figure 1
Continuous Air Monitoring Community Stations



Prepared For: EPA

Prepared By: Tetra Tech Inc.