

Table 1
Community Roving Air Monitoring Results Summary Table
East Palestine Derailment Emergency Response
East Palestine, Ohio
Monitoring Period: 07/15/2023 07:44 to 07/15/2023 16:55

Location	Date/Time	VOC (ppm)	PM _{2.5} (mg/m ³) ¹	PM ₁₀ (mg/m ³) ¹
		Screening Levels		
		0.5 ppm	0.035 mg/m ³	0.070 mg/m ³
PCR-N-03	7/15/2023 7:52	0	0.025	0.033
	7/15/2023 10:07	0	0.016	0.017
	7/15/2023 13:15	0	0.017	0.017
	7/15/2023 15:13	0	0.02	0.021
PCR-N-04	7/15/2023 8:21	0	0.042	0.076
	7/15/2023 10:37	0	0.022	0.027
	7/15/2023 13:48	0	0.019	0.02
	7/15/2023 15:45	0	0.016	0.017
PCR-N-05	7/15/2023 8:26	0	0.028	0.029
	7/15/2023 10:42	0	0.021	0.024
	7/15/2023 13:52	0	0.016	0.017
	7/15/2023 15:49	0	0.016	0.017
PCR-N-06	7/15/2023 8:14	0	0.023	0.025
	7/15/2023 10:30	0	0.017	0.018
	7/15/2023 13:41	0	0.017	0.018
	7/15/2023 15:36	0	0.017	0.018
PCR-N-07	7/15/2023 7:56	0	0.031	0.036
	7/15/2023 10:10	0	0.016	0.016
	7/15/2023 13:19	0	0.017	0.018
	7/15/2023 15:17	0	0.016	0.016
PCR-N-08	7/15/2023 8:00	0	0.031	0.044
	7/15/2023 10:16	0	0.016	0.017
	7/15/2023 13:23	0	0.018	0.019
	7/15/2023 15:20	0	0.017	0.019
PCR-N-09	7/15/2023 8:05	0	0.027	0.035
	7/15/2023 10:20	0	0.017	0.019
	7/15/2023 13:31	0	0.018	0.019
	7/15/2023 15:25	0	0.025	0.036
PCR-N-10	7/15/2023 8:09	0	0.027	0.033
	7/15/2023 10:25	0	0.017	0.018
	7/15/2023 13:37	0	0.017	0.018
	7/15/2023 15:30	0	0.016	0.018
PCR-N-11	7/15/2023 8:38	0	0.023	0.026
	7/15/2023 10:47	0	0.017	0.018
	7/15/2023 13:57	0	0.015	0.017
	7/15/2023 15:55	0	0.017	0.019
PCR-N-12	7/15/2023 8:44	0	0.021	0.022
	7/15/2023 10:57	0	0.016	0.017
	7/15/2023 14:03	0	0.015	0.017
	7/15/2023 16:01	0	0.022	0.034

We are in the process of ensuring this document is accessible to all audiences. If you need assistance accessing this document, or any materials on the EPA East Palestine, Ohio emergency response webpages, please contact the Region 5 Public Information Officer on-call r5_eastpalestine@epa.gov

Table 1
Community Roving Air Monitoring Results Summary Table
East Palestine Derailment Emergency Response
East Palestine, Ohio
Monitoring Period: 07/15/2023 07:44 to 07/15/2023 16:55

Location	Date/Time	VOC (ppm)	PM _{2.5} (mg/m ³) ¹	PM ₁₀ (mg/m ³) ¹
		Screening Levels		
		0.5 ppm	0.035 mg/m ³	0.070 mg/m ³
PCR-N-13	7/15/2023 8:17	0	0.023	0.027
	7/15/2023 10:35	0	0.02	0.025
	7/15/2023 13:44	0	0.015	0.016
	7/15/2023 15:40	0	0.017	0.019
PCR-S-01	7/15/2023 9:42	0	0.018	0.02
	7/15/2023 11:45	0	0.017	0.02
	7/15/2023 14:58	0	0.015	0.016
	7/15/2023 16:55	0	0.036	0.071
PCR-S-04	7/15/2023 9:38	0	0.018	0.02
	7/15/2023 11:41	0	0.015	0.016
	7/15/2023 14:50	0	0.015	0.016
	7/15/2023 16:50	0	0.019	0.02
PCR-S-05	7/15/2023 9:30	0	0.018	0.019
	7/15/2023 11:34	0	0.016	0.019
	7/15/2023 14:42	0	0.016	0.017
	7/15/2023 16:45	0	0.019	0.022
PCR-S-06	7/15/2023 9:24	0	0.03	0.041
	7/15/2023 11:29	0	0.025	0.043
	7/15/2023 14:35	0	0.024	0.04
	7/15/2023 16:38	0	0.023	0.031
PCR-S-07	7/15/2023 9:17	0	0.02	0.022
	7/15/2023 11:25	0	0.017	0.021
	7/15/2023 14:31	0	0.017	0.019
	7/15/2023 16:34	0	0.017	0.019
PCR-S-08	7/15/2023 8:53	0	0.026	0.036
	7/15/2023 11:02	0	0.017	0.021
	7/15/2023 14:10	0	0.015	0.016
	7/15/2023 16:10	0	0.017	0.02
PCR-S-09	7/15/2023 9:34	0	0.026	0.028
	7/15/2023 11:38	0	0.016	0.017
	7/15/2023 14:46	0	0.016	0.018
	7/15/2023 16:48	0	0.02	0.021
PCR-S-10	7/15/2023 7:44	0	0.021	0.024
	7/15/2023 9:51	0	0.018	0.019
	7/15/2023 13:11	0	0.017	0.017
	7/15/2023 15:03	0	0.015	0.016
PCR-S-14	7/15/2023 9:00	0	0.021	0.023
	7/15/2023 11:11	0	0.015	0.016
	7/15/2023 14:17	0	0.016	0.018
	7/15/2023 16:15	0	0.017	0.019

Table 1
 Community Roving Air Monitoring Results Summary Table
 East Palestine Derailment Emergency Response
 East Palestine, Ohio
 Monitoring Period: 07/15/2023 07:44 to 07/15/2023 16:55

Location	Date/Time	VOC (ppm)	PM _{2.5} (mg/m ³) ¹	PM ₁₀ (mg/m ³) ¹
		Screening Levels		
		0.5 ppm	0.035 mg/m ³	0.070 mg/m ³
PCR-S-15	7/15/2023 9:05	0	0.038	0.059
	7/15/2023 11:15	0	0.02	0.027
	7/15/2023 14:21	0	0.032	0.05
	7/15/2023 16:24	0	0.017	0.019
PCR-S-16	7/15/2023 9:07	0	0.019	0.021
	7/15/2023 11:19	0	0.022	0.027
	7/15/2023 14:28	0	0.022	0.033
	7/15/2023 16:28	0	0.021	0.026

Notes:

Highlighted indicate detections above screening levels

1 - Site-Specific Public Health Screening Levels for particulate matter are based on 24-hour time-weighted averages (TWAs). Fixed discrete monitoring readings are discrete readings, and so do not represent conditions over a full 24-hour period. Screening levels were modified on March 16, 2023 to reflect updated operation procedures on when to apply mitigation methods to reduce dust. Action levels set by health departments have not changed.

mg/m³ - milligrams per cubic meter

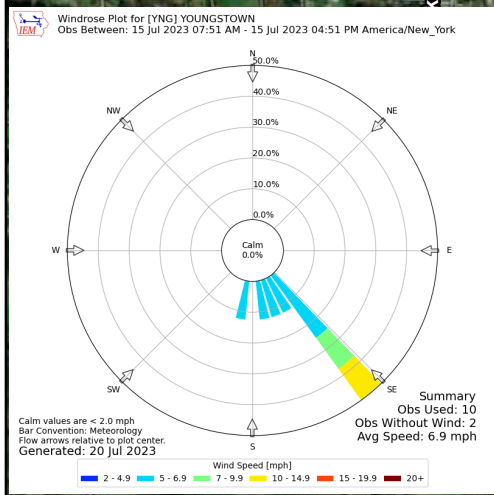
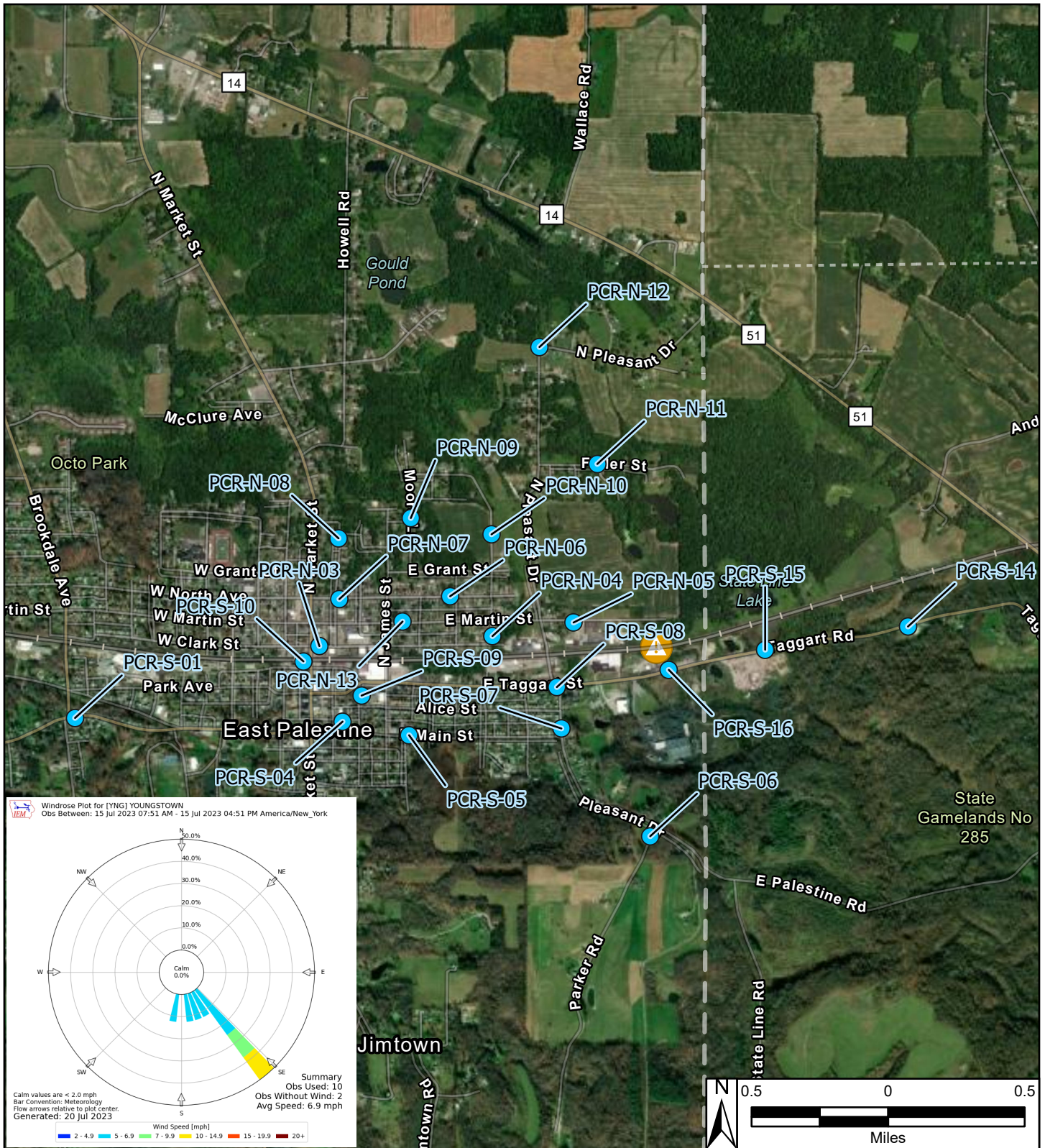
PM_{2.5} - particles that are 2.5 micrometers and smaller

PM₁₀ - particles that are 10 micrometers and smaller

ppm - parts per million

TWA - time-weighted average

VOC - volatile organic compounds



- Legend**
- Roaming Air Monitoring Locations
 - ⚠ Derailment Location
 - One Mile Radius

East Palestine Derailment ER Site
 East Palestine, Columbiana County, OH 44413

Figure 1
Roaming Air Monitoring Community Locations



Prepared For: EPA

Prepared By: Tetra Tech Inc.