

Table 1
Community Roving Air Monitoring Results Summary Table
East Palestine Derailment Emergency Response
East Palestine, Ohio
Monitoring Period: 03/15/2023 08:45 to 03/15/2023 12:12

We are in the process of ensuring this document is accessible to all audiences. If you need assistance accessing this document, or any materials on the EPA East Palestine, Ohio emergency response webpages, please contact the Region 5 Public Information Officer on-call r5_eastpalestine@epa.gov

Location	Date/Time	LEL (%)	CO (ppm)	H ₂ S (ppm)	VOC (ppm)	PM _{2.5} (mg/m ³) ¹	PM ₁₀ (mg/m ³) ¹	HCN (ppm)*
		Screening Levels						
		5%	9 ppm	0.1 ppm	0.5 ppm	0.035 mg/m ³	0.035 mg/m ³	1 ppm
PCR-N-03	3/15/2023 8:45	0	0	0	0	0.015	0.016	0
	3/15/2023 11:01	0	0	0	0	0.007	0.007	0
PCR-N-04	3/15/2023 9:17	0	0	0	0	0.009	0.01	0
	3/15/2023 11:35	0	0	0	0	0.005	0.006	0
PCR-N-05	3/15/2023 9:22	0	0	0	0	0.011	0.011	0
	3/15/2023 11:39	0	0	0	0	0.006	0.006	0
PCR-N-06	3/15/2023 9:06	0	0	0	0	0.012	0.013	0
	3/15/2023 11:27	0	0	0	0		0.006	0
PCR-N-07	3/15/2023 8:47	0	0	0	0	0.012	0.012	0
	3/15/2023 11:05	0	0	0	0	0.008	0.009	0
PCR-N-08	3/15/2023 8:52	0	0	0	0	0.009	0.01	0
	3/15/2023 11:09	0	0	0	0	0.008	0.01	0
PCR-N-09	3/15/2023 8:57	0	0	0	0	0.009	0.009	0
	3/15/2023 11:15	0	0	0	0	0.006	0.007	0
PCR-N-10	3/15/2023 9:01	0	0	0	0	0.007	0.007	0
	3/15/2023 11:21	0	0	0	0	0.006	0.006	0
PCR-N-11	3/15/2023 9:31	0	0	0	0	0.01	0.01	0
	3/15/2023 11:48	0	0	0	0	0.005	0.005	0
PCR-N-12	3/15/2023 9:27	0	0	0	0	0.008	0.009	0
	3/15/2023 11:44	0	0	0	0	0.005	0.005	0
PCR-N-13	3/15/2023 9:12	0	0	0	0	0.014	0.017	0
	3/15/2023 11:31	0	0	0	0	0.006	0.007	0
PCR-S-01	3/15/2023 12:37	0	0	0	0	0.007	0.008	0
PCR-S-04	3/15/2023 10:15	0	0	0	0	0.006	0.006	0
	3/15/2023 12:28	0	0	0	0	0.009	0.01	0
PCR-S-05	3/15/2023 10:12	0	0	0	0	0.006	0.008	0
	3/15/2023 12:26	0	0	0	0	0.006	0.007	0
PCR-S-06	3/15/2023 10:07	0	0	0	0	0.005	0.006	0
	3/15/2023 12:20	0	0	0	0	0.005	0.005	0

Table 1
Community Roving Air Monitoring Results Summary Table
East Palestine Derailment Emergency Response
East Palestine, Ohio
Monitoring Period: 03/15/2023 08:45 to 03/15/2023 12:12

Location	Date/Time	LEL (%)	CO (ppm)	H ₂ S (ppm)	VOC (ppm)	PM _{2.5} (mg/m ³) ¹	PM ₁₀ (mg/m ³) ¹	HCN (ppm)*
		Screening Levels						
		5%	9 ppm	0.1 ppm	0.5 ppm	0.035 mg/m ³	0.035 mg/m ³	1 ppm
PCR-S-07	3/15/2023 10:03	0	0	0	0	0.005	0.005	0
	3/15/2023 12:16	0	0	0	0	0.006	0.007	0
PCR-S-08	3/15/2023 9:46	0	0	0	0	0.01	0.013	0
	3/15/2023 11:56	0	0	0	0	0.006	0.006	0
PCR-S-09	3/15/2023 10:20	0	0	0	0	0.004	0.007	0
	3/15/2023 12:32	0	0	0	0	0.008	0.013	0
PCR-S-10	3/15/2023 8:33	0	0	0	0	0.014	0.014	0
	3/15/2023 10:55	0	0	0	0	0.006	0.007	0
PCR-S-14	3/15/2023 9:51	0	0	0	0	0.009	0.01	0
	3/15/2023 12:03	0	0	0	0	0.006	0.006	0
PCR-S-15	3/15/2023 9:55	0	0	0	0	0.005	0.005	0
	3/15/2023 12:07	0	0	0	0	0.026	0.03	0
PCR-S-16	3/15/2023 9:59	0	0	0	0	0.007	0.009	0
	3/15/2023 12:12	0	0	0	0	0.016	0.019	0

Table 1
Community Roving Air Monitoring Results Summary Table
East Palestine Derailment Emergency Response
East Palestine, Ohio
Monitoring Period: 03/15/2023 08:45 to 03/15/2023 12:12

Notes:

Highlighted indicate detections above screening levels

Grey cells indicate no measurement was collected for that specific parameter

1 - Site-Specific Public Health Screening Levels for particulate matter are based on 24-hour time-weighted averages (TWAs). Fixed discrete monitoring readings are discrete readings, and so do not represent conditions over a full 24-hour period.

* - the screening level is the instrument's limit of detection.

% - percent

CO - carbon monoxide

H₂S - hydrogen sulfide

HCN - hydrogen cyanide

LEL - lower explosive limit

mg/m³ - milligrams per cubic meter

PM_{2.5} - particles that are 2.5 micrometers and smaller

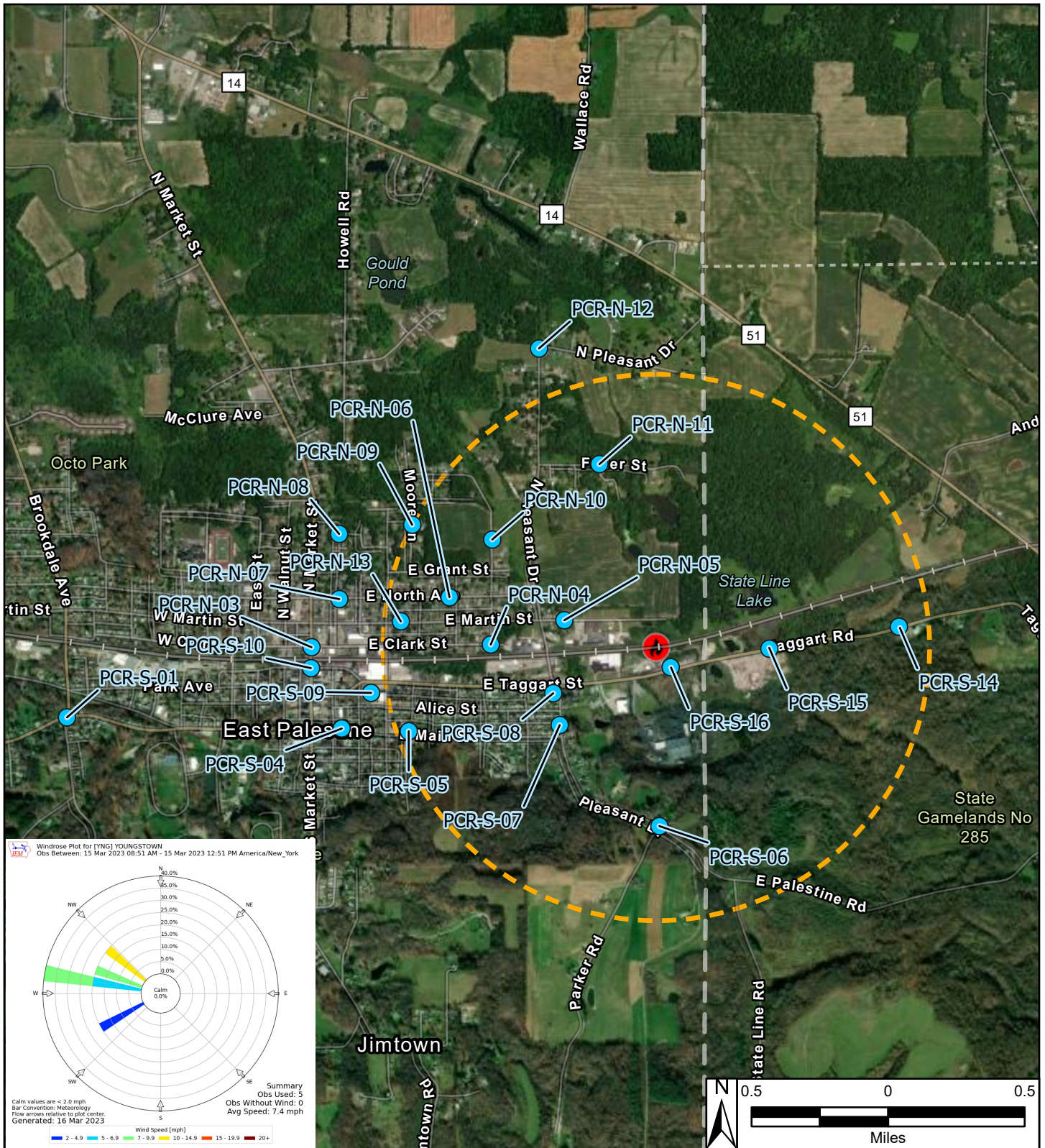
PM₁₀ - particles that are 10 micrometers and smaller

ppm - parts per million

TWA - time-weighted average

VOC - volatile organic compounds

We are in the process of ensuring this document is accessible to all audiences. If you need assistance accessing this document, or any materials on the EPA East Palestine, Ohio emergency response webpages, please contact the Region 5 Public Information Officer on-call r5_eastpalestine@epa.gov



Reference Map



Legend

- Derailment Location
- One Mile Radius
- Roaming Air Monitoring Locations

East Palestine Derailment ER Site
 East Palestine, Columbiana County, OH 44413

Figure 1
Roaming Air Monitoring Community Locations



Prepared For: EPA

Prepared By: Tetra Tech Inc.