

## APPENDIX A: Options for Identifying Sites in Underserved Communities

Cooperative agreement recipients (CARs) may identify a community as “underserved” by using one or more of the approaches or geospatial mapping tools below:

### 1. EJScreen

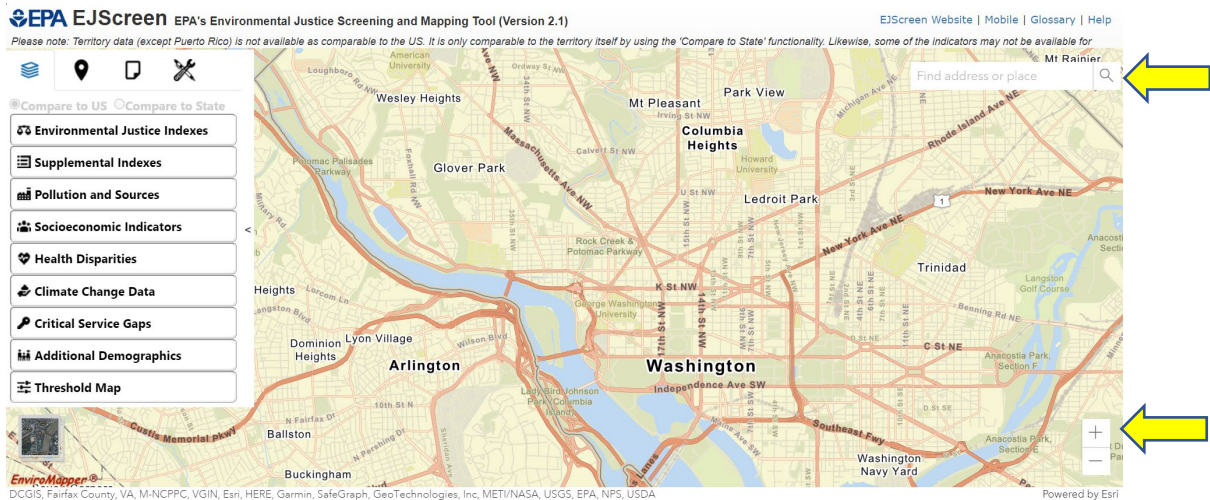
EPA’s [EJScreen](#) is an environmental justice mapping and screening tool that provides EPA with a nationally consistent dataset and approach for combining environmental and demographic indicators. EJScreen users choose a geographic area; the tool then provides demographic and environmental information for that area. All of the EJScreen indicators are publicly available data. EJScreen provides a way to display this information and includes a method for combining environmental and demographic indicators into EJ indexes.

The information below explains how CARs can access reports for a geographic location or area using EJScreen. A brief video demonstration that walks through these steps is also available on [EPA’s Brownfields Program website](#). Visit <https://www.epa.gov/ejscreen> to access EPA’s EJScreen Tool and for additional information on EJSCREEN, general guidance on how to use the tool, understanding results, technical information, and more resources.

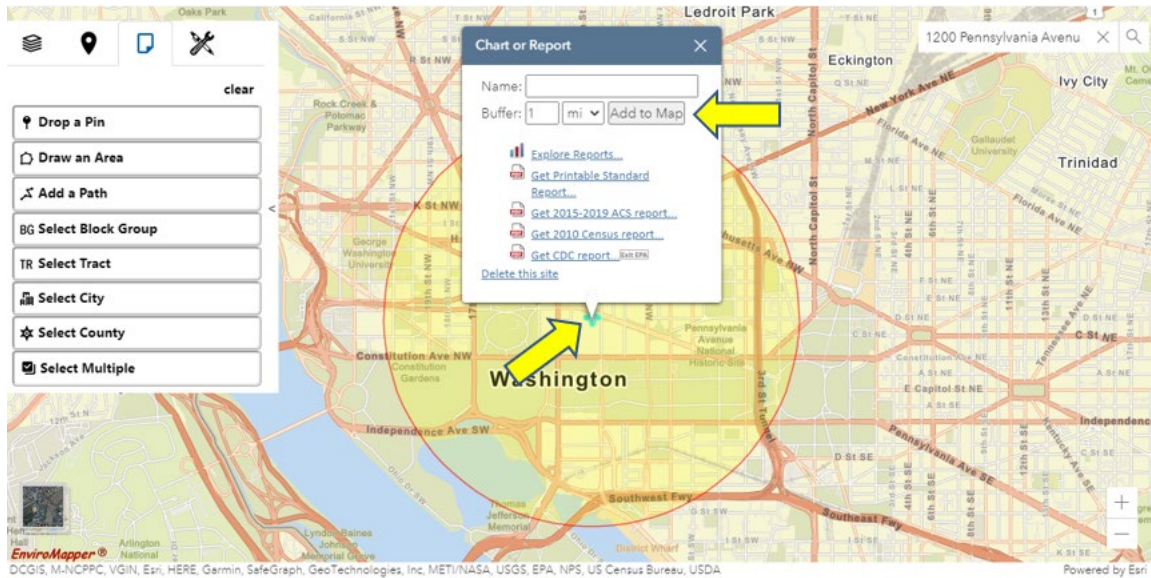
CARs can also contact their EPA [Technical Assistance to Brownfields Communities \(TAB\) Provider](#) for guidance on using EJScreen.

#### Instructions:

- Use the search bar at the top right to find an address or place on the map. Use the plus (+) symbol in the bottom right to zoom in, or the minus (-) symbol to zoom out.



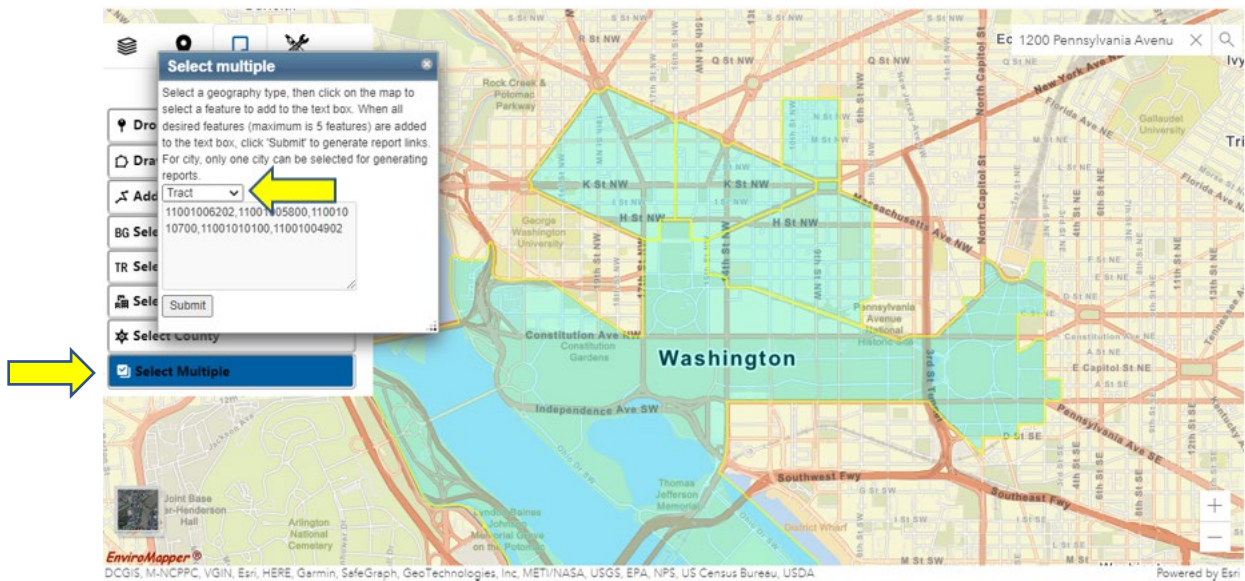
- If you have an address for a site, type or paste the address in the search bar. Click on the plus (+) symbol that appears to mark the address you searched on the map. Click “Add to Map” to add an area buffer. The default is set to 1 mile.



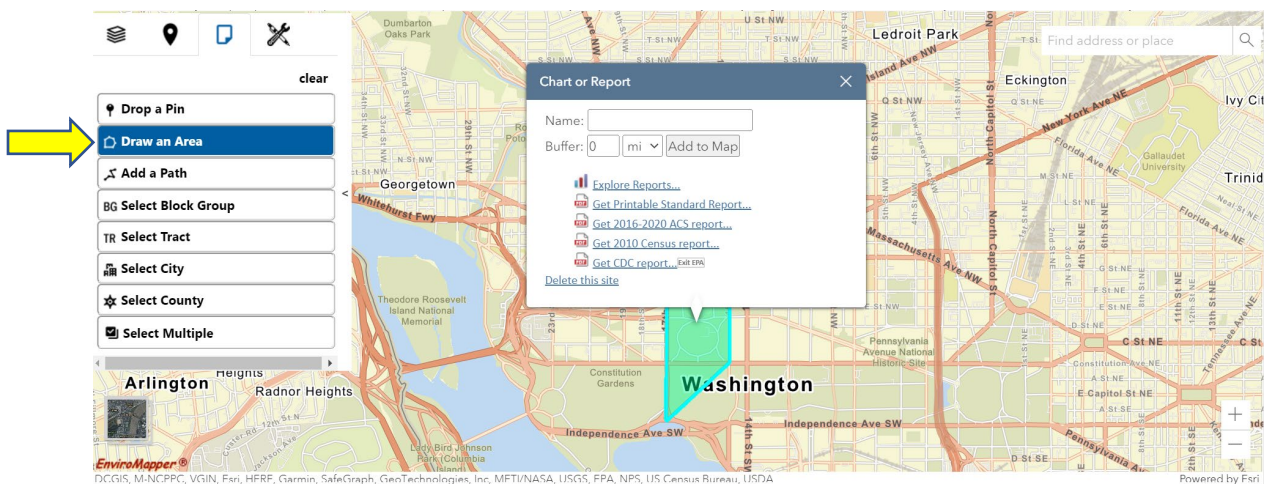
- Another way to select an area is to click “Reports” on the left menu and click on the geography type you wish to select by (Draw an Area, Select Block Group, Select Tract, Select City, Select County, or Select Multiple), then click on the map.



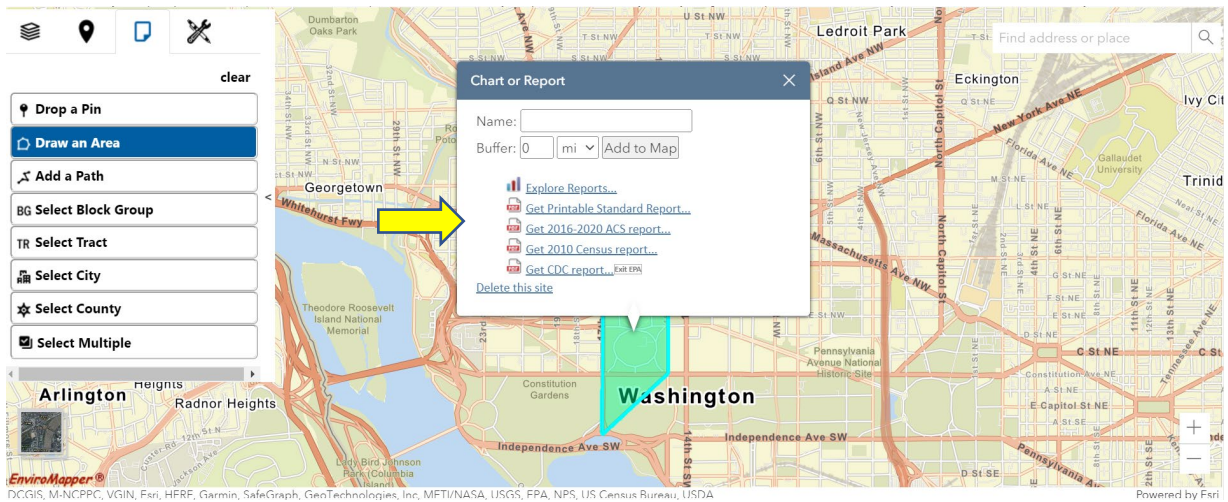
- If you want to select multiple census block groups, census tracts, or counties within the same state, click “Select Multiple.” In the Select multiple pop-up that appears, choose your desired geography type from the drop down menu, and click up to five areas on the map.
- In the example below, census tract is selected from the drop down menu and the associated census tract numbers for the areas that were clicked on the map auto-populate in the Select multiple pop-up. When you click “Submit,” the Chart or Report pop-up will appear.



- Alternatively, you can select “Draw an Area,” then click on the map to draw a shape to encompass your desired area.





- Once you have selected the desired area using any of the methods described above, in the Chart or Report pop-up, select “Get Printable Standard Report...” for a summary of the Environmental Justice Indices, Pollutions and Sources, and Socioeconomic Indicators for your selected area. You can also click on “Explore Reports...”, “Get 2016-2020 ACS report...”, “Get 2010 Census report...”, and “Get CDC report...” for more statistics based on your selected area.



- You may include any information from these reports to help characterize and describe the communities where your sites are located.

Save as PDF

**EJScreen Report (Version 2.1)**  
 the User Specified Area  
**DISTRICT OF COLUMBIA, EPA Region 3**  
 Approximate Population: 22  
 Input Area (sq. miles): 0.22

Selected Variables	Percentile in State	Percentile in USA
<b>Environmental Justice Indexes</b>		
EJ Index for Particulate Matter 2.5	16	34
EJ Index for Ozone	22	38
EJ Index for Diesel Particulate Matter*	45	52
EJ Index for Air Toxics Cancer Risk*	44	37
EJ Index for Air Toxics Respiratory HI*	32	39
EJ Index for Traffic Proximity	40	50
EJ Index for Lead Paint	13	40
EJ Index for Superfund Proximity	31	50
EJ Index for RMP Facility Proximity	31	40
EJ Index for Hazardous Waste Proximity	43	52
EJ Index for Underground Storage Tanks	30	52
EJ Index for Wastewater Discharge	19	29

EJ Index for the Selected Area Compared to All People's Blockgroups in the State/US

## 2. Climate and Economic Justice Screening Tool (CEJST)

[CEJST](#) was developed by the Council on Environmental Quality (CEQ) to help Federal agencies identify “disadvantaged communities” that are marginalized, underserved, and overburdened by pollution.

## 3. A State’s own definition of a “disadvantaged” or “underserved” community

This may or may not include the use of a State geospatial mapping tool. The CAR should identify where the applicable definition is located (e.g., on the State’s website).

## 4. Dataset(s) or geospatial mapping tool(s) that represent one or more of the following variables:

- Low income, high and/or persistent poverty;
- High unemployment and underemployment;
- Racial and ethnic residential segregation, particularly where the segregation stems from discrimination by government entities;
- Linguistic isolation;
- High housing cost burden and substandard housing;
- Distressed neighborhoods;
- High transportation cost burden and/or low transportation access;

- Disproportionate environmental stressor burden and high cumulative impacts;
- Limited water and sanitation access and affordability;
- Disproportionate impacts from climate change;
- High energy cost burden and low energy access;
- Jobs lost through the energy transition;
- Access to healthcare; and
- Geographic areas within Tribal jurisdictions.

The variables above are from the [Interim Implementation Guidance for the Justice40 Initiative](#) provided to federal agencies on July 20, 2021 by the Office of Management and Budget (OMB), CEQ, and the National Climate Advisor.