

# Toxics Release Inventory (TRI) Data & the Massachusetts Toxics Use Reduction Act (TURA)

---



Tiffany Skogstrom, MPH  
Director, Massachusetts Office of Technical Assistance

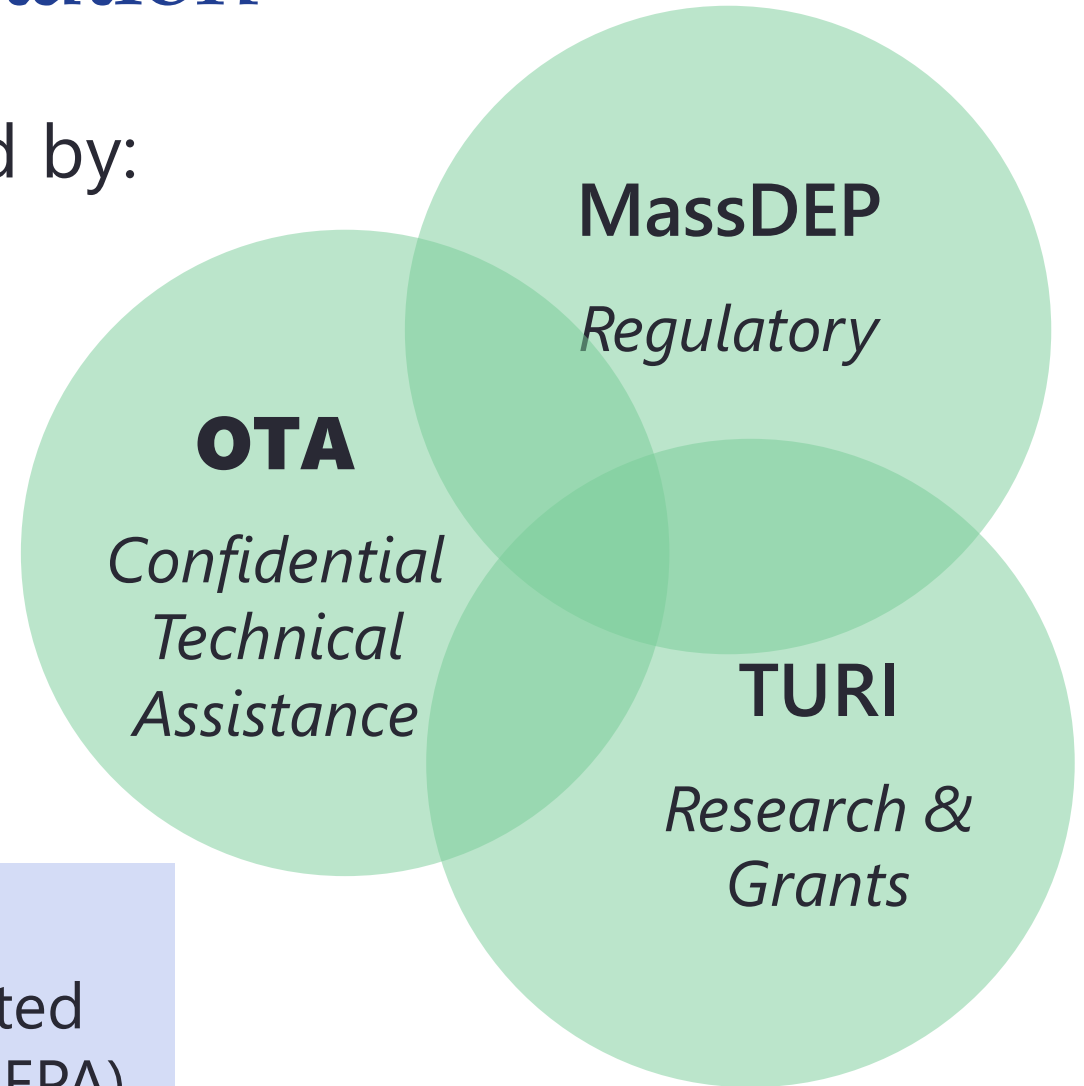
September 21, 2022

# TURA Program Implementation

The TURA Program is co-implemented by:

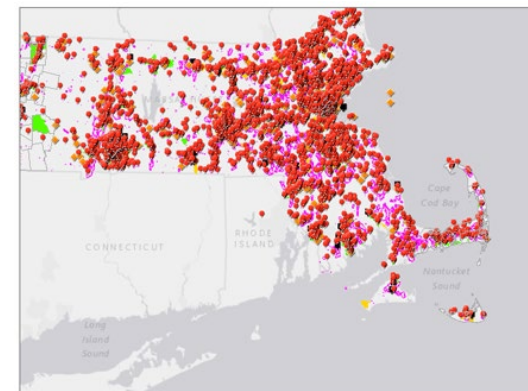
- The Massachusetts Department of Environmental Protection (MassDEP)
- The Massachusetts Office of Technical Assistance (OTA)
- The Toxics Use Reduction Institute at UMass Lowell

TURA is a state law, not a federal law. OTA, DEP, and TURI are not part of the United States Environmental Protection Agency (US EPA).

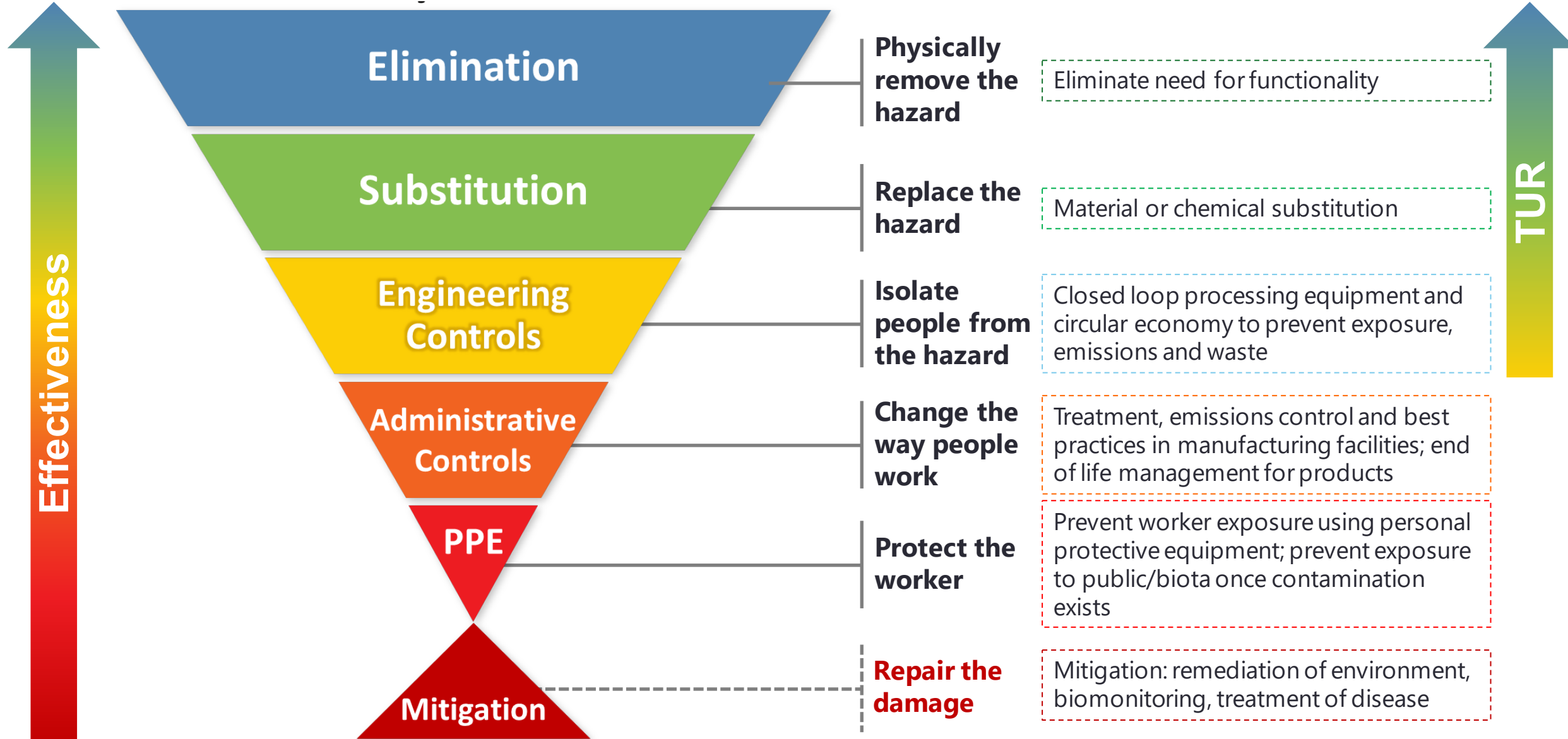


# Office of Technical Assistance (OTA)

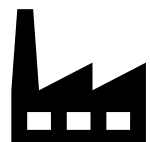
- **Non-regulatory agency** within Executive Office of Energy and Environmental Affairs (EOEEA)
- Staff of chemists, engineers, public health professionals with industry experience & understanding of
  - Regulations
  - Bottom line
  - How to implement changes
- Provides **confidential** onsite technical and compliance assistance to manufacturers, businesses, and institutions
- All OTA services are available **free of charge** to any Massachusetts toxics user



# Hierarchy of Controls and Toxics Use Reduction



# Toxics Use Reduction Act (TURA) of 1989



## Who reports?

- Massachusetts manufacturers who:
  - Operate under certain Standard Industrial Classification (SIC) codes
  - Have > 10 employees
  - Manufacture or process  $\geq 25,000$ lbs (or otherwise use  $\geq 10,000$ lbs) of listed substances
- This covers a little over 400 Massachusetts facilities



## What TURA requires

- Report to the state
- Pay a fee
- Create a Toxics Use Reduction Plan every two years

TURA does not prohibit companies from using listed chemicals.

# Some Differences between TURA & TRI

TURA	TRI
State regulation	Federal regulation
Focus on source reduction	Focus on releases/emissions
Report annually to MassDEP on process/manufacture/otherwise use/byproduct	Report annually to US EPA on releases to air/water/soil
More substances: Includes substances under both Emergency Planning and Community Right-to-Know Act (EPCRA) (which includes TRI) and Comprehensive Environmental Response, Compensation, and Liability Act (CERCLA), as well as listings specific to TURA. 1708 total listed entries, including 60 categories (301 CMR 41)	Fewer substances: Current TRI toxic chemical list contains 775 individually listed chemicals and 33 chemical categories.
TUR planning every two years – plan summary sent to DEP	Tracks and shows pollution prevention (P2) efforts

# Chemical Safety & Climate Change Resiliency

---

# Extreme Weather

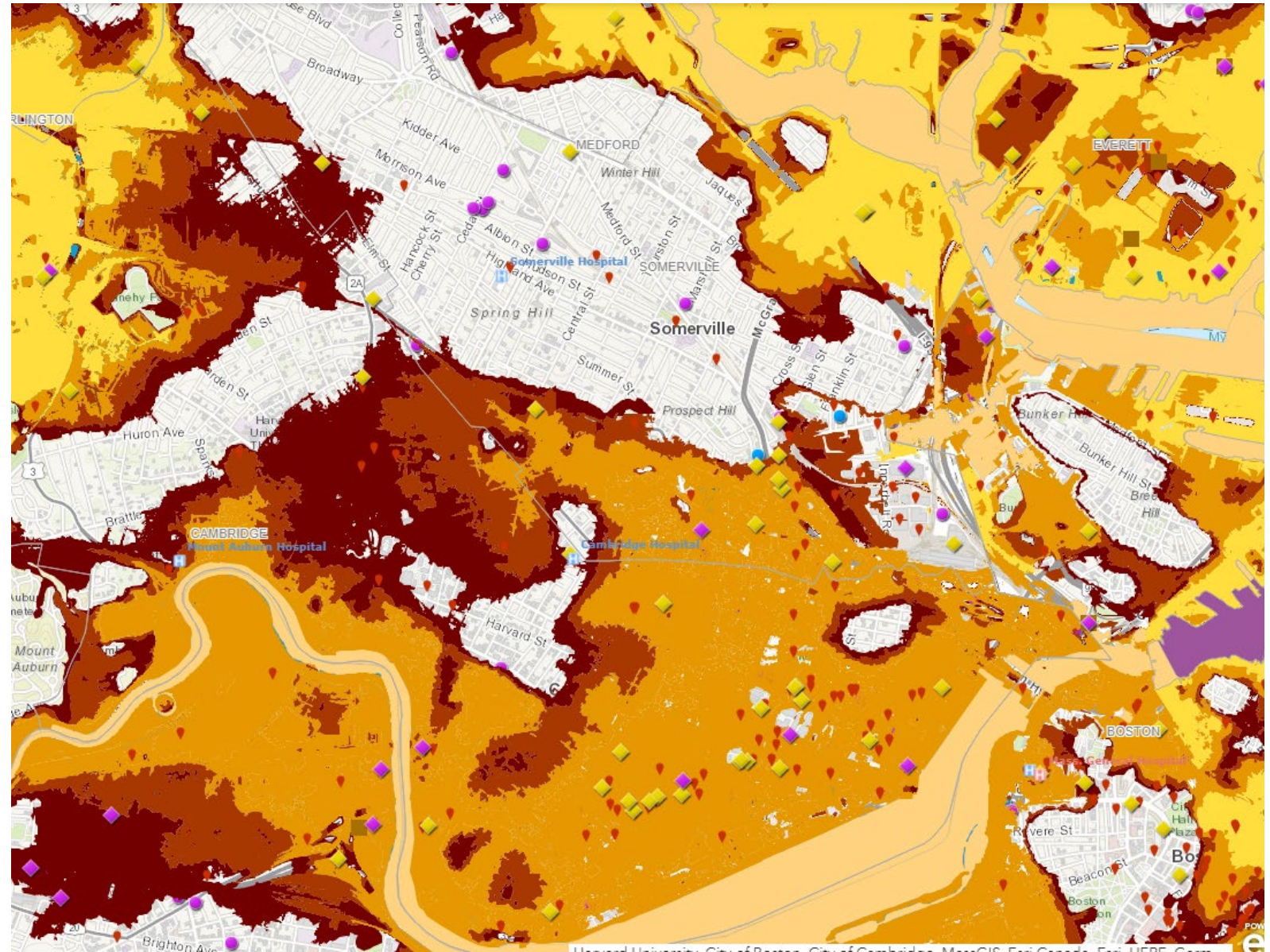
- Arkema Chemical Plant
- Hurricane caused loss of power and refrigeration, leading to explosion
  - Risk to workers
  - Risk to neighbors
  - Injured first responders





# Anticipating Worst-Case Scenarios

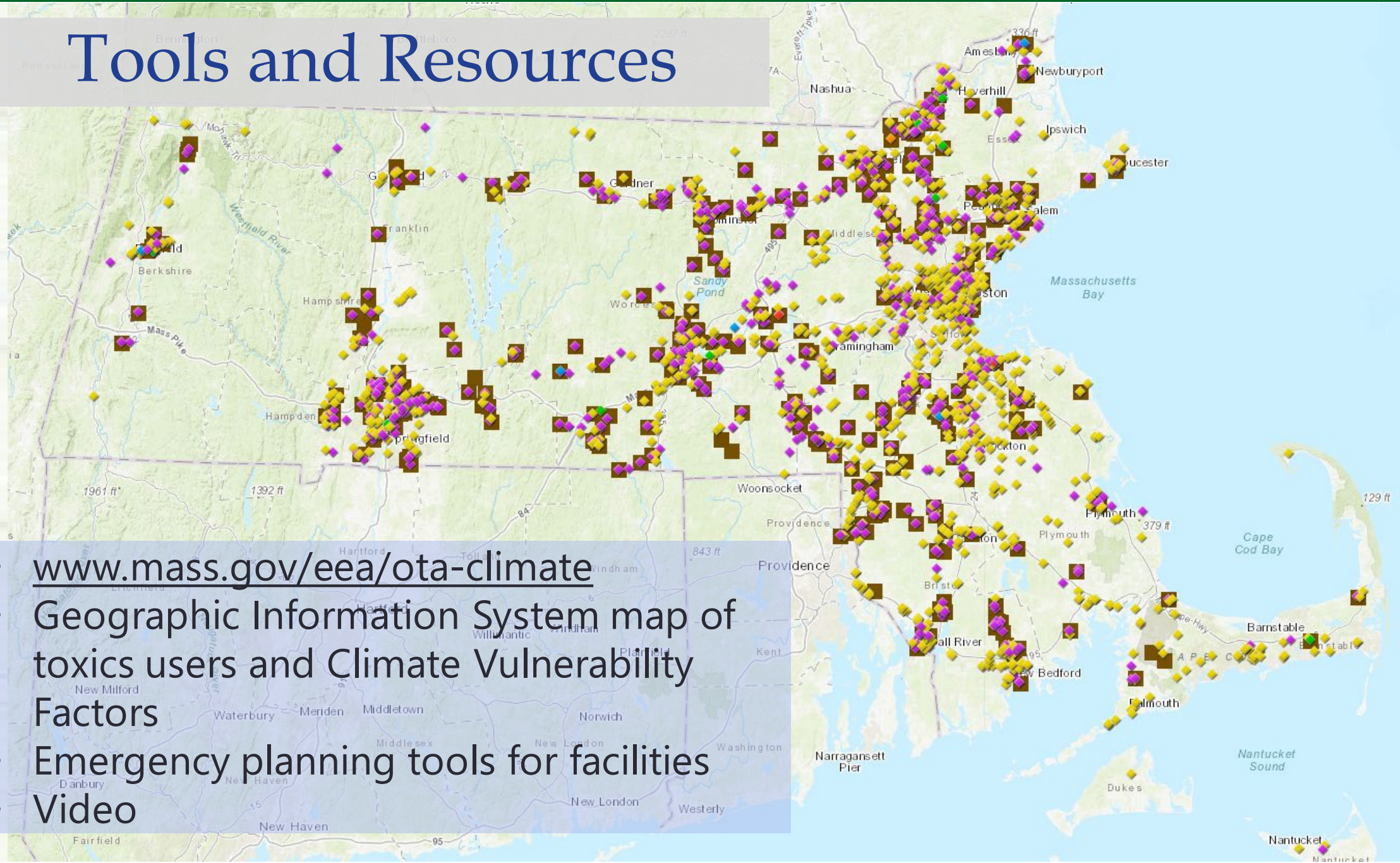
Federal Emergency  
Management Agency  
(FEMA) Flood and  
Hurricane Zones





# Tools and Resources


- [www.mass.gov/eea/ota-climate](http://www.mass.gov/eea/ota-climate)
- Geographic Information System map of toxics users and Climate Vulnerability Factors
- Emergency planning tools for facilities
- Video



# Toxics Release Inventory Toxics Tracker

[Use esta herramienta de búsqueda en español](#)

epa.gov/tri

 TRI Toxics Tracker
? How to Search

**Q** New Search

- [Map of TRI Facilities](#)
- [Demographic Profile](#)
- [Facilities Summary](#)
- [Releases](#)
- [Waste Managed](#)
- [Pollution Prevention](#)
- [Potential Risk](#)
- [Chemicals](#)
- [Open full version of TRI Toxics Tracker](#)
- [with more data and expanded capabilities.](#)
- [EJScreen](#)
- [EPA's environmental justice screening and mapping tool.](#)
- [Most Recent Reporting Year: 2020](#)

Search below to identify industrial facilities in your community that release chemicals into the air, water, and land. Learn what chemicals these facilities release, how these facilities are reducing releases, and potential health impacts of these releases.

To start, select **View Current Location** or select one of the search option tabs below.

Results will include TRI facilities that reported in the **most recent reporting year**.

Address
State, County, City or ZIP Code
Metro Area
Watershed
Tribal Land
TRI Facility Name

To select a county, city or ZIP Code, first select a state from the dropdown menu.

If a specific county, city or ZIP Code isn't displayed in the dropdown menus, it means that no facilities from that location reported to TRI during the most recent reporting year.

State ▾

County ▾

City ▾

ZIP Code ▾

**Q** View Search Results

✕ Clear Selection

**▶** Watch a short instructional video for guidance on how to search for TRI facilities [EXIT](#).

**ⓘ** Data sources: 2020 Updated Dataset, released May 2022. Risk-Screening Environmental Indicators (RSEI) model results based on 2020 National Analysis dataset, released October 2021.

*NOTE: the TRI Program covers many—but not all—industry sectors and chemicals. Additionally, some facilities within a covered sector may not meet TRI reporting criteria.*





# Enforcement and Compliance History Online



Enforcement and Compliance History Online

[Login](#) [Contact Us](#)

echo.epa.gov

**Webinars  
Every Other  
Month!**

- Quick Search
- Search Options
- Analyze Trends
- Find EPA Cases
- Data Services
- Help
- News

## Quick Search

**Search By**

Location
  Facility Name/ID

[More Search Options](#)

Use EPA's Enforcement and Compliance History Online website to search for facilities in your community to assess their compliance with environmental regulations. You can use ECHO to:

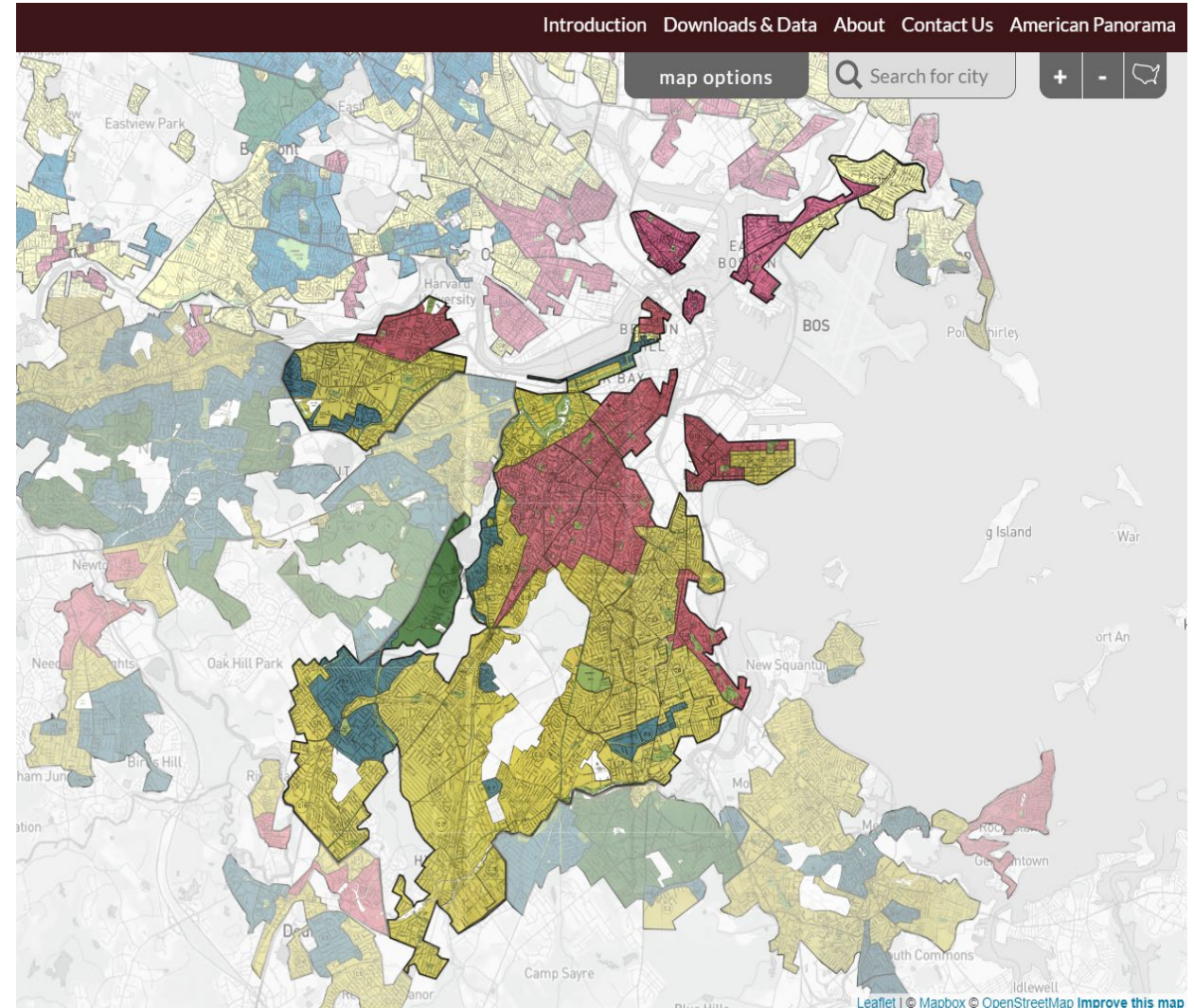
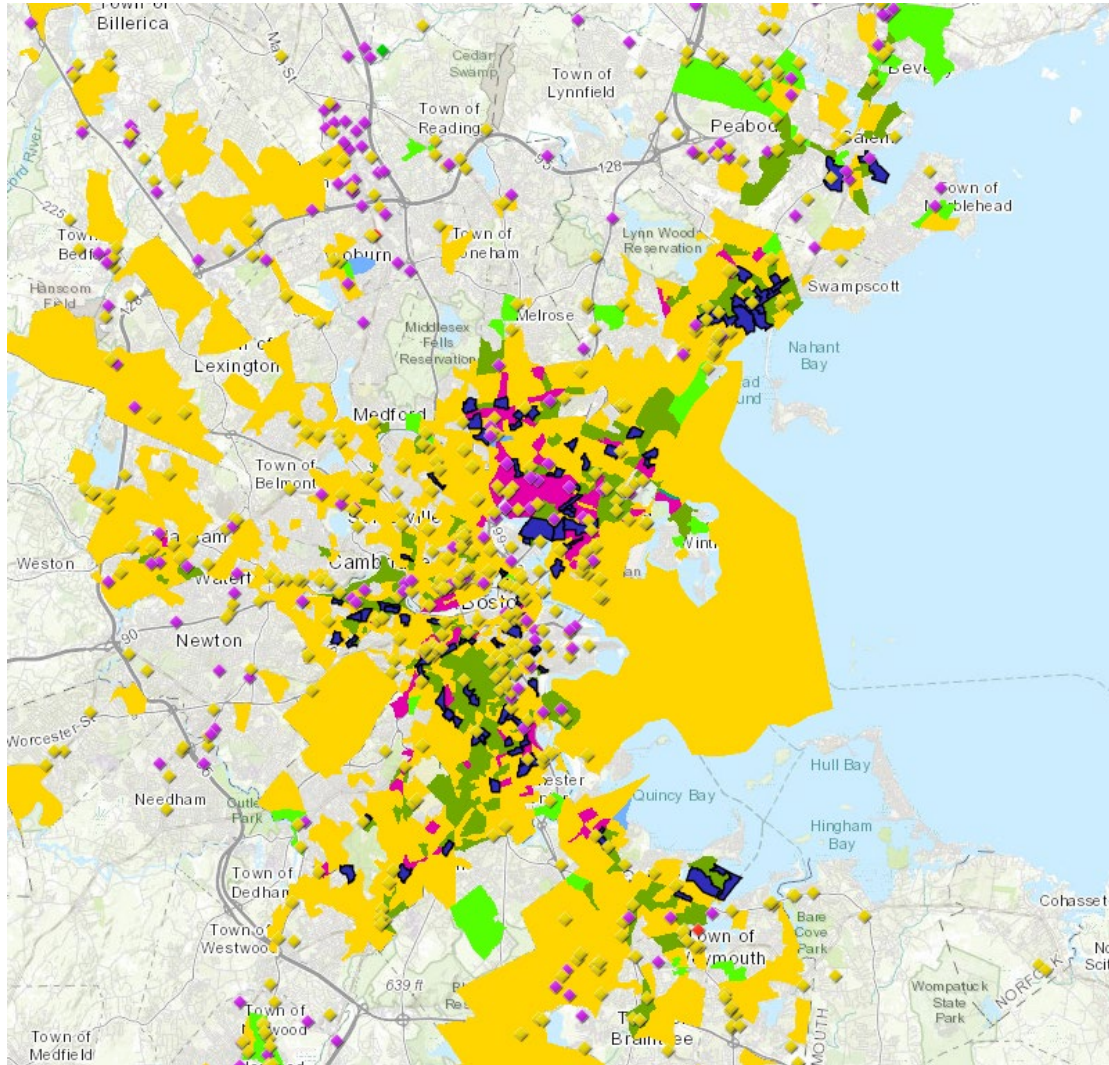
- Search for Facilities
- Investigate Pollution Sources
- Search for EPA Enforcement Cases
- Examine and Create Enforcement-Related Maps
- Analyze Trends in Compliance & Enforcement Data

[Read the Quick Start Guide](#)
[Watch a Video Tutorial](#)
[Explore the Tool Guide](#)

# Environmental Justice

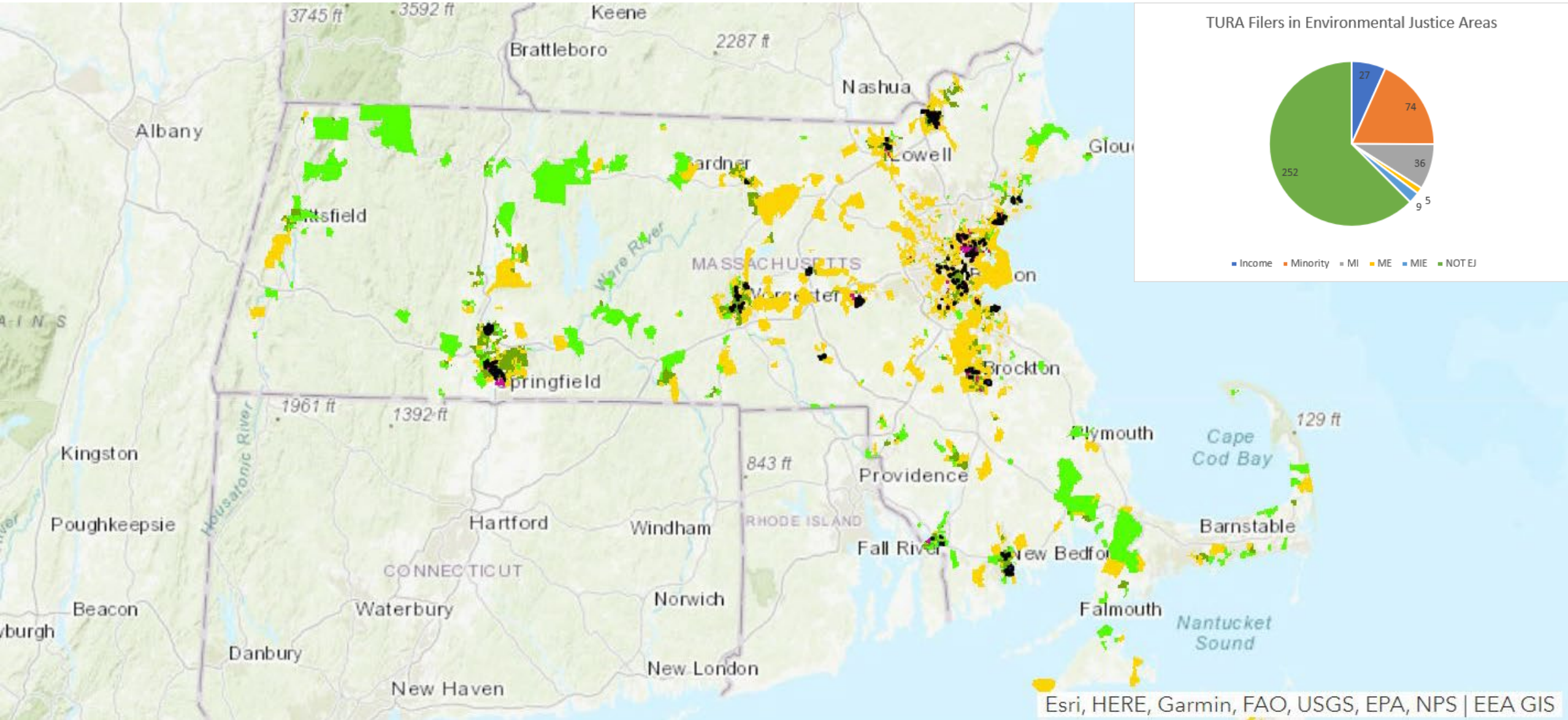
---

# OTA Climate Map vs. Old Redlining Maps





# Exposure Inequalities



# Toxics Policy & Outreach

---



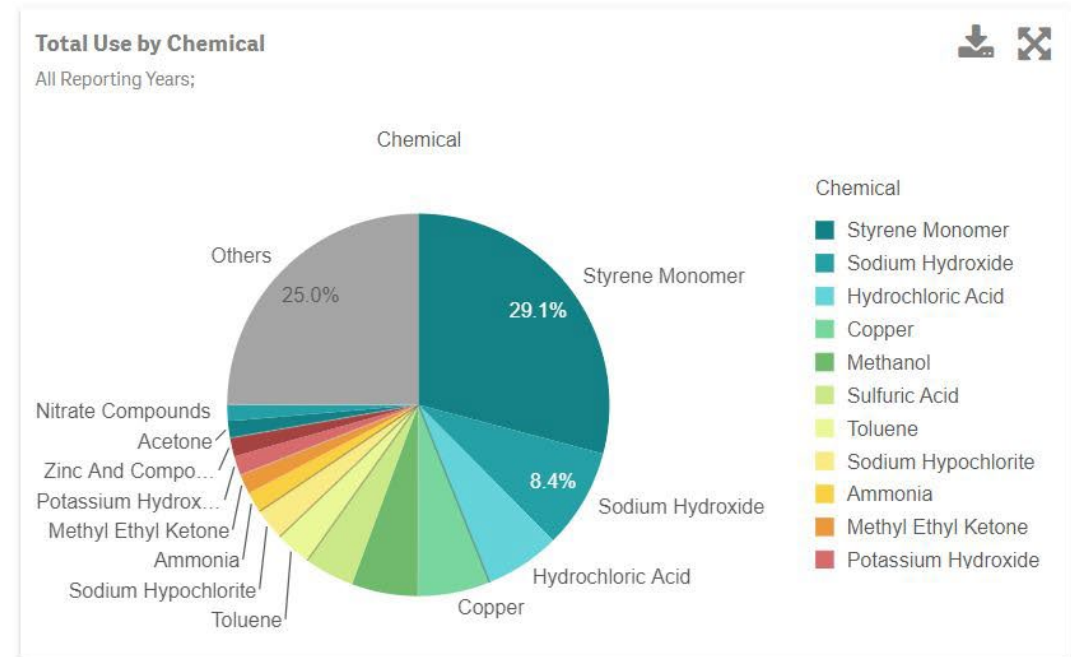
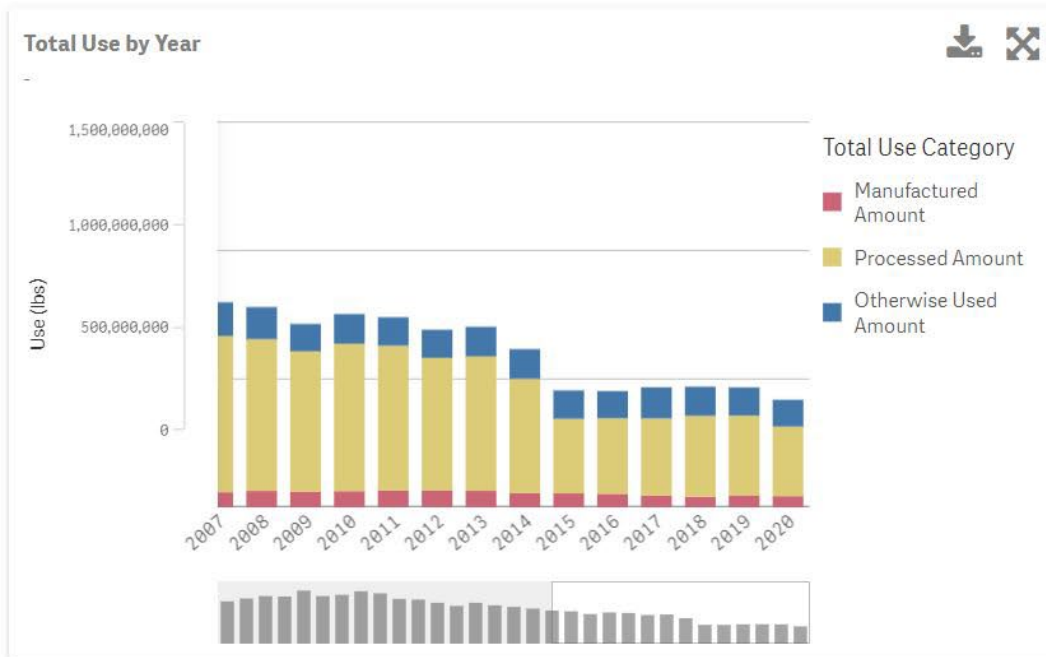
# TURA Data (Formatted Like TRI website)

Massachusetts  
Toxics Use Reduction



- Home
- Community Search
- Facility Search
- Chemical Search
- Facilities Map
- Data Detail

Reporting Year



# TRI Explorer - Facility

enviro.epa.gov/  
 triexplorer/  
 tri\_release.facility

## TRI Explorer

You are here: [EPA Home](#) » [TRI](#) » [TRI Explorer](#) » [Release Reports - Release Facility Report](#)

## Release Reports

[Fact Sheets](#) | [Release Reports](#) | [Waste Transfer Reports](#) | [Waste Quantity Reports](#)

---

[Chemical](#) | [Facility](#) | [Federal Facility](#) | [Geography](#) | [Industry](#) | [Trends](#)

### Release Facility Report [i](#)

This site uses pop-up windows, click here for help on allowing pop-ups from this site

[Go To New Report](#)

#### Year of Data [i](#)

2020 ▾

#### Geographic Location [i](#)

Massachusetts ▾

Select from List of Counties

#### Chemical [i](#)

All chemicals ▾

#### Industry [i](#)

All Industries ▾

#### Data Set [i](#)

The default is Data Source: 2020 Updated Dataset (released May 2022)

Select 2020 National Analysis Dataset (October 2021, released October 2021)

Select 2019 National Analysis Dataset (released October 2020)

#### Report columns to include [i](#)

- TRIF ID
- Number of Form Rs
- Number of Form As (starting 1995)
- Longitude/Latitude

#### Total On-site Disposal or Other Releases

*Details*

- On-Site Disposal to Class I Wells, RCRA Subtitle C Landfills, and Other On-Site Landfills
- Other On-Site Disposal or Other Releases

#### Total Off-site Disposal or Other Releases

*Details*

- Off-Site Disposal to Underground Injection Wells, RCRA Subtitle C Landfills, and Other Landfills
- Other Off-Site Disposal or Other Releases

#### Total On-and Off-site Disposal or Other Releases

[Generate Report](#)

# TRI Factsheets

## TRI Explorer

You are here: [EPA Home](#) » [TRI](#) » [TRI Explorer](#) » [Fact Sheets](#)

- [Fact Sheets](#)
- [Release Reports](#)
- [Waste Transfer Reports](#)
- [Waste Quantity Reports](#)

## Fact Sheets

Year of Data [i](#)

2020 ▾

Topic of Interest: [i](#)

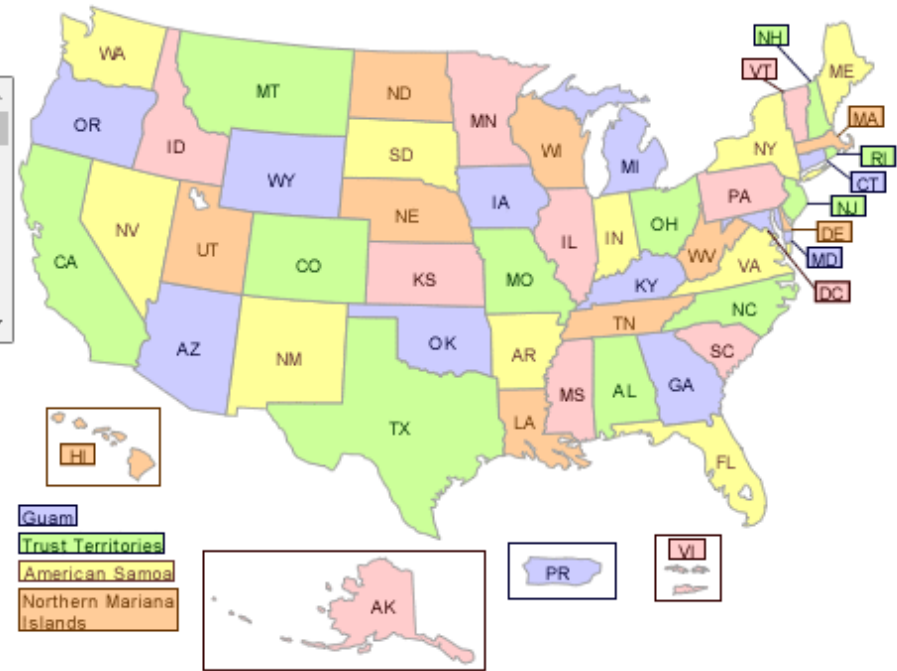
- Chemical-Individual/Category
- Chemical Group
- Industry
- Region
- MSA
- LAE
- ZIP Code

ZIP Code: [i](#)

Submit

Data Set [i](#)

- The default is Data Source: 2020 Updated Dataset (released May 2022)
- Select 2020 National Analysis Dataset (October 2021, released October 2021)
  - Select 2019 National Analysis Dataset (released October 2020)



enviro.epa.gov/  
triexplorer/  
tri\_factsheet\_search.  
searchfactsheet

# Identifying Potential Per-and Polyfluoroalkyl Substances (PFAS) Using Industries

Standard Industrial Classification (SIC) Code	Industry	North American Industry Classification System (NAICS) Code	Industry
2821	Plastics Materials & Synthetic Resins	322220	Paper Bag & Coated & Treated Paper Manufacturing
3479	Metal Coating & Allied Services	334419	Other Electronic Component Manufacturing
3999	Manufacturing Industries	33599	All Other Miscellaneous Electrical Equipment & Component Manufacturing
2295	Coated Fabrics, Not Rubberized	335929	Other Communication & Energy Wire Manufacturing
5172	Petroleum Products		

# Process for Identifying Companies



Search online libraries & resources for SICs / NAICS



Compare TRI information with TURA



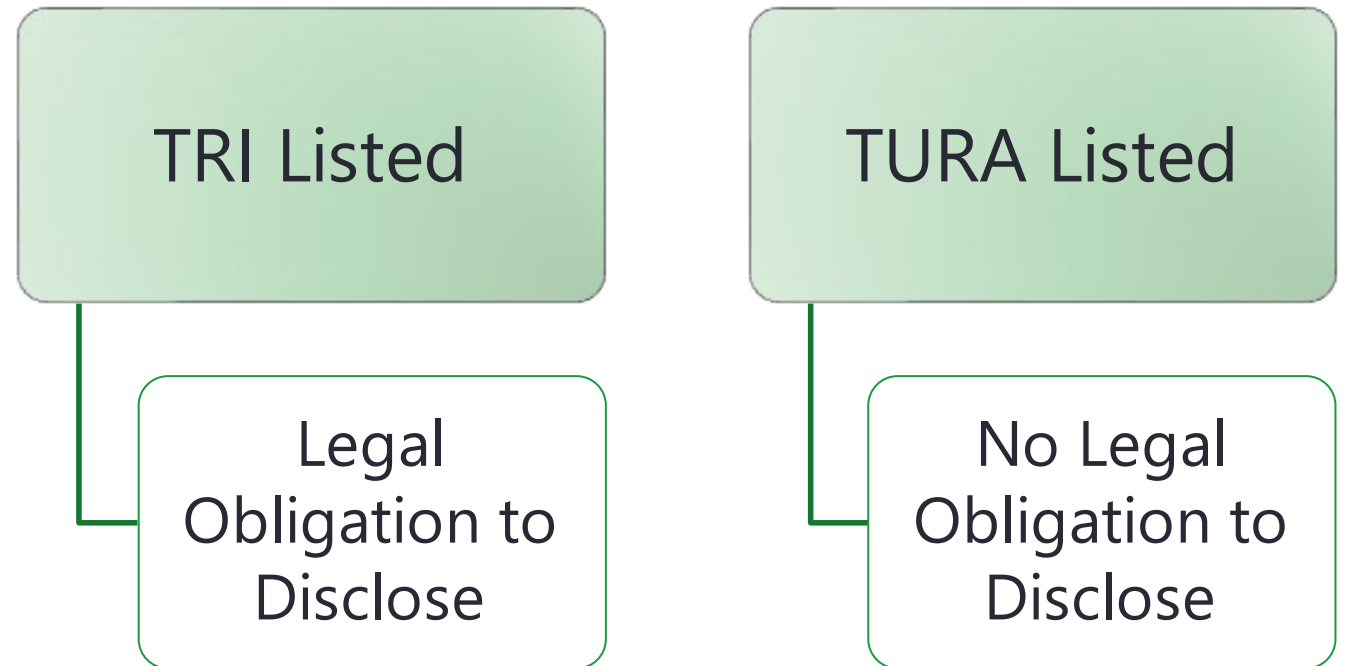
Visit company websites



Process qualifies as non-stick coating, waterproofing, etc.

# Supplier Notification Letter

OTA has developed a **supplier notification letter** that companies can use to request information from their suppliers about PFAS reportable under TRI and TURA.



# US EPA July TRI Bulletin - PFAS

EPA has proposed a rule to eliminate *de minimis* exemption for PFAS reporting and supplier notification requirements under TRI



## Toxics Release Inventory (TRI) Program

Providing Pollution Prevention and Toxic Chemical Release Information

### How this will impact TURA:

Eliminating de minimis exemption would likely result in increased PFAS reporting under TURA

- TRI chemicals are adopted into TURA
  - For TRI-listed PFAS on the TURA list, the 100 lb. TRI threshold is used
  - For other PFAS on the TURA list, the thresholds are 25,000 lbs manufactured/processed, 10,000 lbs otherwise used
- More PFAS source information will be captured through supplier notification requirements

# Contact Us

Tiffany Skogstrom, MPH

*Director, Office of Technical Assistance*

[tiffany.skogstrom@mass.gov](mailto:tiffany.skogstrom@mass.gov)

Website: [mass.gov/ota](https://mass.gov/ota)



: @Mass\_OTA

