



Bulletins Live!

Two

A summary of what has changed
in the modernized BLT

Basics of Bulletins

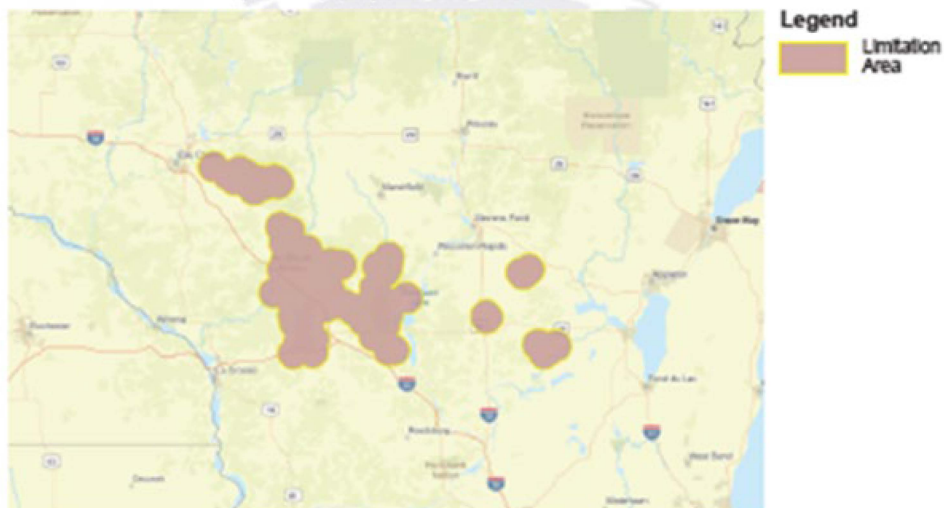
- If limitations on pesticide use are necessary to protect listed species in an area, that information is relayed through a Pesticide Use Limitation Area (PULA)
- A PULA consists of:
 - Spatial data
 - Product/application/formulation information
 - Limitation/mitigation language
- This information is converted into a 'printable' pdf called a **Bulletin**

Endangered Species Protection Bulletin



Application Month: February 2022
Product: INTREPID 80WSP AGRICULTURAL INSECTICIDE (62719-438)

1 Areas where pesticide use must be limited are identified on the map. A legend is located beside the map to help pinpoint these locations.



2 Look below at the Pesticide Use Limitation Summary Table. This table lists the user selected Active Ingredient(s) (AIs) or Product(s) with pesticide use limitations on the printed map. Locate the Active Ingredient (AI) or Product you intend to apply in this table and identify the code in the last column. This code indicates the specific limitation associated with that AI or Product. A limitation description for each code can be found below in the Codes and Limitations Table. If multiple Pesticide Use Limitation Areas (PULAs) are visible on the map, these tables provide information for the highlighted PULA.

If you are applying a pesticide that contains more than one Active Ingredient, or multiple Products, then multiple codes may apply. Follow the limitations for all codes when using this pesticide.

Endangered Species Protection Bulletin

Pesticide Use Limitation Summary Table

Product	AI	Use	Method	Form	Code
INTREPID 80WSP AGRICULTURAL INSECTICIDE (62719-438)	Methoxyfenozide	Cranberries	Aerial spray	Any form	1a
INTREPID 80WSP AGRICULTURAL INSECTICIDE (62719-438)	Methoxyfenozide	Cranberries	Ground spray	Any form	1a
INTREPID 80WSP AGRICULTURAL INSECTICIDE (62719-438)	Methoxyfenozide	All Other Uses	Ground spray	Any form	1
INTREPID 80WSP AGRICULTURAL INSECTICIDE (62719-438)	Methoxyfenozide	All Other Uses	Aerial spray	Any form	1

Codes and Limitations Table

Code	Limitation
1	Do not apply this product in the specified areas.

Not all chemicals that list BLT on the label will have PULAs

- The pdf will show a blank map
- The text will read, “Currently, no pesticide use limitations exist within the printed map view for the month/year and product you selected, beyond the instructions specified on the pesticide label.”



Application Month: February 2022
Product: INTREPID 80WSP AGRICULTURAL INSECTICIDE (62719-438)

- 1 Areas where pesticide use must be limited are identified on the map. A legend is located beside the map to help pinpoint these locations.



Currently, no pesticide use limitations exist within the printed map view for the month/year and product you selected, beyond the instructions specified on the pesticide label.

Follow the use instructions on your label.

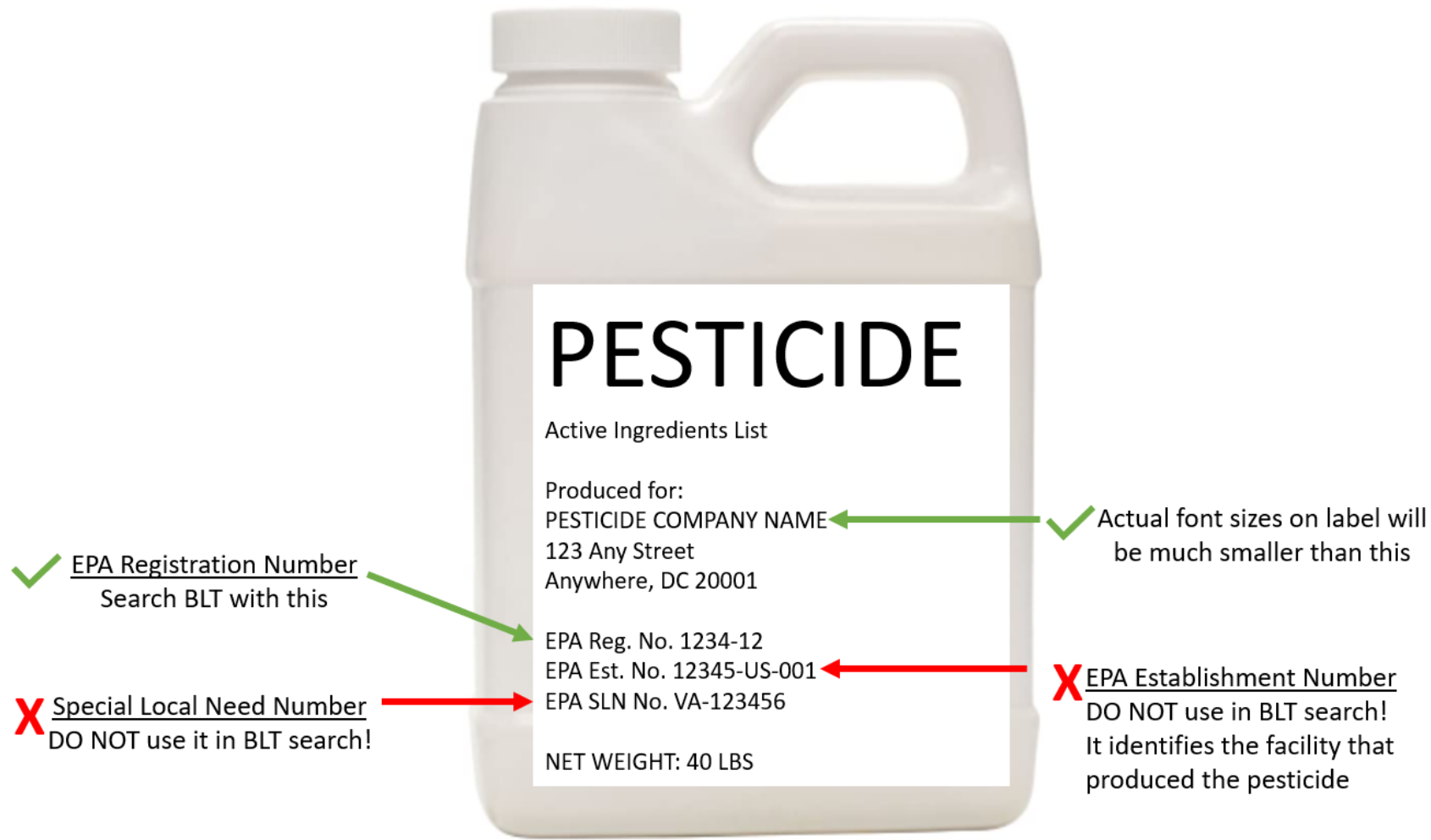
Ensure that your pesticide application area is within the printed map view. If it is not, follow the directions on the Instructions Tab to ensure that your pesticide application area is captured within the printed map view.

Please check back if you plan to apply your pesticide in an area outside the map view or in a month and year other than the one for which this Bulletin is valid.

Overview of improvements

1. Updated web framework
2. Increased system capacity
3. Added Dynamic Searches for Product Information by using EPA's Pesticide Product Label System (PPLS)
 - BLT now has faster search times
 - Also, removed Product Search, which was confusing and could lead to errors

- Product Name Search was confusing and could result in errors:
 - Too many similar sounding product names
 - Users were inputting incorrect active ingredient
- **Users in BLT will now only be able to search by EPA registration number**
- **New web language has been developed to help users find EPA registration Numbers.**



Instructions for using BLT

We plan to update the “Understand Bulletins Live! Two” Webinar soon.

We have already updated the following resources:

- Written Tutorial
 - [Read the tutorial Bulletins Live! Two](#)
- Quick Start Guide
 - <https://www.epa.gov/endangered-species/endangered-species-protection-bulletins#quick>
- Learn how to locate the EPA registration number to search for a product in Bulletins Live! Two
 - <https://www.epa.gov/endangered-species/endangered-species-protection-bulletins#how-to>

Current View: **January 2022**

Basemaps

Find address or place

0% Opacity 100%

Map Layers

- Pesticide Use Limitation Area (PULA)

Explanation

- Effective

Map Scale: 1:36978595 Lat: 28.9288, Lng: -59.7210

Esri, HERE, Garmin, FAO, NOAA, USGS, EPA

INSTRUCTIONS

RESULTS

- and using the + and - buttons to zoom in and out, or
- b. Enter your intended pesticide application area into the Location Search Tool to automatically zoom to that location.
 2. Select your Application Month.
 3. Optional: Refine your search by entering a specific active ingredient or product and click the "Search" button. (Default is all active ingredients and products).
 4. Click on the PULA within your intended pesticide application area to activate the Results Tab with the associated limitations and print your Bulletin. If no PULA is present, click the "Search" button to activate the "No Limitations" dialog box and print your Bulletin.
 5. To complete an additional search, use the "Clear All" button to clear your current results.

Application Month:

January 2022

Active Ingredient:

All

Product Name:

Start typing Product name

-- OR --

Product Registration Number:

Type Product Registration #

SEARCH

CLEAR ALL

Former interface

Directions

This tool displays Pesticide Use Limitation Areas (PULAs) for products with active Endangered Species Protection Bulletins. To generate a printable bulletin, please follow these steps:

1. Navigate the map to your intended pesticide application area by using the "Location Search" tool or panning and zooming on the map itself.
2. Select your Application Month from the Application Date dropdown.
3. Search for a specific pesticide

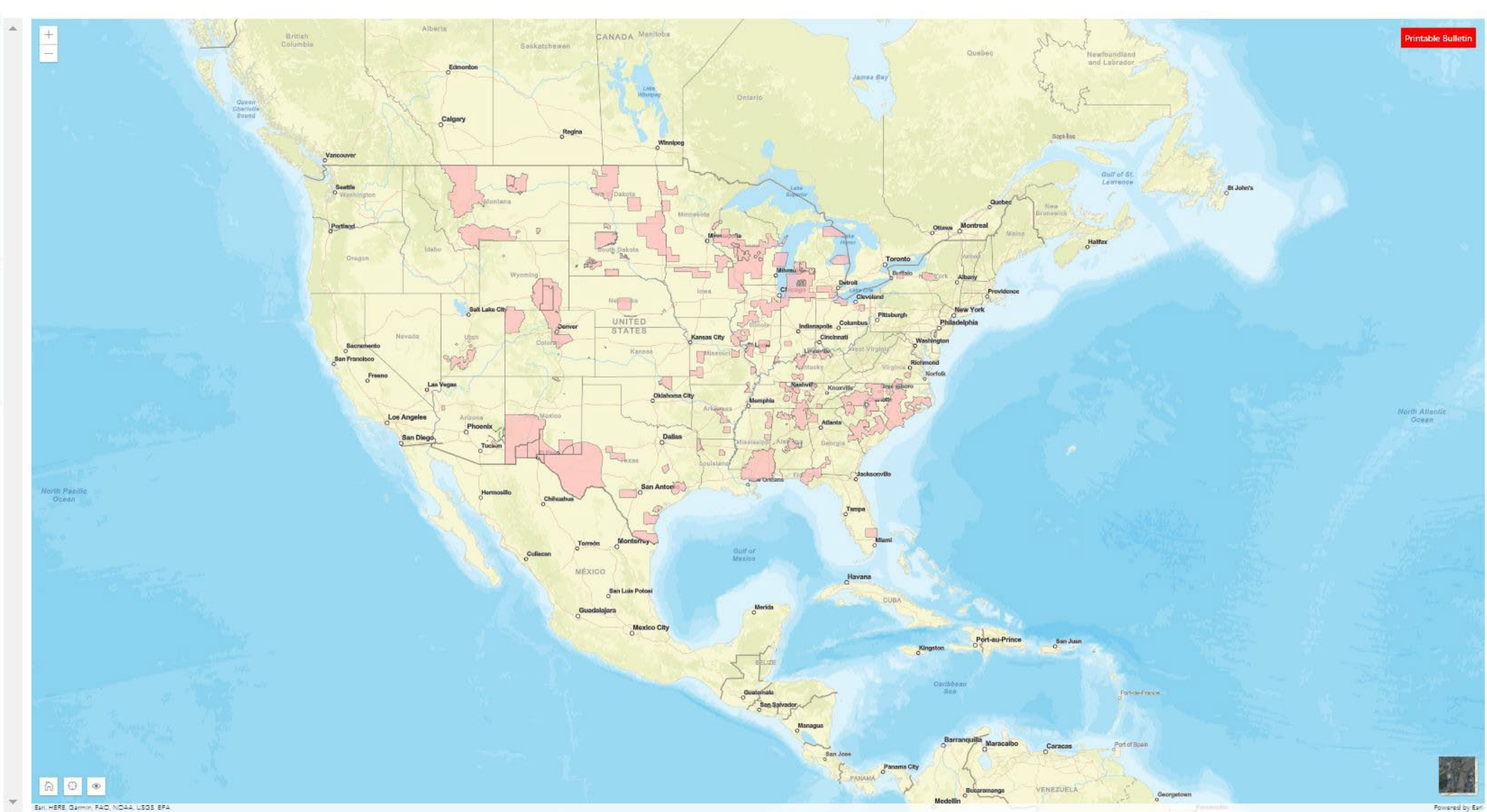
[Unpin](#)

Location Search:

Application Month:

February 2022

EPA Registration Number:



Updated, current interface



Bulletins Live!

Two

Thank you! Questions?
Email espp@epa.gov

Presenters:
Stephen Muela
muela.stephen@epa.gov

Amy Adams adams.amy@epa.gov