

P2 Environmental Justice Facility Mapping Tool Guide

Users' guide for map-driven tool that identifies facilities in or adjacent to underserved communities



Purpose

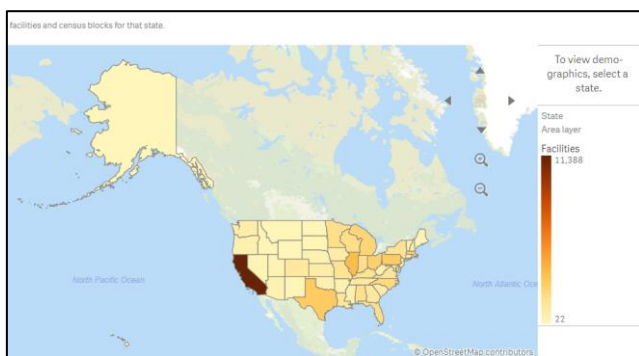
The [Pollution Prevention \(P2\) Environmental Justice \(EJ\) Facility Mapping Tool](#) allows P2 grantees to identify facilities in areas in or adjacent to communities with EJ concerns. Once users identify an area of interest and apply filters, the Tool provides a downloadable table with contact information for the facilities' P2 contacts, if available. This guide walks through the key components of the tool.

Click the [Tour This Tool](#) button to take a self-guided virtual tour. The [User Guide](#) button brings you to this Guide.



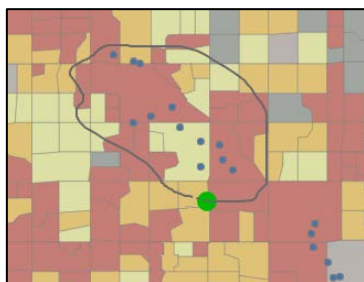
Step 1: Focus Map

The map initially displays each state shaded by the number of facilities in that state.



Selecting (clicking) a state will show details for that state, including the location of facilities as well as shading of Census block groups in the state by the chosen [EJ metric](#).

After zooming in to an area of interest on the map, click anywhere on the map to display two selection tools – a **lasso** and a **circle** – above the map. Click on either of these tools to draw a boundary around a specific area of interest on the map. Once you select an area, you can apply filters, as described in Step 2.



Circle an area
Lasso an area

P2 EJ Facility Mapping Tool Guide

Step 2: Apply Filters

After selecting an area, you can apply filters to focus on a subset of the data displayed. Doing so will automatically refresh the entire page with the filtered data.

NEA Sector

Filter for facilities that are in one of the five industrial sector [National Emphasis Areas \(NEAs\)](#) as defined by EPA's P2 Grants program.

NAICS Drilldown

Filter based on a sector defined by North American Industry Classification System (NAICS) codes. After selecting a sector, click the filter again to further refine the sector selection.

The screenshot displays the filter interface of the P2 EJ Facility Mapping Tool. It is organized into several sections:

- Filters:** Includes dropdown menus for 'State', 'NEA Sector', and 'NAICS Drilldown'.
- Map Legend:** A 'Percentile Colors' legend with a search bar and a list of percentile ranges: 95-100 percentile (red), 90-95 percentile (orange), 80-90 percentile (yellow), 70-80 percentile (light green), 60-70 percentile (medium green), 50-60 percentile (dark green), Less than 50 percentile (light blue), and Data Not Available (dark blue).
- EJSCREEN Data (Percentile):** A section with two buttons: 'Demographic Index' (highlighted) and 'Supplemental Demographic Index'.
- Individual Metrics:** A list of buttons for 'People of Color', 'Low Income', 'Less Than HS Education', 'Linguistically Isolated', 'Unemployment Rate', and 'Low Life Expectancy'.
- Scope:** Two buttons: 'Use US Percentiles' (highlighted) and 'Use State Percentiles'.
- Summary:** On the right, it shows 'Census Block Groups: 4,178' and 'Facilities: 382'.
- Systems:** A list of checkboxes for 'TRI', 'RCRA', 'GHG', 'NEI', and 'Water'.
- Show ≥ 80th Percentile?:** A checkbox currently set to 'Yes'.

EJScreen Data Selector

Choose a demographic index to use in shading the Census block groups* on the map. The indices available in this Tool are based on EPA's [EJScreen](#) tool and each includes a combination of individual metrics:

- **Demographic Index:** Percentile of the Census block group based on the average of Percent People of Color and Percent Low Income.
- **Supplemental Demographic Index:** Percentile of the Census block group based on five demographic metrics: Low Income, Less Than HS Education, Linguistically Isolated, Unemployment Rate, and Low Life Expectancy.

Individual Metric Selector for Demographics

As an alternative to shading the map based on an EJScreen index, users can choose to shade the map based on one of the individual demographic metrics that make up the indices. Those are:

- **People of Color:** Individuals who list their racial status as a race other than white alone and/or list their ethnicity as Hispanic or Latino.
- **Low Income:** Individuals in households where the household income is less than or equal to twice the federal poverty level.
- **Less Than HS Education:** Individuals aged 25 and over with less than a high school (HS) degree.
- **Linguistically Isolated:** Households in which no one age 14 and over speaks English "very well" or speaks English only (as a fraction of households).
- **Unemployment Rate:** Number of unemployed people as a percentage of the labor force.
- **Low Life Expectancy:** Life expectancy represents the average number of years that a group of infants would live if the group was to experience, throughout life, the age-specific death rates present in the year of birth.

Scope Selector

Select whether the map's shading is based on U.S. or state percentiles.

80th Percentile Selector

This button automatically filters the results to include only those facilities at or above the 80th percentile of the chosen EJ metric.

*A block group is an area defined by the U.S. Census Bureau that usually encompasses a range of 600-3,000 people living in it. The U.S. is divided into more than 200,000 block groups.

P2 EJ Facility Mapping Tool Guide

Data System Filters

This Tool includes facilities in manufacturing and NEA sectors that are in one or more of five EPA data systems. Select one or multiple systems to limit results to only facilities in the selected system(s):

- **TRI:** Facilities that reported to EPA's Toxics Release Inventory (TRI) for 2020.
- **RCRA:** Facilities with hazardous waste shipments per EPA's Resource Conservation and Recovery Act (RCRA) e-manifest data for July 2020 - July 2021.
- **GHG:** Facilities that reported to EPA's Greenhouse Gas Reporting Program for 2020.
- **NEI:** Facilities included as point sources in EPA's 2017 National Emissions Inventory.
- **Water:** Facilities that submitted Discharge Monitoring Reports (DMRs) for direct discharges to water during 2020 under an EPA National Pollutant Discharge Elimination System (NPDES) permit.

Filter Features

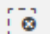
Current Selections

The selected filters will be listed in the green bar along the top of the page.

Clicking the **x** icon next to the individual filter will remove the filter from the data presented in the map and table.



Clear All Filters

Clicking this icon  will remove ALL the selected filters from the data presented in the graphics.

Census Block Groups and Facility Counts

Census Blocks
4,178
Facilities
382

This dynamic count reflects the number of Census block groups based on all currently selected filters. Similarly, the count below it shows the currently selected facilities.

Step 3: Generate and Download Table

Detail Table & Magnifying Glass Icon

The table under the map shows the data for the selected facilities based on the chosen state and any other filters that have been applied.

NOTE: Use the magnifying glass icons in each column header to search and filter on selected values.

State	US	State	Facility Name	Facility Street Address	Facility City	Facility ZIP Code
-------	----	-------	---------------	-------------------------	---------------	-------------------

Download Data

Use this button [Download Details](#) to download an Excel file with the data in the table.