

EVERGLADES REMAP PROGRAM REPORTS AND PUBLICATIONS

September 2021

USEPA Everglades REMAP: <https://www.epa.gov/everglades/environmental-monitoring-everglades>

Abbey-Lee, Robin N., Evelyn N. Gaiser and J. C. Trexler. 2013. Relative roles of dispersal dynamics and competition in determining the isotopic niche breadth of a wetland fish. *Freshwater Biology* 58:780-792. doi:10.1111/fwb.12084.

Axelrad, Donald M., Thomas D. Atkeson, Ted Lange, Curtis D. Pollman, Cynthia C. Gilmour, William H. Orem, Irving A. Mendelssohn, Peter C. Frederick, David P. Krabbenhoft, George R. Aiken, Darren G. Rumbold, Daniel J. Scheidt, and Peter I. Kalla. 2007. Chapter 3B: Mercury Monitoring, Research and Environmental Assessment in South Florida. In 2007 South Florida Environmental Report. SFWMD and FDEP. 57 pages.

Axelrad, Donald M., Ted Lange, Mark Gabriel, Thomas D. Atkeson, Curtis D. Pollman, William H. Orem, Daniel J. Scheidt, P. I. Kalla, P. C. Frederick and C. C. Gilmour. 2008. Chapter 3B: Mercury and Sulfur Monitoring, Research and Environmental Assessment in South Florida. In 2008 South Florida Environmental Report. SFWMD and FDEP. 55 pages.

Cai, Yong, Rudolf Jaffé, and Ronald Jones. 1997. Ethylmercury in the Soils and Sediments of the Florida Everglades. *Environmental Science and Technology* 31(1):302–305.

Doren, Robert, John C. Volin and Jennifer H. Richards. 2009. Invasive exotic plant indicators for ecosystem restoration: An example from the Everglades restoration program. *Ecological Indicators* 9S:S29–S36.

Gaiser, Evelyn E. Paul V. McCormick, Scot E. Hagerthey and Andrew D. Gottlieb. 2011. Landscape Patterns of Periphyton in the Florida Everglades. *Critical Reviews in Environmental Science and Technology* 41(S1:92-120).

Ivey, C. and J.H. Richards. 2001. Genotypic diversity and clonal structure of Everglades sawgrass, *Cladium jamaicense* (Cyperaceae). *International Journal of Plant Science* 162:1327-1335.

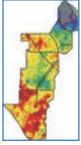
Ivey, C. and J.H. Richards. 2001. Genetic diversity of Everglades sawgrass *Cladium jamaicense*, (Cyperaceae). *International Journal of Plant Science* 162: 817-825.

Jiang, P., G. Liu, W. Cui and Y. Cai. 2018. Geochemical modeling of mercury speciation in surface water and implications on mercury cycling in the Everglades wetland. *Science of the Total Environment* 640-641:454-465.

John, A., H. R. Fuentes and F. George. 2021. Characterization of the water retention curves of Everglades wetland soils. *Geoderma* 381:114724. <https://www.sciencedirect.com/science/journal/00167061/381/supp/C>

Kalla, P. I. and D. J. Scheidt. 2017. Everglades ecosystem assessment – Phase IV, 2014: Data reduction and initial synthesis. USEPA Science and Ecosystem Support Division. SESD Project 14-0380. Athens, Georgia. 58 pages.

Kalla, P., M. Cyterski, J. Minucci and D. Scheidt. 2019. Modelling of mercury bioaccumulation in mosquitofish (*Gambusia sp.*) for the Everglades Regional Monitoring and Assessment Program. USEPA Laboratory Services and Applied Science Division, Athens, GA. LSASD 20-0085. 35 pages.



Kalla, P., M. Cyterski, D. Scheidt and J. Minucci. 2021. Spatiotemporal Effects of Interacting Water Quality Constituents on Mercury in a Common Prey Fish in a Large, Perturbed, Subtropical Wetland. *Science of the Total Environment* 792 (2021) 148321. <https://doi.org/10.1016/j.scitotenv.2021.148321>

Li, Yanbin, Yuxiang Mao, Guangliang Liu, Georgio Tachiev, David Roelant, Xinbin Feng and Yong Cai. 2011. Degradation of Methylmercury and Its Effects on Mercury Distribution and Cycling in the Florida Everglades. *Environmental Science and Technology* 44:6661–6666.

Li, Yanbin, Zhiwei Duan, Guangliang Liu, Peter Kalla, Daniel Scheidt and Yong Cai. 2015. Evaluation of the possible sources and controlling factors of toxic metals/metalloids in the Florida Everglades and their potential risk of exposure. *Environmental Science & Technology*. DOI:10.1021/acs.est.5b01638.

Liu, G., Y. Cai, P. Kalla, D. Scheidt, J. Richards, L. Scinto, E. Gaiser and C. Appleby. 2008a. Mercury mass budget estimates and cycling seasonality in the Florida Everglades. *Environmental Science and Technology* 42:1954-1960.

Liu, G., Y. Cai, T. Philippi, P. Kalla, D. Scheidt, L. Scinto, J. Richards and J. Trexler. 2008b. Distribution of total and methylmercury in different ecosystem compartments in the Everglades: Implications for mercury accumulation. *Environmental Pollution* 153:257-265.

Liu, G., Yong Cai, Yuxiang Mao, Daniel Scheidt, Peter Kalla, Jennifer Richards, Leonard Scinto, Georgio Tachiev, David Roelant and Charlie Appleby. 2009. Spatial Variability in Mercury Cycling and Relevant Biogeochemical Controls in the Florida Everglades. *Environmental Science and Technology* 43(12):4361-4366. DOI: 10.1021/es803665c

Liu, G., G. M. Naja, P. Kalla, D. Scheidt, E. Gaiser, and Y. Cai. 2011. Legacy and fate of mercury and methylmercury in the Florida Everglades. *Environmental Science and Technology*, 45(2):496-501. Supporting information S1-S41.

Liu, Guangliang, Yong Cai, Georgio Tachiev and Leone Lagos. 2015. Mercury Mass Budget Estimates and Cycling in the Florida Everglades. Chapter 4 in *Microbiology of the Everglades Ecosystem*. James A. Entry, Andrew D. Gottlieb, Krish Jayachandran, Andrew Ogram (editors). CRC Press.

Orem, William, Cynthia Gilmour, Donald Axelrad, David Krabbenhoft, Daniel Scheidt, Peter Kalla, P. McCormick, Mark Gabriel and George Aiken. 2011. Sulfur in the South Florida Ecosystem: Distribution, Sources, Biogeochemistry, Impacts, and Management for Restoration. *Critical Reviews in Environmental Science and Technology* 41(S1):249-288.

Osborne, T. Z., S. Newman; D. J. Scheidt, P. I. Kalla, G. L. Bruland, M. J. Cohen, L. J. Scinto and L. R. Ellis. 2011. Landscape Patterns of Significant Soil Nutrients and Contaminants in the Greater Everglades Ecosystem: Past, Present, and Future. *Critical Reviews in Environmental Science and Technology* 41(S1):121-148.

Richards, J.H. and C.T. Ivey. 2004. Morphological plasticity of *Sagittaria lancifolia* L. in response to phosphorus. *Aquatic Botany* 80:53-67.

Richards, Jennifer and Tom Philippi. 2005. Macrophyte sampling, South Florida R-EMAP project. 2005 dry season. Final Report. Florida International University Department of Biological Sciences. 54 pages.



Richards, J. H., T. Philippi, P. Kalla and D. Scheidt. 2008. Everglades marsh vegetation: species associations and spatial distributions from R-EMAP Phase III. Florida International University Department of Biological Sciences. 38 pages.

Richards, Jennifer, Leonard J. Scinto, Yong Cai, Daniel Gann and Guangliang Liu. 2017. Regional Environmental Monitoring and Assessment Program (REMAP) IV: Greater Everglades Whole-Ecosystem Monitoring and Assessment. September 28, 2017. Florida International University. Miami, Florida. 208 pages.

Sargeant, B., J.C. Trexler, E.E. Gaiser. 2010. Biotic and Abiotic Determinants of Intermediate-Consumer Trophic Diversity in the Florida Everglades. *Marine & Freshwater Research* 61:11-22.

Sargeant, Brooke L., Evelyn E. Gaiser, and Joel C. Trexler. 2011. Indirect and direct controls of macroinvertebrates and small fish by abiotic factors and trophic interactions in the Florida Everglades. *Journal of Freshwater Biology* DOI: [10.1111/j.1365-2427.2011.02663.x](https://doi.org/10.1111/j.1365-2427.2011.02663.x)

Scheidt, Daniel, J. Stober, R. Jones and K. Thornton. 2000. South Florida ecosystem assessment: water management, soil loss, eutrophication and habitat. EPA 904-R-00-003. USEPA Region 4. Atlanta, Georgia. 38 pages.

Scheidt, D. J. and P. I. Kalla. 2007. Everglades ecosystem assessment: water management, water quality, eutrophication, mercury contamination, soils and habitat. Monitoring for adaptive management: A REMAP status report. EPA 904-R-07-001. USEPA Region 4. Athens, Georgia. 104 pages.

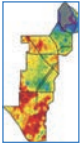
Scheidt, D. J., P. I. Kalla and D. D. Surratt. 2021. Everglades Regional Environmental Monitoring and Assessment Program - REMAP. Water quality and management, nutrients, mercury, soils and habitat. Monitoring for adaptive management: a phase IV update. EPA 904-R21-002. USEPA Region 4, Atlanta, Georgia. 130 pages.

Stober, Q. J., R. D. Jones and D. J. Scheidt. 1995. Ultra-trace level mercury in the Everglades Ecosystem: A Multi-media Pilot Study. *Water, Air and Soil Pollution* 80:991-1001.

Stober, Jerry, Daniel Scheidt, Ron Jones, Kent Thornton, Robert Ambrose, and Danny France. 1996. South Florida Ecosystem Assessment. Monitoring for Adaptive Management: Implications for Ecosystem Restoration. Interim Report. EPA-904-R-96-008. USEPA Region 4 SESD and ORD. Athens, Georgia. 26 pages.

Stober, Jerry, Daniel Scheidt, Ron Jones, Kent Thornton, Robert Ambrose, and Danny France. 1998. South Florida Ecosystem Assessment. Monitoring for Adaptive Management: Implications for Ecosystem Restoration. Final Technical Report - Phase I. EPA-904-R-98-002. USEPA Region 4 Science and Ecosystem Support Division. Athens, Georgia. 478 pages.

Stober, Q. J., K. Thornton, R. Jones, J. Richards, C. Ivey, R. Welch, M. Madden, J. Trexler, E. Gaiser, D. Scheidt and S. Rathbun. 2001. South Florida Ecosystem Assessment: Phase I/II- Everglades Stressor Interactions: Hydropatterns, Eutrophication, Habitat Alteration, and Mercury Contamination (Summary). EPA 904-R-01-002. September 2001. USEPA Region 4 Science and Ecosystem Support Division. Athens, Georgia. 63 pages.



Stober, Q. J., K. Thornton, R. Jones, J. Richards, C. Ivey, R. Welch, M. Madden, J. Trexler, E. Gaiser, D. Scheidt and S. Rathbun. 2001. South Florida Ecosystem Assessment: Phase I/II (Technical Report- Everglades Stressor Interactions: Hydropatterns, Eutrophication, Habitat Alteration, and Mercury Contamination. EPA 904-R-01-003. September 2001. USEPA Region 4 Science and Ecosystem Support Division. Athens, Georgia. 1625 pages.

Tarpey, Thaddeus and Christopher T. Ivey. 2006. Allometric Extension for Multivariate Regression. *Journal of Data Science* 4:479-495.

Trexler, J. C., E. E. Gaiser, J. S. Kominoski, and J. Sanchez. 2015. The role of periphyton mats in consumer community structure and function in calcareous wetlands: Lessons from the Everglades. Pages 155-179 In: *Microbiology of the Everglades Ecosystem*. J. A. Entry, A. D. Gottlieb, K. Jayachandran and A. Ogram (editors). Science Publishers, CRC Press.

USEPA. 1993. R-EMAP: Regional Environmental Monitoring and Assessment Program. EPA/625/R-93/012. September 1993. USEPA Office of Research and Development. Washington, D. C. 96 pages.

USEPA. 1997. Mercury study report to Congress. Volume VI: an ecological assessment for anthropogenic mercury emissions in the United States. USEPA Office of Air Quality Planning & Standards and Office of Research and Development. EPA-452/R-97-008.

USEPA. 2014a. Everglades Ecosystem Assessment Phase IV. Miami, Florida. September 23-29, 2013. SESD Project Identification Number: 13-0513. USEPA Region 4 Science and Ecosystem Support Division. Athens, Georgia. 22 pages.

USEPA. 2014b. Everglades ecosystem assessment phase IV quality assurance project plan. USEPA Region 4 Science and Ecosystem Support Division. Athens, Georgia. 135 pages.

Welch, R. and M. Madden. 2000. Aerial photo vegetation assessment in the Everglades ecosystem. Final report. Submitted to U. S. Department of Interior, October 19, 2000. Center for Remote Sensing and Mapping Sciences, Department of Geography, University of Georgia. Athens, Georgia. 285 pages.

Yamashita, Youhei, Leonard J. Scinto, Nagamitsu Maie and Rudolf Jaffé. 2010. Dissolved Organic Matter Characteristics Across a Subtropical Wetland's Landscape: Application of Optical Properties in the Assessment of Environmental Dynamics. *Ecosystems* 13:1006-1019.