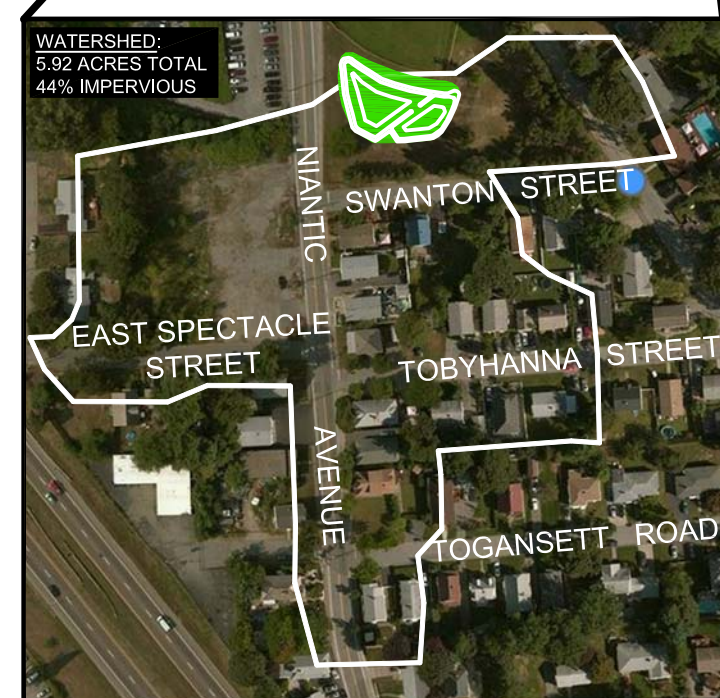


SITE LOCATION



WATERSHED

STORMWATER FLOW PATH

- STEP 1:** A DIVERSION WEIR IS CONSTRUCTED IN THE EXISTING CATCH BASIN TO DIVERT SMALL STORMS INTO THE NEW INFILTRATION BASIN.
- STEP 2:** LARGER STORMS FLOW OVER THE WEIR INTO THE EXISTING SYSTEM.
- STEP 3:** STORMWATER FLOWS INTO THE SEDIMENT FOREBAY FOR TREATMENT. SEDIMENT SETTLES OUT INTO ONE LOCATION, MAKING MAINTENANCE EASIER.
- STEP 4:** STORMWATER OVERFLOWS INTO THE INFILTRATION BASIN WHERE IT INFILTRATES INTO THE GROUND.
- STEP 5:** PLANTINGS ABSORB STORMWATER, REMOVING NUTRIENTS AND PROVIDING ADDITIONAL TREATMENT.
- STEP 6:** IF NEEDED, EXCESS STORMWATER WILL OVERFLOW THE BASIN VIA A NEW OUTLET STRUCTURE BACK INTO THE DRAINAGE SYSTEM.

WV WaterVision, LLC
481 GREAT ROAD, SUITE 3
ACTON, MA 01720

CEI COMPREHENSIVE ENVIRONMENTAL INCORPORATED
21 DEPOT STREET
MERRIMACK, NH 03054

EPA GREEN INFRASTRUCTURE
City of Providence Education and Outreach Project - April 2014
MASHAPAUG POND STORMWATER BMP - VEGETATED INFILTRATION BASIN
Niantic Avenue & Swanton Street