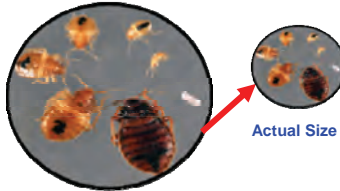


TRAVELERS

Beware of Bed Bugs!



Bed Bug Identification

- ◆ Eggs are tiny, white, and glued to surfaces.
- ◆ Nymphs are light colored, from 1/16".
- ◆ Adults are rusty red, apple seed sized, 1/4 to 3/8".
- ◆ Six legs, oval, flattened from top to bottom.
- ◆ They do not jump or fly, but are good runners and hitchhikers.
- ◆ They tend to congregate together.

Signs of Bed Bugs

- ◆ Small black droppings, blood stains, or shed skins on the bottom bed sheet.
- ◆ Red, itchy rash from bites.



For information on bed bugs
and Integrated Pest
Management (IPM) go to:
<http://www.epa.gov/bedbugs>

Check for Bed Bugs Everywhere You Stay

Avoid Traveler Anxiety. Be Prepared.

- ◆ Leave luggage in the car or room bath tub.
- ◆ Inspect back of headboard, mattress seams, box spring, bed frame and upholstered furniture with flashlight and magnifier.
- ◆ Inspect luggage racks prior to use.
- ◆ Always Keep bags closed and zipped.
- ◆ When packing or unpacking, never lay luggage, backpacks or clothes on bed or on the floor.
- ◆ Do not store clothes in dresser.
- ◆ Inspect cracks and crevices around bed stand.
- ◆ If you spot a bed bug tell hotel staff immediately.



Don't Take Bed Bugs Home....

- ◆ Transport all items in sealed plastic bags until able to wash or treat.
- ◆ Unpack clothes directly into a washing machine.
- ◆ Wash and dry all clothing at hottest setting.